

LOC/DME I-MCE 109.3 Chan 30	APP CRS 123°	Rwy Ldg TDZE Apt Elev	5914 155 155
--	------------------------	-----------------------------	---

LOC BC RWY 12

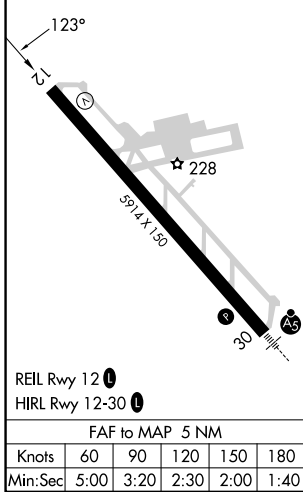
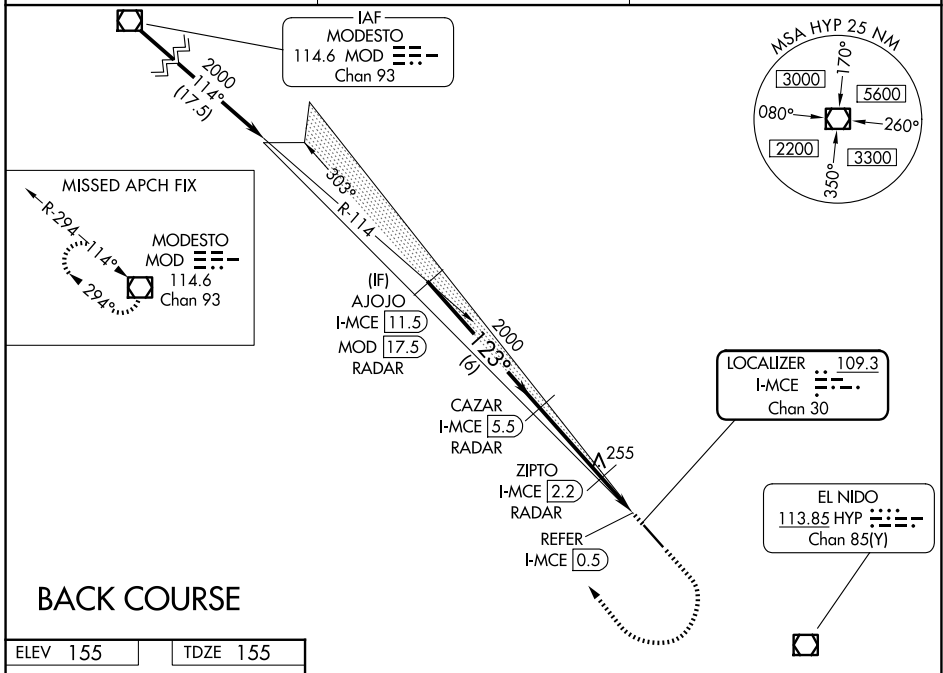
MERCED YOSEMITE RGNL (MCE)

DME or RADAR required.

⚠ Rwy 12 helicopter visibility reduction below 3/4 SM NA.
⚠ NA Circling NA northeast of Rwy 12-30.

MISSED APPROACH: Climb to 1000 then climbing right turn to 3000 direct MOD VOR/DME and hold.

ASOS 132.175	NORCAL APP CON 120.95 269.45	UNICOM 122.7 (CTAF) 0
------------------------	--	---------------------------------



ELEV 155	TDZE 155				
AJOJO I-MCE [11.5] RADAR	CAZAR I-MCE [5.5] RADAR	ZIPTO I-MCE [2.2] RADAR	I-MCE [0.9] REFER I-MCE [0.5]	1000	3000
2000	2000	640			
Disregard glide slope indications.					
-6 NM		-3.3 NM	-1.3 NM	0.4 NM	0.6 NM
CATEGORY	A	B	C	D	
S-12	640-1	485 (500-1)	640-1 3/8	485 (500-1 3/8)	
CIRCLING	640-1	485 (500-1)	640-1 1/2	720-2	565 (600-2)
ZIPTO FIX MINIMUMS					
S-12	520-1	NA			
	365 (400-1)				
CIRCLING	560-1	620-1	620-1 1/2	720-2	
	405 (500-1)	465 (500-1)	465 (500-1 1/2)	565 (600-2)	

SW-2, 16 APR 2026 to 14 MAY 2026

SW-2, 16 APR 2026 to 14 MAY 2026