

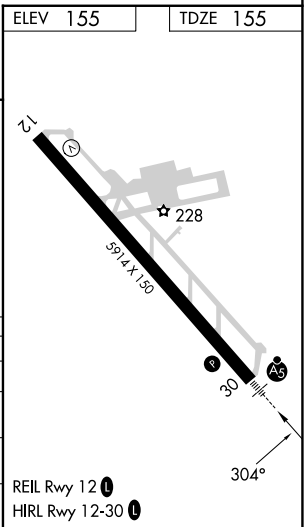
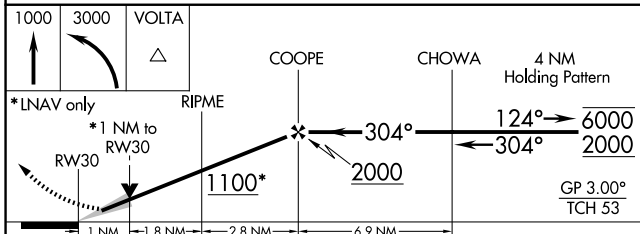
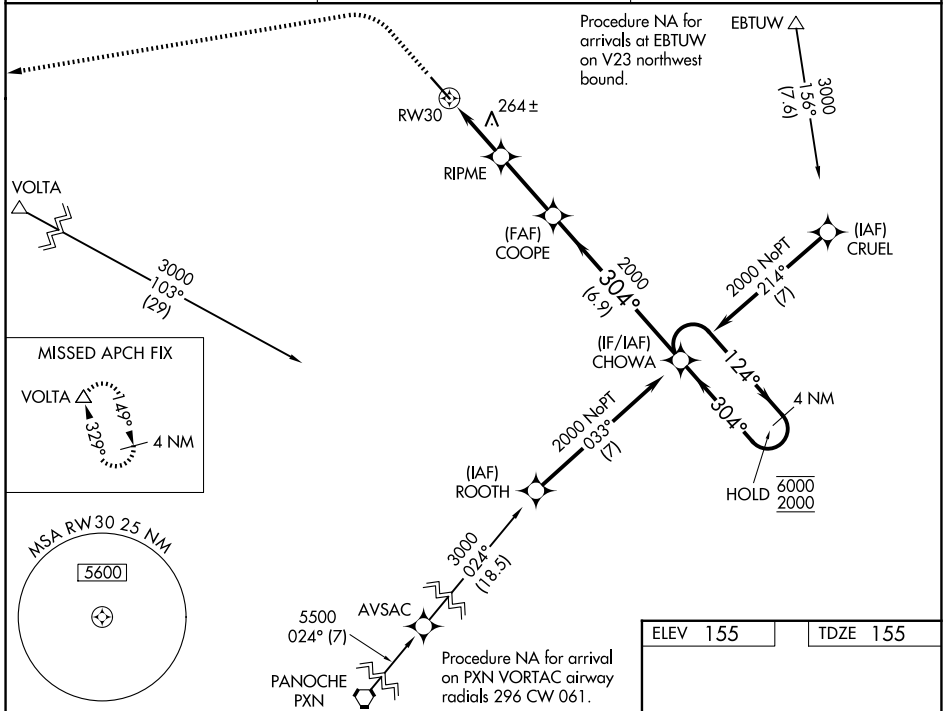
WAAS CH 93709 W30A	APP CRS 304°	Rwy Ldg TDZE 155 Apt Elev 155
--	------------------------	---

RNAV (GPS) RWY 30

MERCED YOSEMITE RGNL (MCE)

RNP APCH.	MALSR	MISSED APPROACH: Climb to 1000 then climbing left turn to 3000 direct VOLTA and hold.
<p>▼ For uncompensated Baro-VNAV systems, LNAV/VNAV NA below -3°C or above 54°C. For inoperative ALS, increase LNAV Cats C/D visibility to 1 3/8 SM. Circling NA northeast of Rwy 12-30.</p>		

ASOS 132.175	NORCAL APP CON 120.95 269.45	UNICOM 122.7 (CTAF) 0
------------------------	--	---------------------------------



CATEGORY	A	B	C	D
LPV DA		355-1/2	200 (200-1/2)	
LNAV/VNAV DA		544-5/8	389 (400-5/8)	
LNAV MDA	520-1/2 365 (400-1/2)		520-5/8 365 (400-5/8)	
CIRCLING	560-1 405 (500-1)	620-1 465 (500-1)	620-1 1/2 465 (500-1 1/2)	720-2 565 (600-2)

SW-2, 16 APR 2026 to 14 MAY 2026

SW-2, 16 APR 2026 to 14 MAY 2026