

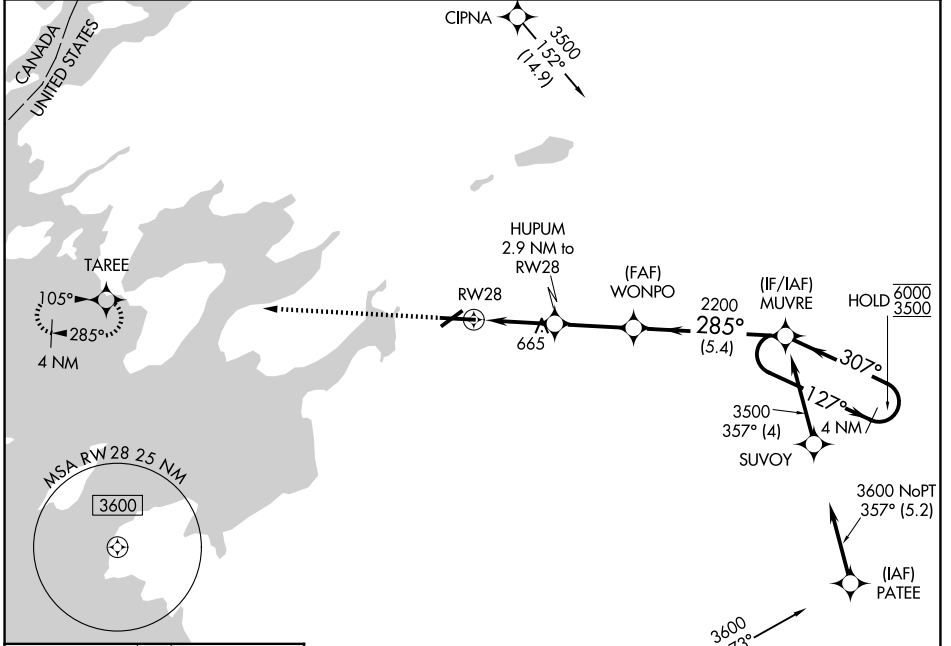
WAAS CH 82322 W28A	APP CRS 285°	Rwy Ldg TDZE Apt Elev	7001 331 331
--	------------------------	-----------------------------	---

RNAV (GPS) RWY 28

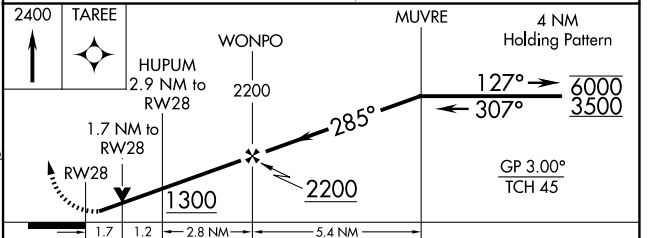
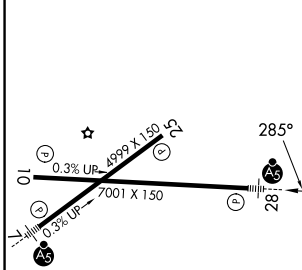
WATERTOWN INTL (ART)

RNP APCH - GPS.				MALSR MISSED APPROACH: Climb to 2400 direct TAREE and hold.	
Rwy 28 helicopter visibility reduction below 3/4 SM NA. For uncompensated Baro-VNAV systems, LNAV/VNAV NA below -20°C or above 54°C. For inop ALS, increase LNAV Cats A/B visibility to 1 SM.					

ASOS 132.325	KGTB ATIS 119.525	WHEELER-SACK APP CON 124.875 307.125	CLNC DEL 120.8	UNICOM 123.0 (CTAF)
------------------------	-----------------------------	--	--------------------------	-------------------------------



ELEV 331	D	TDZE 331
----------	----------	----------



	A	B	C	D
CATEGORY	A	B	C	D
LPV DA		531-1/2	200 (200-1/2)	
LNAV/VNAV DA		852-1	521 (600-1)	
LNAV MDA	920-3/4	589 (600-3/4)	920-1/4	589 (600-1/4)
CIRCLING	920-1 589 (600-1)	960-1 629 (700-1)	980-1 3/4 649 (700-1 3/4)	1080-2 1/2 749 (800-2 1/2)

REIL Rwy 25
HIRL Rwy 7-25
MIRL Rwy 10-28

NE-2, 16 APR 2026 to 14 MAY 2026

NE-2, 16 APR 2026 to 14 MAY 2026