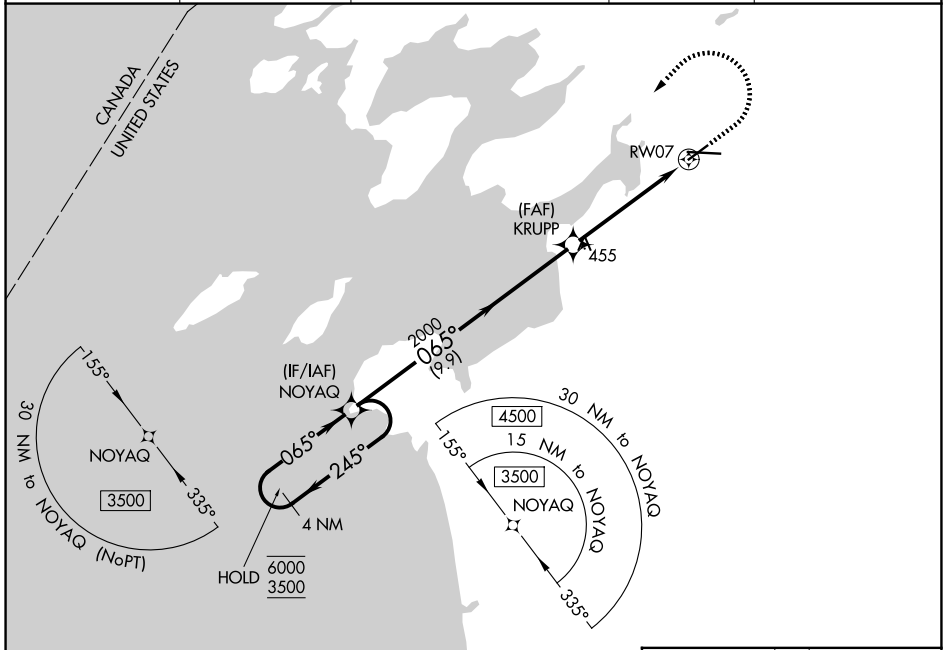


WAAS CH 82510 W07A	APP CRS 065°	Rwy Ldg 4784 TDZE 319 Apt Elev 331
--	------------------------	---

RNAV (GPS) RWY 7

WATERTOWN INTL (ART)

RNP APCH - GPS.		MALSR	MISSED APPROACH: Climb to 900 then climbing left turn to 3500 direct NOYAQ and hold.	
<p>▽ For uncompensated Baro-VNAV systems, LNAV/VNAV NA below -20°C or above 54°C. For inop ALS, increase LNAV/VNAV visibilities all Cats to 1½ SM and LNAV Cat C/D visibilities to 1½ SM.</p>				
ASOS 132.325	KGTB ATIS 119.525	WHEELER-SACK APP CON 124.875 307.125	CLNC DEL 120.8	UNICOM 123.0 (CTAF)



NE-2, 16 APR 2026 to 14 MAY 2026

NE-2, 16 APR 2026 to 14 MAY 2026

4 NM Holding Pattern		ELEV 331	TDZE 319
		900	3500
CATEGORY	A	B	C
LPV DA	519-½		200 (200-½)
LNAV/VNAV DA	800-1		481 (500-1)
LNAV MDA	800-½	481 (500-½)	800-1 481 (500-1)
CIRCLING	960-1	629 (700-1)	980-¾ 1080-2½ 649 (700-¾) 749 (800-2½)
REIL Rwy 25		HIRL Rwy 7-25	
MIRL Rwy 10-28			