

WAAS CH <b>40100</b> <b>W18A</b>	APP CRS <b>180°</b>	Rwy Ldg TDZE Apt Elev	<b>6501</b> <b>1213</b> <b>1213</b>
----------------------------------------	------------------------	-----------------------------	-------------------------------------------

# RNAV (GPS) RWY 18

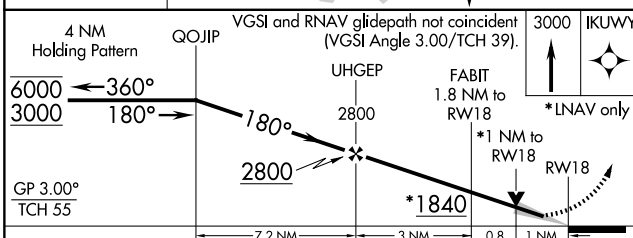
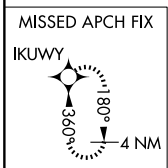
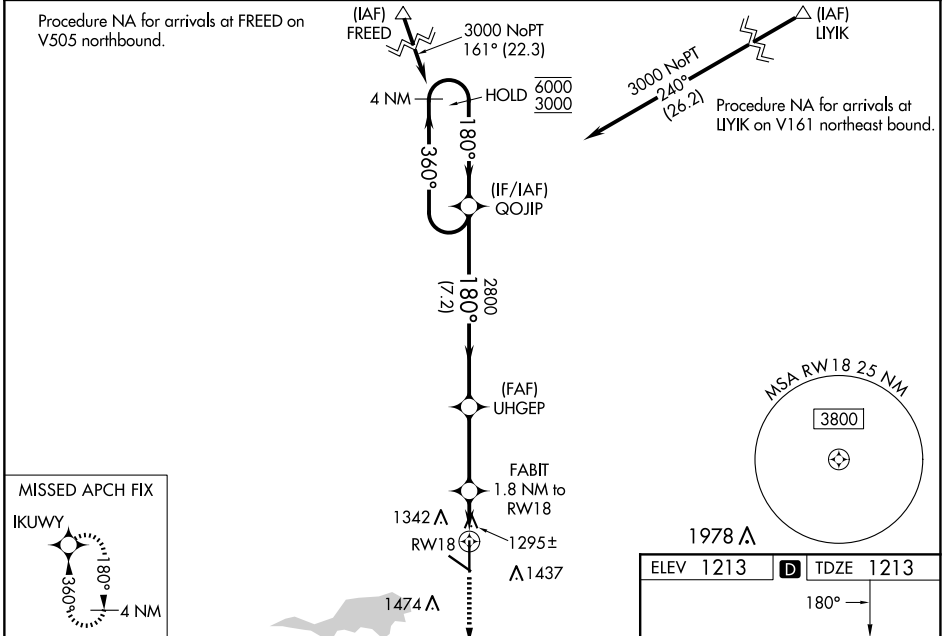
MASON CITY MUNI (MCW)

RNP APCH-GPS.

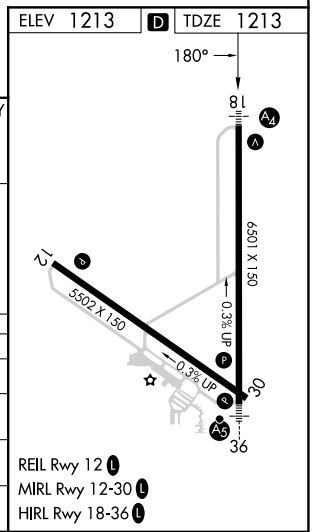
**⚠** Baro-VNAV and VDP NA when using Charles City altimeter setting. For uncompensated Baro-VNAV systems, LNAV/VNAV NA below -17°C or above 54°C. Inop table does not apply to LPV and LNAV/VNAV. When local altimeter setting not received, use Charles City altimeter setting and increase LPV DA to 1500 feet, LNAV/VNAV DA to 1550; increase all MDA 100 feet and LNAV Cats C and D visibility ¼ SM and Circling Cat C ¼ SM. For inop ALS when using Charles City altimeter setting, increase LPV all Cats visibility to ½ SM; LNAV Cats C/D visibility to 1 ½ SM.

**MALS**  
 MISSED APPROACH: Climb to 3000 direct IKUWY and hold.

ASOS <b>120.3</b>	MINNEAPOLIS CENTER <b>127.3 257.675</b>	UNICOM <b>123.0 (CTAF) 0</b>
----------------------	--------------------------------------------	---------------------------------



CATEGORY	A	B	C	D
LPV DA		1413-¾	200 (200-¾)	
LNAV/VNAV DA		1463-¾	250 (300-¾)	
LNAV MDA		1560-¾	347 (400-¾)	
CIRCLING	1680-1 467 (500-1)	1760-1 547 (600-1)	1780-1½ 567 (600-1½)	1780-2 567 (600-2)



NC-3, 16 APR 2026 to 14 MAY 2026

NC-3, 16 APR 2026 to 14 MAY 2026