

WAAS CH 97344 W13A	APP CRS 127°	Rwy Ldg TDZE Apt Elev	7510 5723 5759
--	------------------------	-----------------------------	---

RNAV (GPS) RWY 13

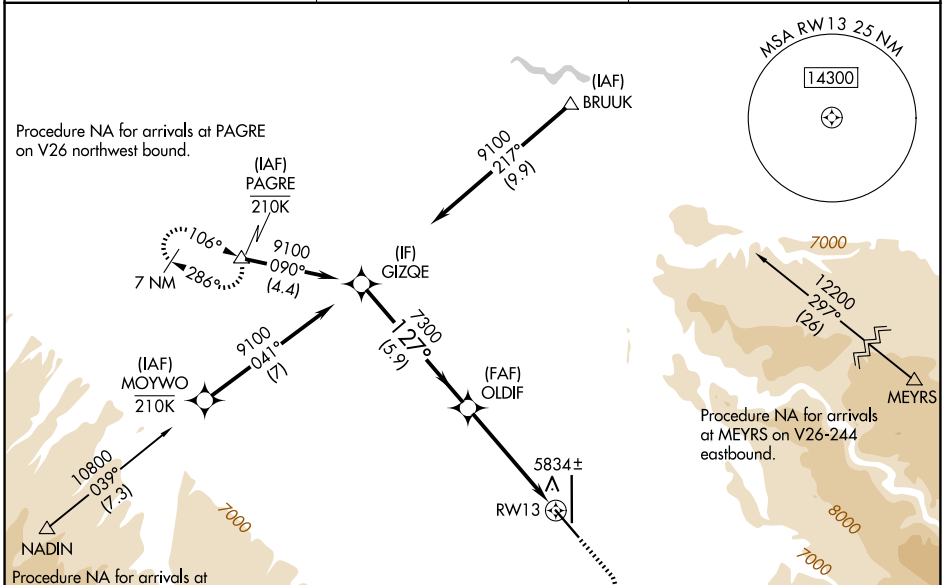
MONTROSE RGNL (MTJ)

RNP APCH - GPS.

⚠ Rwy 13 helicopter visibility reduction below 1 SM NA. Circling NA east of Rwy 17 and northeast of Rwy 31. Circling Rwy 31 NA at night. For uncompensated Baro-VNAV systems, LNAV/VNAV NA below -19°C or above 54°C. Straight-in/Circling Rwy 13 at night, operational VGSI required, remain on or above VGSI glidepath until threshold.

⚠ MISSED APPROACH: (Do not exceed 200K until PAGRE) Climb to 6300 (6440 when using AJZ altimeter setting) then climbing right turn to 11000 direct PAGRE and hold, continue climb-in-hold to 11000.

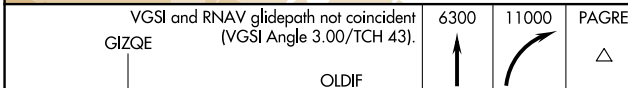
ASOS 135.225	DENVER CENTER 127.1 343.65	UNICOM 122.8 (CTAF) 0
------------------------	--------------------------------------	---------------------------------



Procedure NA for arrivals at PAGRE on V26 northwest bound.

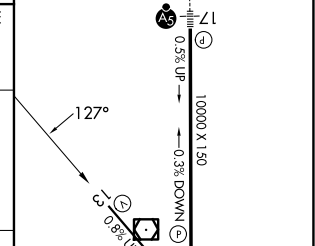
Procedure NA for arrivals at MEYRS on V26-244 eastbound.

Procedure NA for arrivals at NADIN on V244 westbound.



GP 3.00° TCH 55	9100	7300	7300	6300	11000	PAGRE
	5.9 NM	4.9 NM				

ELEV 5759	D TDZE 5723
-----------	--------------------



CATEGORY	A	B	C	D
LPV DA	5973-1 250 (300-1)			
LNAV/VNAV DA	6101-1 378 (400-1)			
LNAV MDA	6160-1 437 (500-1)	6160-1¼ 437 (500-1¼)		
CIRCLING	6280-1 521 (600-1)	6320-1 561 (600-1)	6420-1¾ 661 (700-1¾)	6800-3 1041 (1100-3)

REIL Rwy 31 and 35 **0**

HIRL Rwy 13-31 and 17-35 **0**

SW-1, 16 APR 2026 to 14 MAY 2026

SW-1, 16 APR 2026 to 14 MAY 2026