

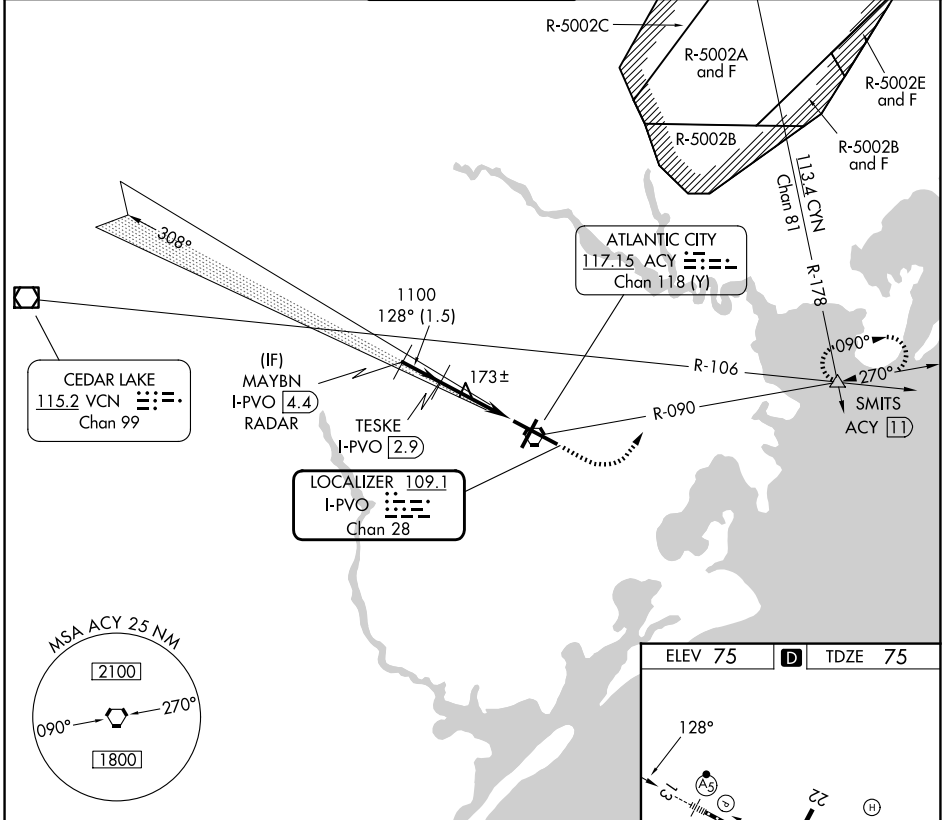
LOC/DME I-PVO 109.1 Chan 28	APP CRS 128°	Rwy Ldg 10001 TDZE 75 Apt Elev 75
---	------------------------	--

COPTER ILS or LOC/DME RWY 13

ATLANTIC CITY INTL (ACY)

RADAR required. ▼ NA		MALSR 	MISSED APPROACH: Climb to 600 then climbing left turn to 2000 on ACY VORTAC R-090 to SMITS INT/ACY 11 DME and hold.
-------------------------	--	-----------	---

ATIS 125.725 316.15	ATLANTIC CITY APP CON 124.6 327.125	ATLANTIC CITY TOWER 120.3 239.0	GND CON 121.9 284.6	CLNC DEL 127.85 353.775
-------------------------------	---	---	-------------------------------	-----------------------------------



NE-2, 16 APR 2026 to 14 MAY 2026

NE-2, 16 APR 2026 to 14 MAY 2026

Use I-PVO DME when on the localizer course.	600	2000	ACY R-090	SMITS		
MAYBN I-PVO (4.4) RADAR	TESKE I-PVO (2.9)	VGS1 and ILS glidepath not coincident (VGS1 Angle 3.00/TCH 71).				
GS 3.00° HCH 58	1600	1100	I-PVO (0.8)	DME Antenna		
	1.5 NM	2.1 NM	0.9			
CATEGORY	COPTER					
H-ILS 13	275/12	200 (200-¼)				
H-LOC 13	440/24	365 (400-½)				
			FAF to MAP 3 NM			
	Knots	45	60	75	90	105
	Min:Sec	4:00	3:00	2:24	2:00	1:43