

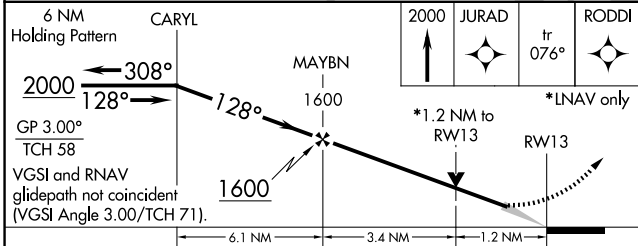
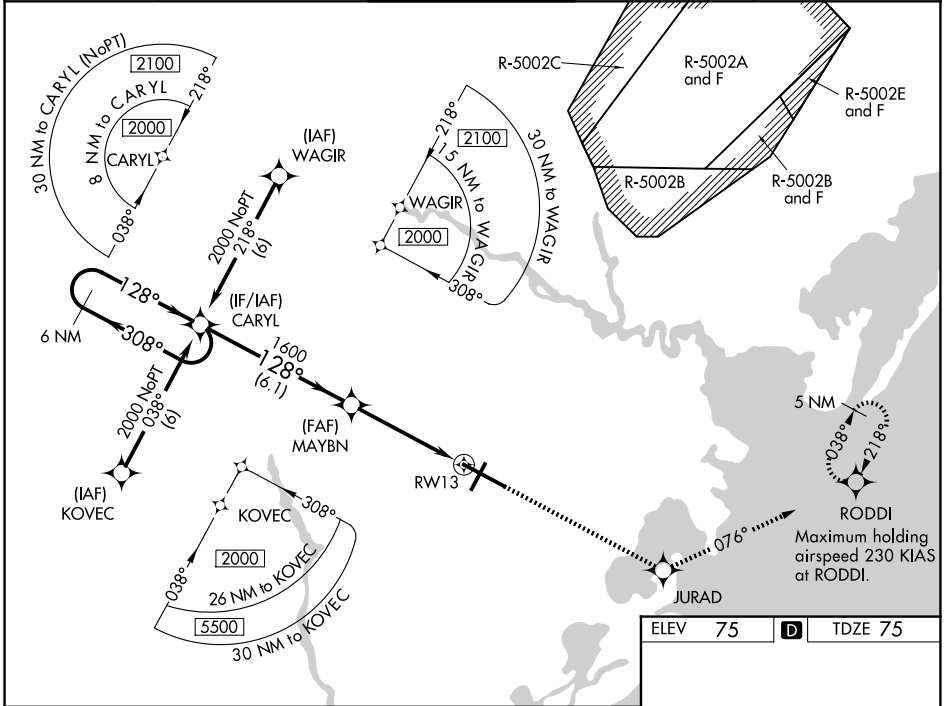
WAAS CH 45513 W13A	APP CRS 128°	Rwy Ldg 10001 TDZE 75 Apt Elev 75
--	------------------------	--

RNAV (GPS) Y RWY 13

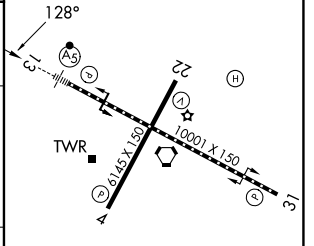
ATLANTIC CITY INTL (ACY)

RNP APCH - GPS	MALSR 	MISSED APPROACH: Climb to 2000 direct JURAD and on track 076° to RODDI and hold.
<p>▼ For inoperative MALSR, increase LPV Cat E visibility to RVR 4000, LNAV/VNAV Cat E visibility to 1½, and LNAV Cat D visibility to RVR 6000, Cat E visibility to 1½. For uncompensated Baro-VNAV systems, LNAV/VNAV NA below -15°C (5°F) or above 48°C (118°F).</p>		

ATIS 125.725 316.15	ATLANTIC CITY APP CON 124.6 327.125	ATLANTIC CITY TOWER 120.3 239.0	GND CON 121.9 284.6	CLNC DEL 127.85 353.775
-------------------------------	---	---	-------------------------------	-----------------------------------



ELEV 75	D	TDZE 75
---------	----------	---------



CATEGORY	A	B	C	D	E
LPV DA	275/18 200 (200-½)				
LNAV/VNAV DA	475/40 400 (400-¾)				
LNAV MDA	520/24 445 (500-½)	520/40 445 (500-¾)		520/50	445 (500-1)
CIRCLING	540-1 465 (500-1)	600-1 525 (600-1)	620-1½ 545 (600-1½)	640-2 565 (600-2)	760-2½ 685 (700-2½)

TDZ/CL Rwy 13
HIRL Rwy 4-22 and 13-31
REIL Rwy 31

NE-2, 16 APR 2026 to 14 MAY 2026

NE-2, 16 APR 2026 to 14 MAY 2026