

WAAS CH 63002 W22A	APP CRS 219°	Rwy Ldg 6153 TDZE 17 Apt Elev 18
--	------------------------	---

RNAV (GPS) RWY 22

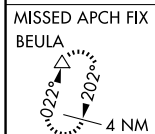
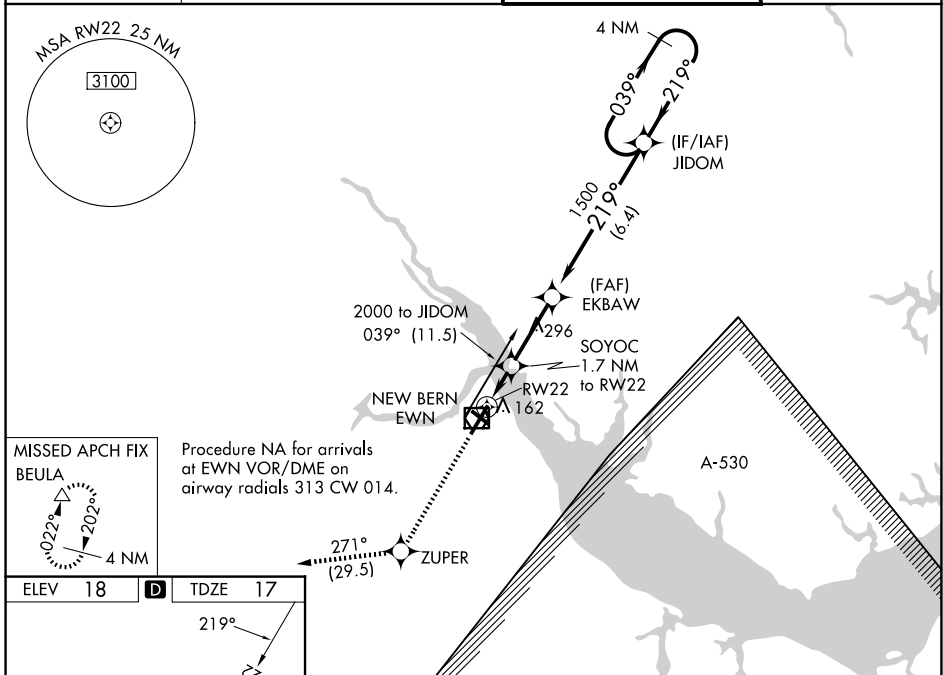
COASTAL CAROLINA RGNL (E'WN)

RNP APCH.

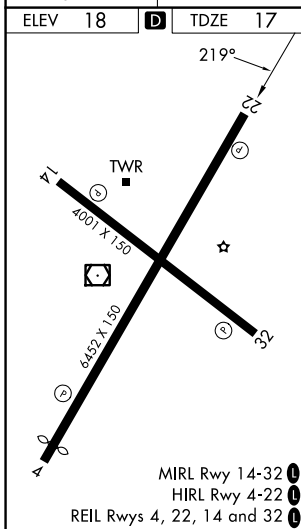
▼ Rwy 14, 32 helicopter visibility reduction below 1 SM NA. Rwy 22 helicopter visibility reduction below ¾ SM NA. Circling Rwy 14, 32 NA at night. Baro-VNAV NA when using Cherry Point altimeter setting. For uncompensated Baro-VNAV systems, LNAV/VNAV NA below -15°C (5°F) or above 54°C (130°F). When local altimeter setting not received, use Cherry Point altimeter setting; increase all DA 32 feet and all MDA 40 feet. Increase LPV and LNAV/VNAV visibility ½ SM, and Circling Cat C/D visibility ¼ SM.

MISSED APPROACH:
Climb to 3000 direct ZUPER and on track 271° to BEULA and hold.

ASOS 118.525	CHERRY POINT APP CON 119.35 377.175	NEW BERN TOWER ★ 124.25 (CTAF) 0	GND CON 121.7
------------------------	---	--	-------------------------



Procedure NA for arrivals at EWN VOR/DME on airway radials 313 CW 014.



ELEV 18	D	TDZE 17				
3000	ZUPER	tr 271°	BEULA	4 NM Holding Pattern		
*LNAV only.		SOYOC 1.7 NM to RW22	EKBAW 1500	JIDOM		
RW22		*580	1500	039° → 2000		
		1.7 NM	2.9 NM	← 219° GP 3.00° TCH 31		
CATEGORY	A	B	C	D		
LPV DA	269-7/8		252 (300-7/8)			
LNAV/VNAV DA	376-1 1/4		359 (400-1 1/4)			
LNAV MDA	480-1	463 (500-1)	480-1 3/8	463 (500-1 3/8)		
CIRCLING	480-1 462 (500-1)	520-1 502 (600-1)	600-1 1/2 582 (600-1 1/2)	860-2 3/4 842 (900-2 3/4)		