

WAAS CH 86999	APP CRS 016°	Rwy Idg TDZE Apt Elev	5600 7 13
-------------------------	------------------------	-----------------------------	--------------------------------------

RNAV (GPS) RWY 2

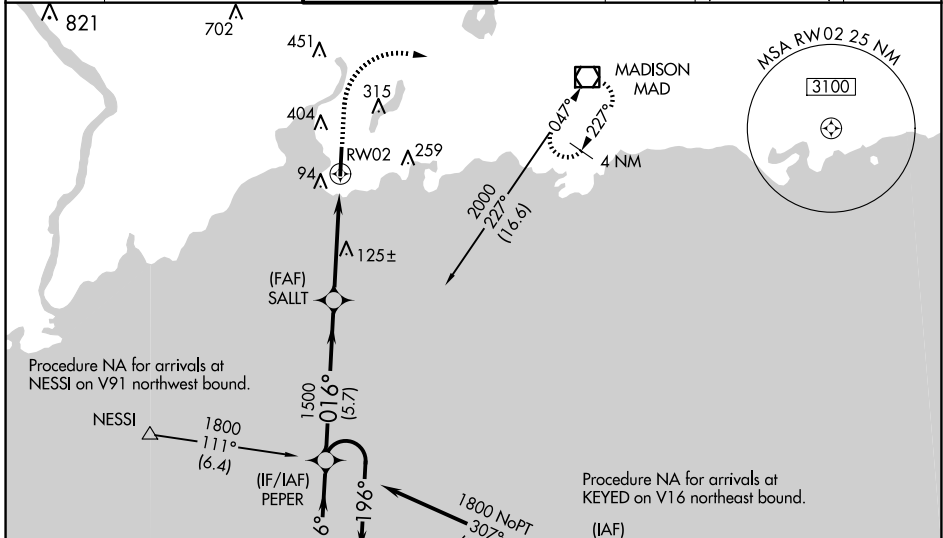
TWEED/NEW HAVEN (HVN)

RNP APCH - GPS.

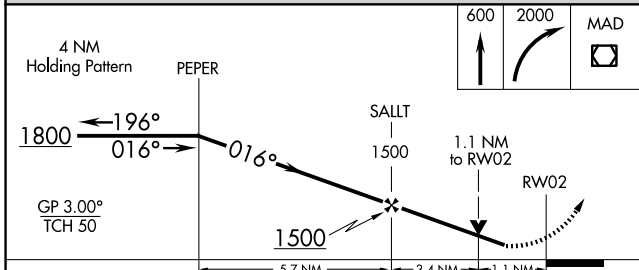
⚠ When local altimeter setting not received, use Long Island Mac Arthur altimeter setting; increase LPV DA to 375 feet; increase LNAV/VNAV DA to 446 feet and all visibilities to RVR 5000; increase all MDAs 100 feet and LNAV visibility Cat C/D to RVR 6000 and Circling visibility Cat C/D ¼ SM. For inop ALS when using Long Island Mac Arthur altimeter setting, increase LPV visibility all Cats to RVR 5500. For uncompensated Baro-VNAV systems, LNAV/VNAV NA below -1.4°C or above 54°C. Night landing: Rwy 14, 32 NA. Rwy 2 helicopter visibility reduction below RVR 4000 NA. Baro-VNAV and VDP NA when using Long Island Mac Arthur altimeter setting. For inop ALS, increase LPV all Cats visibility to RVR 4500.

MALSF MISSED APPROACH: Climb to 600 then climbing right turn to 2000 direct MAD VOR/DME and hold.

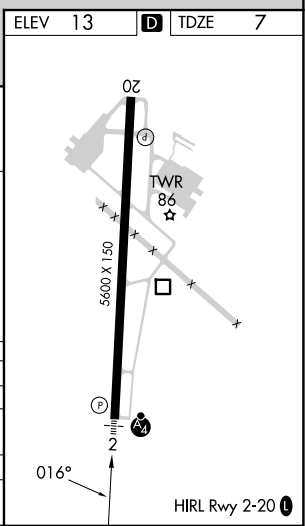
ATIS 133.65	NEW YORK APP CON 124.075 343.65	NEW HAVEN TOWER ★ 124.8 (CTAF)	GND CON 121.7	CLNC DEL 121.7	CLNC DEL 121.7 (When twr closed)	UNICOM 122.95
-----------------------	---	--	-------------------------	--------------------------	---	-------------------------



ELEV	13	TDZE	7
------	----	------	---



CATEGORY	A	B	C	D
LPV DA		295/40	287 (300-¾)	
LNAV/VNAV DA		365/40	358 (400-¾)	
LNAV MDA	400/40	393 (400-¾)	400/45	393 (400-¾)
CIRCLING	720-1	707 (800-1)	780-2¼ 767 (800-2¼)	880-2¾ 867 (900-2¾)



NE-1, 16 APR 2026 to 14 MAY 2026

NE-1, 16 APR 2026 to 14 MAY 2026