

CAMARILLO SIX DEPARTURE

SW-3, 16 APR 2026 to 14 MAY 2026

TAKEOFF MINIMUMS

- Rwy 7: 2000-5 or Standard with minimum climb of 320' per NM to 4100.
- Rwy 25: 2100-5 or Standard with a minimum climb of 300' per NM to 4100.

NOTE: Aircraft proceeding on FILLMORE TRANSITION- If not at MCA/MEA prior to reaching FIM VORTAC, continue climbing in depicted holding pattern to MCA or assigned altitude.

NOTE: RADAR required.

TOP ALTITUDE:
8000

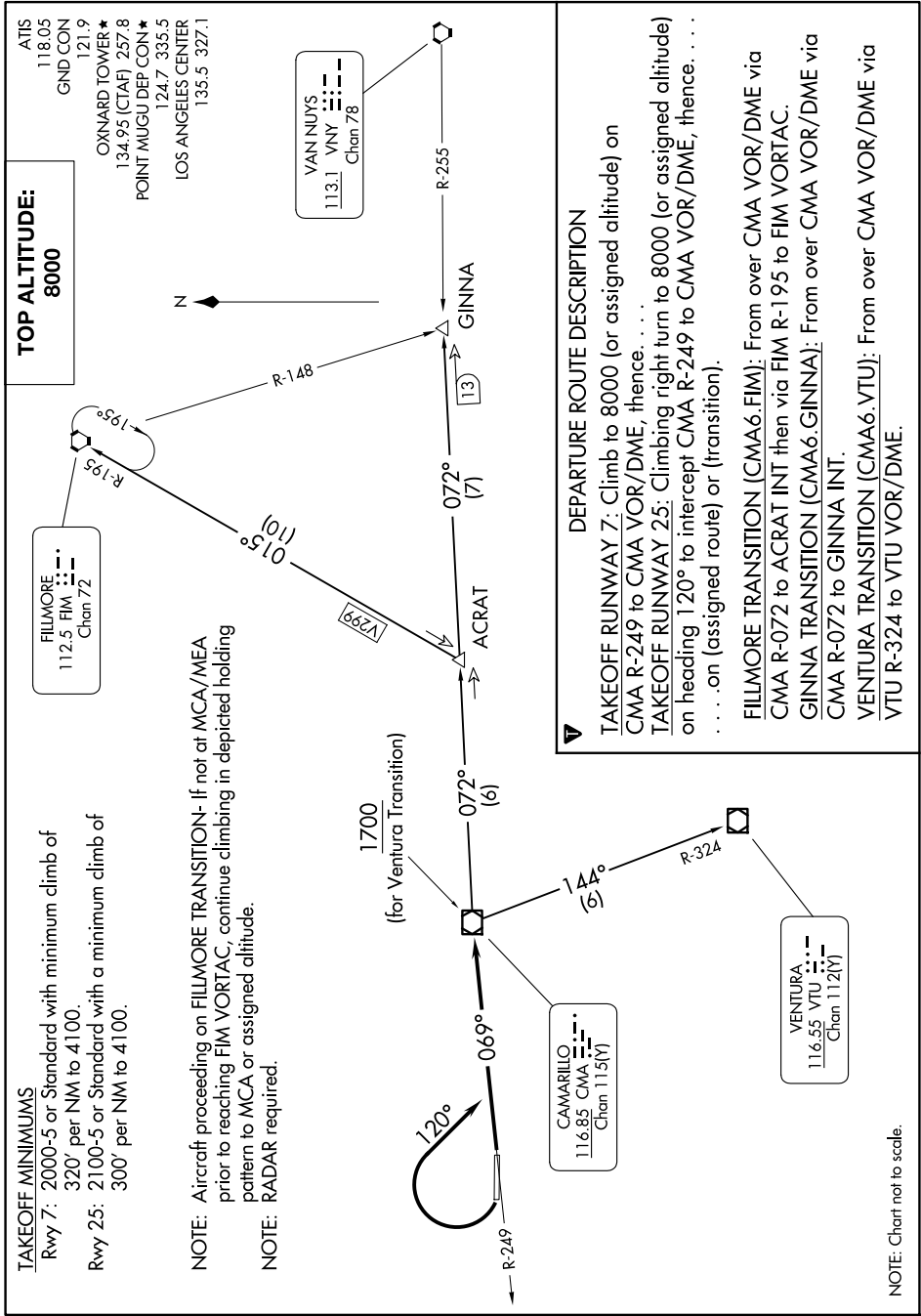
ATIS 118.05
GND CON 121.9
OXNARD TOWER ★ 134.95 (CTAF) 257.8
POINT MUGU DEP CON ★ 124.7 335.5
LOS ANGELES CENTER 135.5 327.1

VAN NUYS
113.1 VNY
Chan 78

FILLMORE
112.5 FIM
Chan 72

CAMARILLO
116.85 CMA
Chan 115(Y)

VENTURA
116.55 VTU
Chan 112(Y)



DEPARTURE ROUTE DESCRIPTION

- TAKEOFF RUNWAY 7:** Climb to 8000 (or assigned altitude) on CMA R-249 to CMA VOR/DME, thence. . . .
- TAKEOFF RUNWAY 25:** Climbing right turn to 8000 (or assigned altitude) on heading 120° to intercept CMA R-249 to CMA VOR/DME, thence. . . . on (assigned route) or (transition).
- FILLMORE TRANSITION (CMA6.FIM):** From over CMA VOR/DME via CMA R-072 to ACRAT INT then via FIM R-195 to FIM VORTAC.
- GINNA TRANSITION (CMA6.GINNA):** From over CMA VOR/DME via CMA R-072 to GINNA INT.
- VENTURA TRANSITION (CMA6.VTU):** From over CMA VOR/DME via VTU R-324 to VTU VOR/DME.

NOTE: Chart not to scale.

SW-3, 16 APR 2026 to 14 MAY 2026

CAMARILLO SIX DEPARTURE