

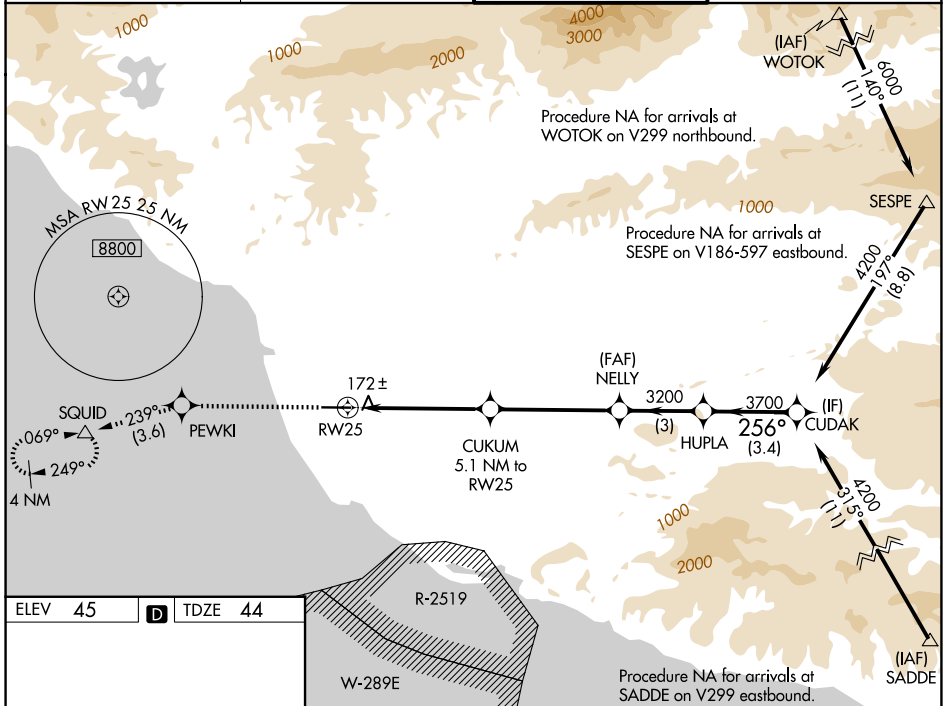
| | | |
|--|------------------------|---|
| WAAS CH 86299 W25A | APP CRS 256° | Rwy Ldg 5500 TDZE 44 Apt Elev 45 |
|--|------------------------|---|

RNAV (GPS) RWY 25

OXNARD (OXR)

| | | |
|--|-----------|--|
| RNP APCH - GPS. | MALSF | MISSED APPROACH: Climb to 2000 direct PEWKI and on track 239° to SQUID and hold. |
| <p>⚠ Inoperative table does not apply. Baro-VNAV NA when using Camarillo altimeter setting. For uncompensated Baro-VNAV systems, LNAV/VNAV NA below -1.5°C or above 43°C. When local altimeter setting not received, use Camarillo altimeter setting and increase LPV DA to 440 feet, LNAV/VNAV DA to 437 feet. Increase all MDAs 20 feet and Circling Cat C visibility ¼ SM.</p> | | |

| | | | |
|-----------------------|---|---|-------------------------|
| ATIS 118.05 | POINT MUGU APP CON* 124.7 335.5 | OXNARD TOWER* 134.95 (CTAF) 257.8 | GND CON 121.9 |
|-----------------------|---|---|-------------------------|



| | | | | | | |
|---------------|-------------------|----------------|--|--------|--|-----------------|
| ELEV 45 | D | TDZE 44 | | | | |
| 2000 | PEWKI | tr 239° | SQUID | NELLY | HUPLA | CUDAK |
| | | | | 3200 | 3700 | 4200 |
| | | 1.3 NM to RW25 | CUKUM 5.1 NM to RW25 | | | GP 3.00° TCH 58 |
| | | 1.3 NM | 3.8 NM | 4.6 NM | 3 NM | 3.4 NM |
| CATEGORY | A | | B | | C | D |
| LPV DA | 424-1 380 (400-1) | | | | | |
| LNAV/VNAV DA | 421-1 377 (400-1) | | | | | |
| LNAV MDA | 520-1 476 (500-1) | | 520-1 ³ / ₈ 476 (500-1 ³ / ₈) | | | |
| CIRCLING | 520-1 475 (500-1) | | 700-1 ³ / ₄ 655 (700-1 ³ / ₄) | | 760-2 ¹ / ₄ 715 (800-2 ¹ / ₄) | |
| REIL Rwy 7 | | | | | | |
| MIRL Rwy 7-25 | | | | | | |

SW-3, 16 APR 2026 to 14 MAY 2026

SW-3, 16 APR 2026 to 14 MAY 2026