

WAAS CH <b>72623</b> <b>W07A</b>	APP CRS <b>075°</b>	Rwy Ldg TDZE Apt Elev	<b>5954</b> <b>37</b> <b>45</b>
--	------------------------	-----------------------------	---------------------------------------

# RNAV (GPS) RWY 7

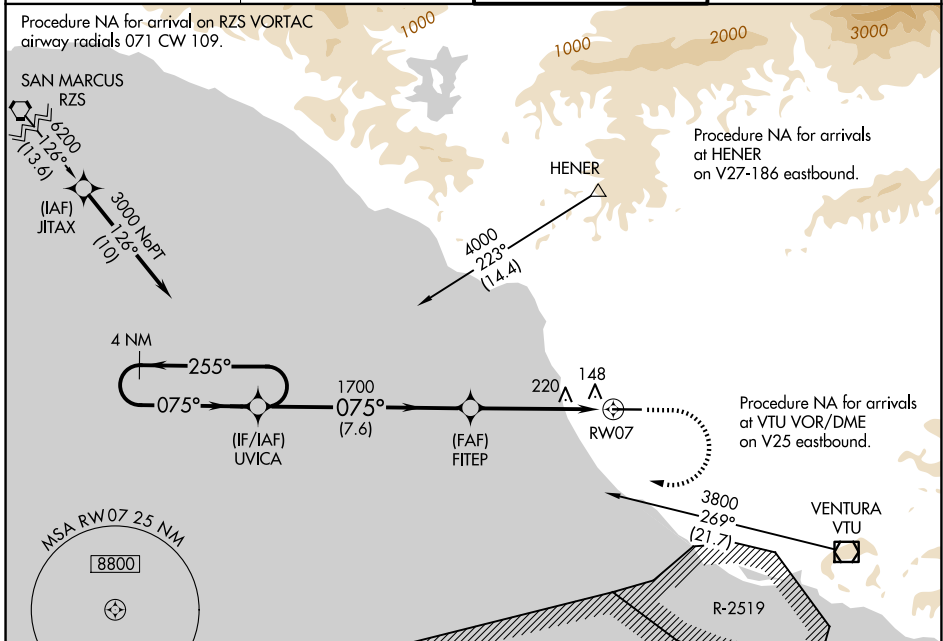
OXNARD (OXR)

RNP APCH-GPS.

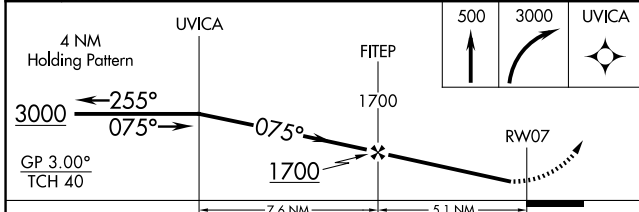
▼ Baro-VNAV NA when using Camarillo altimeter setting. For uncompensated Baro-VNAV systems, LNAV/VNAV NA below -15°C or above 43°C. When local altimeter setting not received, use Camarillo altimeter setting and increase LPV DA to 305 feet, increase LNAV/VNAV DA to 337 feet; increase all MDAs 20 feet and Circling Cat C visibility ¼ SM.

MISSED APPROACH: Climb to 500, then climbing right turn to 3000 direct UVICA and hold.

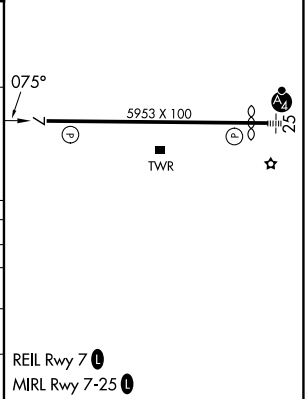
ATIS <b>118.05</b>	POINT MUGU APP CON* <b>124.7 335.5</b>	OXNARD TOWER* <b>134.95 (CTAF) 257.8</b>	GND CON <b>121.9</b>
-----------------------	---	---	-------------------------



ELEV	45	TDZE	37
------	----	------	----



CATEGORY	A	B	C	D
LPV DA		287-1	250 (300-1)	
LNAV/VNAV DA		319-1	282 (300-1)	
LNAV MDA	480-1 443 (500-1)		480-1 $\frac{3}{8}$ 443 (500-1 $\frac{3}{8}$ )	
CIRCLING	500-1 455 (500-1)	520-1 475 (500-1)	700-1 $\frac{3}{4}$ 655 (700-1 $\frac{3}{4}$ )	760-2 $\frac{1}{4}$ 715 (800-2 $\frac{1}{4}$ )



SW-3, 16 APR 2026 to 14 MAY 2026

SW-3, 16 APR 2026 to 14 MAY 2026