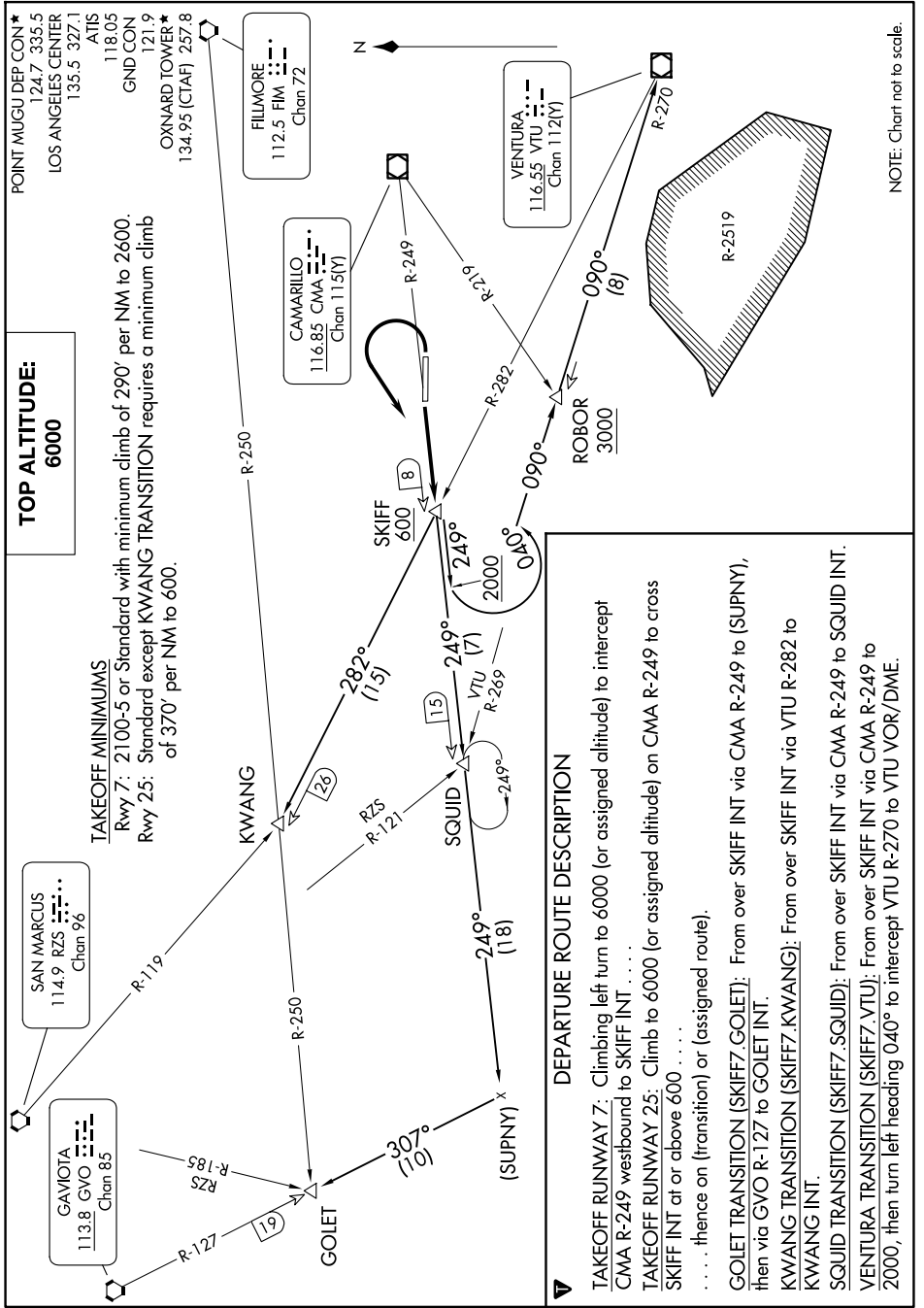


SKIFF SEVEN DEPARTURE

AL-674 (FAA)

OXNARD (OXR)
OXNARD, CALIFORNIA

SW-3, 16 APR 2026 to 14 MAY 2026



TOP ALTITUDE:
6000

TAKEOFF MINIMUMS

Rwy 7: 2100-5 or Standard with minimum climb of 290' per NM to 2600.
 Rwy 25: Standard except KWANG TRANSITION requires a minimum climb of 370' per NM to 600.

DEPARTURE ROUTE DESCRIPTION

TAKEOFF RUNWAY 7: Climbing left turn to 6000 (or assigned altitude) to intercept CMA R-249 westbound to SKIFF INT. . . .

TAKEOFF RUNWAY 25: Climb to 6000 (or assigned altitude) on CMA R-249 to cross SKIFF INT at or above 600

. thence on (transition) or (assigned route).

GOLEET TRANSITION (SKIFF7 GOLEET): From over SKIFF INT via CMA R-249 to (SUPNY), then via GVO R-127 to GOLEET INT.

KWANG TRANSITION (SKIFF7 KWANG): From over SKIFF INT via VTU R-282 to KWANG INT.

SQUID TRANSITION (SKIFF7 SQUID): From over SKIFF INT via CMA R-249 to SQUID INT.

VENTURA TRANSITION (SKIFF7 VTU): From over SKIFF INT via CMA R-249 to 2000, then turn left heading 040° to intercept VTU R-270 to VTU VOR/DME.

SKIFF SEVEN DEPARTURE

SW-3, 16 APR 2026 to 14 MAY 2026