

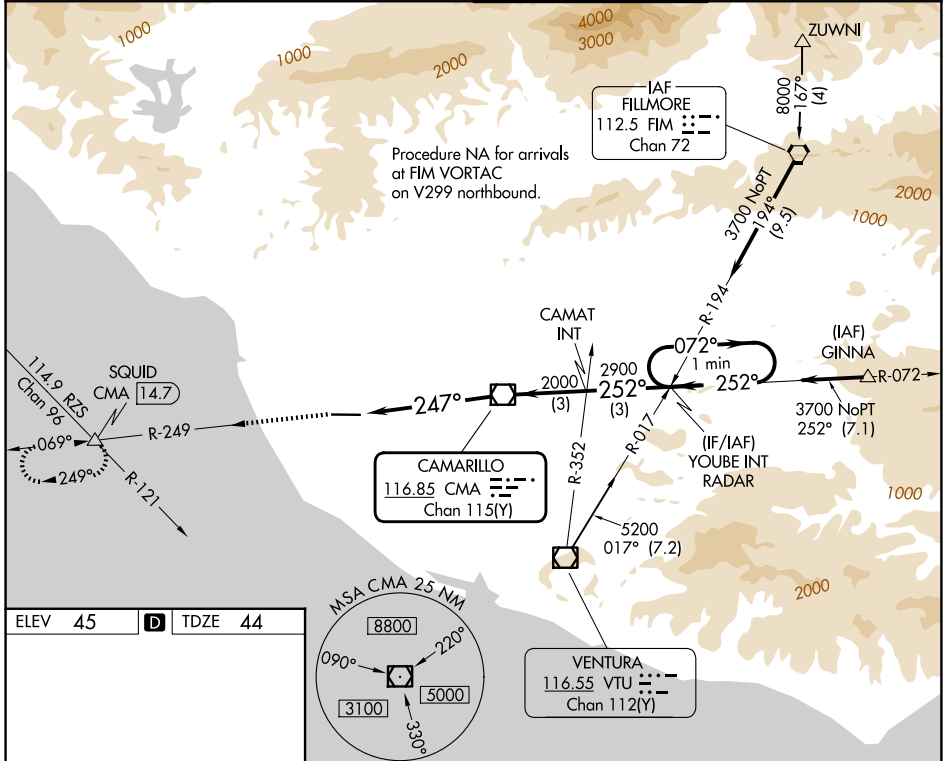
VOR/DME CMA <b>116.85</b> Chan <b>115(Y)</b>	APP CRS <b>247°</b>	Rwy Ldg <b>5500</b> TDZE <b>44</b> Apt Elev <b>45</b>
--	------------------------	---

# VOR RWY 25

OXNARD (OXR)

DME required.	MALSF	MISSED APPROACH: Climb to 2000 on CMA R-249 to SQUID INT/ 14.7 DME and hold.
<p>▼ For inop ALS, when using Camarillo altimeter setting, increase Cat C/D visibility to 1 3/4 SM. Rwy 25 helicopter visibility reduction below 3/4 SM NA.</p> <p>▲ When local altimeter setting not received, use CMA altimeter setting and increase all MDAs 20 feet, increase Circling Cat C visibility 1/4 SM.</p>		

ATIS <b>118.05</b>	POINT MUGU APP CON* <b>124.7 335.5</b>	OXNARD TOWER* <b>134.95 (CTAF) 257.8</b>	GND CON <b>121.9</b>
-----------------------	---	---	-------------------------



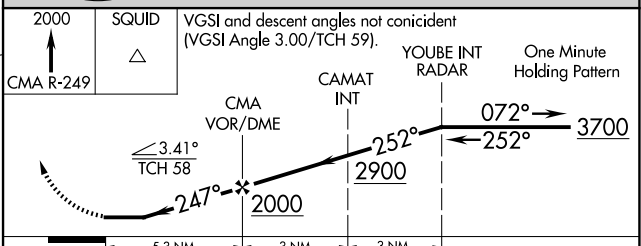
ELEV 45	<b>D</b>	TDZE 44
---------	----------	---------



REIL Rwy 7 **0**  
MIRL Rwy 7-25 **0**

FAF to MAP 5.3 NM

Knots	60	90	120	150	180
Min:Sec	5:18	3:32	2:39	2:07	1:46



CATEGORY	A	B	C	D
S-25	620-1	576 (600-1)	620-1 3/8	576 (600-1 1/8)
CIRCLING	620-1	575 (600-1)	700-1 3/4 655 (700-1 1/4)	760-2 1/4 715 (800-2 1/4)

SW-3, 16 APR 2026 to 14 MAY 2026

SW-3, 16 APR 2026 to 14 MAY 2026