

WAAS CH <b>77812</b> <b>W24A</b>	APP CRS <b>246°</b>	Rwy Ldg <b>5425</b> TDZE <b>43</b> Apt Elev <b>54</b>
--	------------------------	---

# RNAV (GPS) RWY 24

CAPE COD GATEWAY (HYA)

RNP APCH - GPS

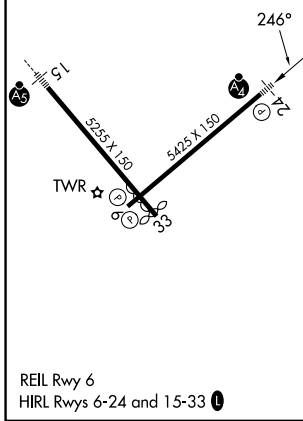
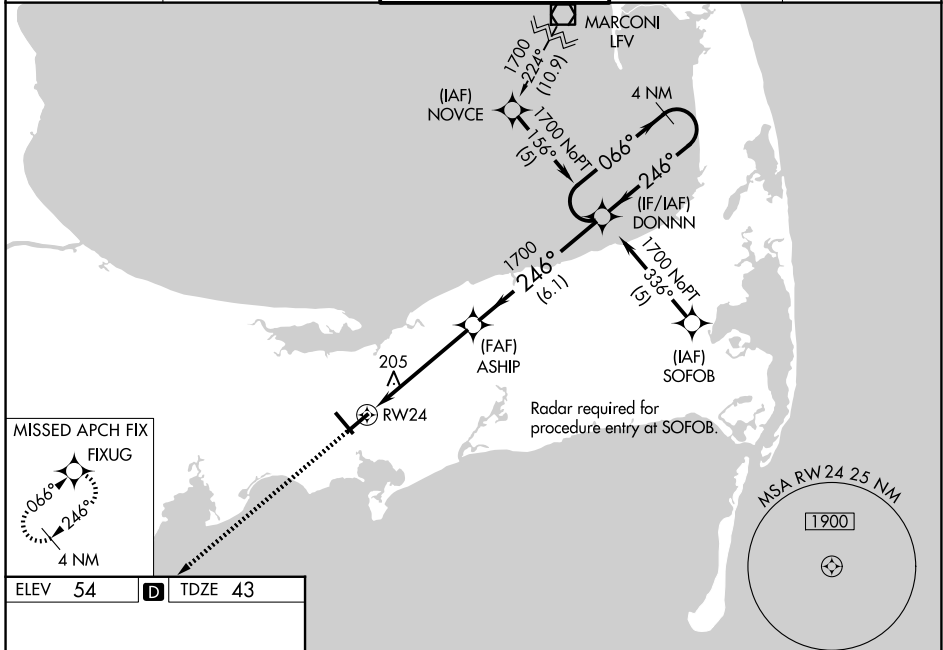
**▼** For uncompensated Baro-VNAV systems, LNAV/VNAV NA below -15°C or above 48°C. Rwy 24 helicopter visibility reduction below RVR 5000 NA. When local altimeter setting not received, use Chatham altimeter setting; increase LPV DA to 350 feet; increase LNAV/VNAV DA to 473 feet; increase all MDAs 40 feet, LNAV visibility Cats C and D to RVR 6000, and Circling visibility Cats C/D 1/2 SM. Baro-VNAV NA when using Chatham Muni altimeter setting. For inop ALS, increase LNAV/VNAV all Cats visibility to RVR 6000, LNAV Cat C/D visibility to 1 3/8 SM. Inop table does not apply to LPV all Cats, and LNAV Cats A and B. Straight in/Circling Rwy 24 at night, operational VGSI required, remain on or above VGSI glidepath until threshold. For inop ALS when using Chatham altimeter setting, increase LNAV/VNAV visibility all Cats to 1 1/2 SM.

MALSF



MISSED APPROACH:  
Climb to 2000 direct  
FIXUG and hold.

ATIS <b>123.8</b>	BOSTON APP CON <b>118.2 284.6</b>	HYANNIS TOWER ★ <b>119.5 (CTAF) 257.8</b>	GND CON <b>118.45</b>	UNICOM <b>122.95</b>
----------------------	--------------------------------------	--	--------------------------	-------------------------



NE-1, 16 APR 2026 to 14 MAY 2026

NE-1, 16 APR 2026 to 14 MAY 2026