

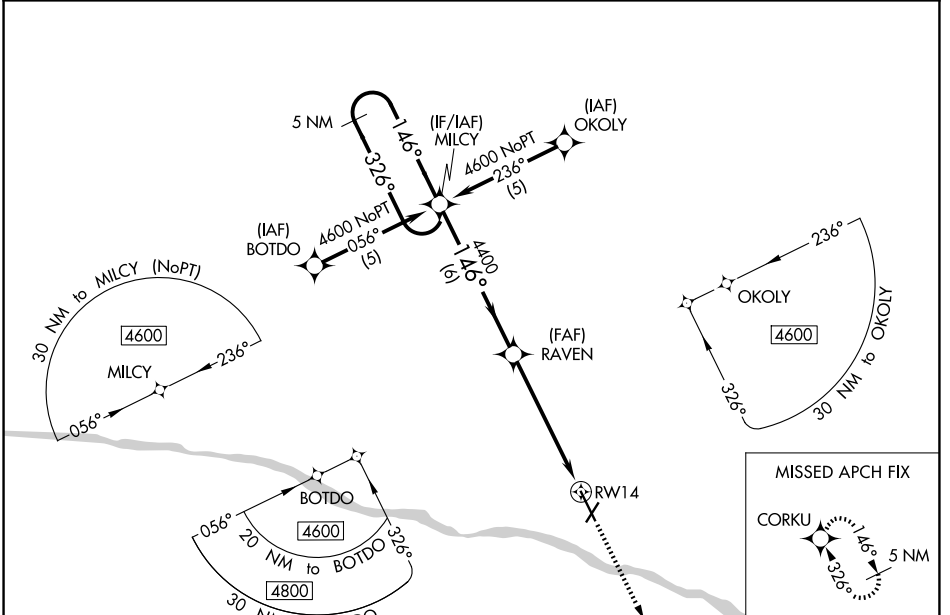
WAAS CH <b>65609</b> <b>W14A</b>	APP CRS <b>146°</b>	Rwy Ldg TDZE Apt Elev	<b>6329</b> <b>2586</b> <b>2596</b>
--	------------------------	-----------------------------	---

# RNAV (GPS) RWY 14

DODGE CITY RGNL (DDC)

<b>⚠</b> DME/DME RNP-0.3 NA. For uncompensated Baro-VNAV systems, LNAV/VNAV NA below -19°C (-2°F) or above 54°C (130°F). For inop ALS, increase LPV all Cats visibility to ¾ SM and LNAV/VNAV all Cats visibility to 1¾ SM.	MALSR 	MISSED APPROACH: Climb to 4600 direct CORKU and hold.
---	-----------	---

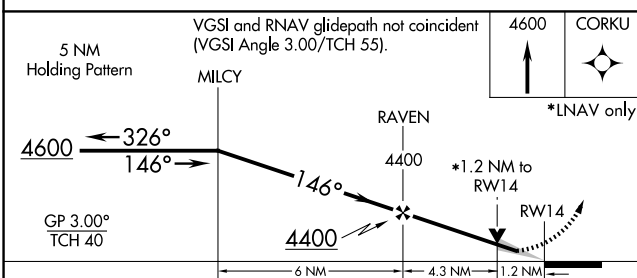
ASOS <b>118.525</b>	KANSAS CITY CENTER <b>125.2 285.425</b>	UNICOM <b>122.7 (CTAF) 0</b>
------------------------	--	---------------------------------



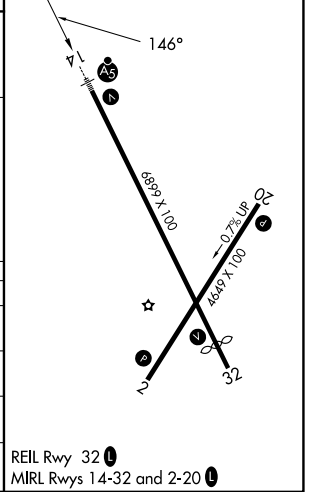
NC-2, 16 APR 2026 to 14 MAY 2026

NC-2, 16 APR 2026 to 14 MAY 2026

ELEV 2596	<b>D</b> TDZE 2586
-----------	--------------------



CATEGORY	A	B	C	D
LPV DA		2836-½	250 (300-½)	
LNAV/VNAV DA		2991-1	405 (400-1)	
LNAV MDA	3020-½	434 (500-½)	3020-¾	434 (500-¾)
CIRCLING	3040-1 444 (500-1)	3080-1 484 (500-1)	3320-2 724 (800-2)	3320-2¼ 724 (800-2¼)



REIL Rwy 32 0  
MIRL Rwys 14-32 and 2-20 0