

LOC I-PSM 110.1	APP CRS 345°	Rwy Ldg TDZE Apt Elev	11321 84 100
---------------------------	------------------------	-----------------------------	---

ILS or LOC RWY 34

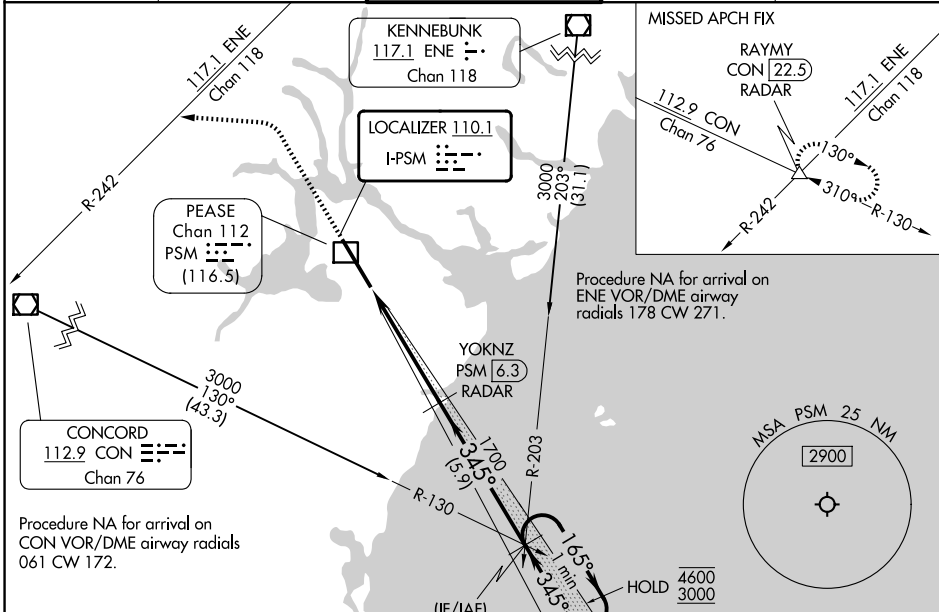
PORTSMOUTH INTL AT PEASE (PSM)

DME or RADAR required.

MAISLR
AS

MISSED APPROACH: Climb to 1500 then climbing left turn on heading 290° to 3000 and ENE VOR/DME R-242 to RAYMY INT/CON VOR/DME 22.5 DME/RADAR and hold.

ATIS 132.05 273.5	BOSTON APP CON 125.05 269.4	PORTSMOUTH TOWER 128.4 269.0	GND CON 120.95 275.8	CLNC DEL 335.8
-----------------------------	---------------------------------------	--	--------------------------------	--------------------------



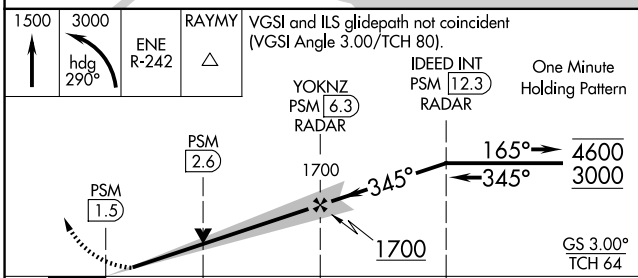
Procedure NA for arrival on ENE VOR/DME airway radials 178 CW 271.

Procedure NA for arrival on CON VOR/DME airway radials 061 CW 172.

Use of CON R-130 and ENE R-203 may be necessary to locate IDEED intersection.

(IF/IAF)
IDEED INT
PSM **12.3**
RADAR
CON **43.3**
ENE **31.1**

ELEV 100	D TDZE 84
----------	------------------



CATEGORY	A	B	C	D	E	HIRL Rwy 16-34												
S-ILS 34	284/24					200 (200-½)	FAF to MAP 4.9 NM											
S-LOC 34	540/24	456 (500-½)	540/45		456 (500-¾)													
CIRCLING	540-1 440 (500-1)	560-1 460 (500-1)	680-1½ 580 (600-1½)	780-2¼ 680 (700-2¼)	800-2½ 700 (700-2½)	<table border="1"> <tr> <td>Knots</td> <td>60</td> <td>90</td> <td>120</td> <td>150</td> <td>180</td> </tr> <tr> <td>Min:Sec</td> <td>4:54</td> <td>3:16</td> <td>2:27</td> <td>1:58</td> <td>1:38</td> </tr> </table>	Knots	60	90	120	150	180	Min:Sec	4:54	3:16	2:27	1:58	1:38
Knots	60	90	120	150	180													
Min:Sec	4:54	3:16	2:27	1:58	1:38													

NE-1, 16 APR 2026 to 14 MAY 2026

NE-1, 16 APR 2026 to 14 MAY 2026