

HOPKINSVILLE, KENTUCKY

ILS or LOC RWY 23

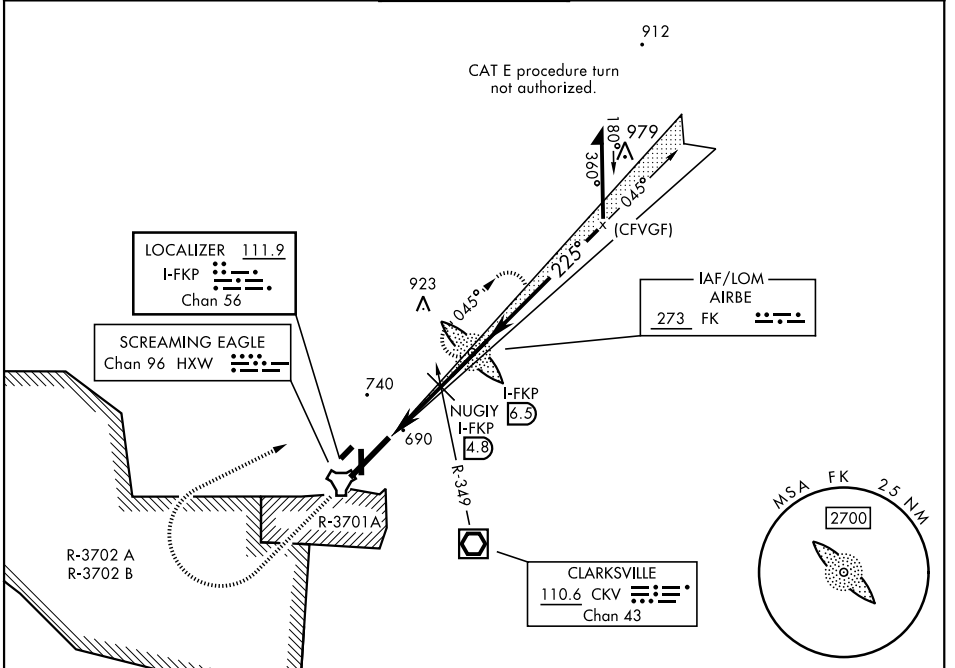
LOC/DME I-FKP 111.9 Chan 56	APCH CRS 225°	Rwy Idg 10,926 TDZE 571 Arprt Elev 571
---	-------------------------	---

[USA]

CAMPBELL AAF (FORT CAMPBELL) (KHOP)

RADAR required	SSALR 	MISSED APPROACH: Climb to 1200 then climbing right turn to 2500 direct AIRBE LOM/I-FKP 6.5 DME, continue climb-in-hold to 2500 (max 230 KIAS).
<p>* When ALS inop, increase RVR to 40, vis to 3/4 miles. ** When ALS inop, increase CAT AB RVR to 55, vis to 1 mile; CAT CDE RVR to 60, vis to 1 1/2 miles. *** Circling not authorized SE of Rwy 5-23.</p>		

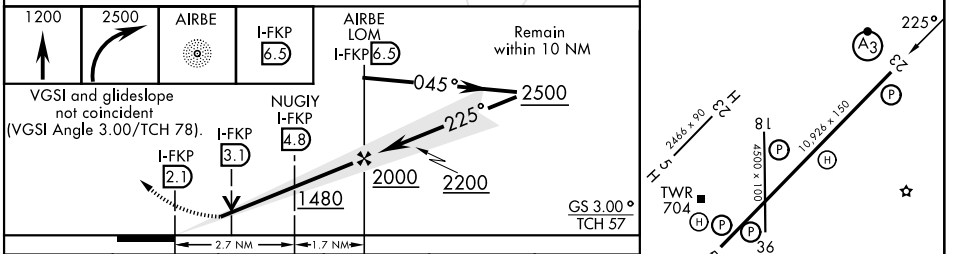
ATIS 125.175 308.4	APP CON 118.1 269.525	TOWER 120.9 278.8	GND CON 121.8 266.8	ASR/PAR
------------------------------	---------------------------------	-----------------------------	-------------------------------	---------



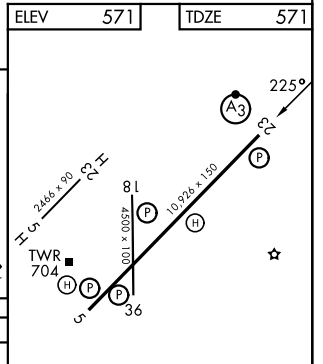
SE-1, 16 APR 2026 to 14 MAY 2026

SE-1, 16 APR 2026 to 14 MAY 2026

ELEV	571	TDZE	571
------	-----	------	-----



CATEGORY	A	B	C	D	E
S-ILS 23*	771/24		200	(200-1/2)	
S-LOC 23**	960/24	389 (400-1/2)	960/35	389	(400-3/8)
CIRCLING***	1060-1	489 (500-1)	1060-1 1/2 489 (500-1 1/2)	1140-2	569 (600-2)



HIRL all rwys					
FAF to MAP 4.4 NM					
Knots	60	90	120	150	180
Min:Sec	4:24	2:56	2:12	1:46	1:28

HOPKINSVILLE, KENTUCKY

36° 40'N - 87° 30'W

CAMPBELL AAF (FORT CAMPBELL) (KHOP)

Amdt 14 10AUG23

ILS or LOC RWY 23