

# TACAN RWY 23

TACAN HXW Chan <b>96</b>	APCH CRS <b>228°</b>	Rwy Idg <b>10,926</b> TDZE <b>571</b> Arprt Elev <b>571</b>
-----------------------------	-------------------------	---

[USA]

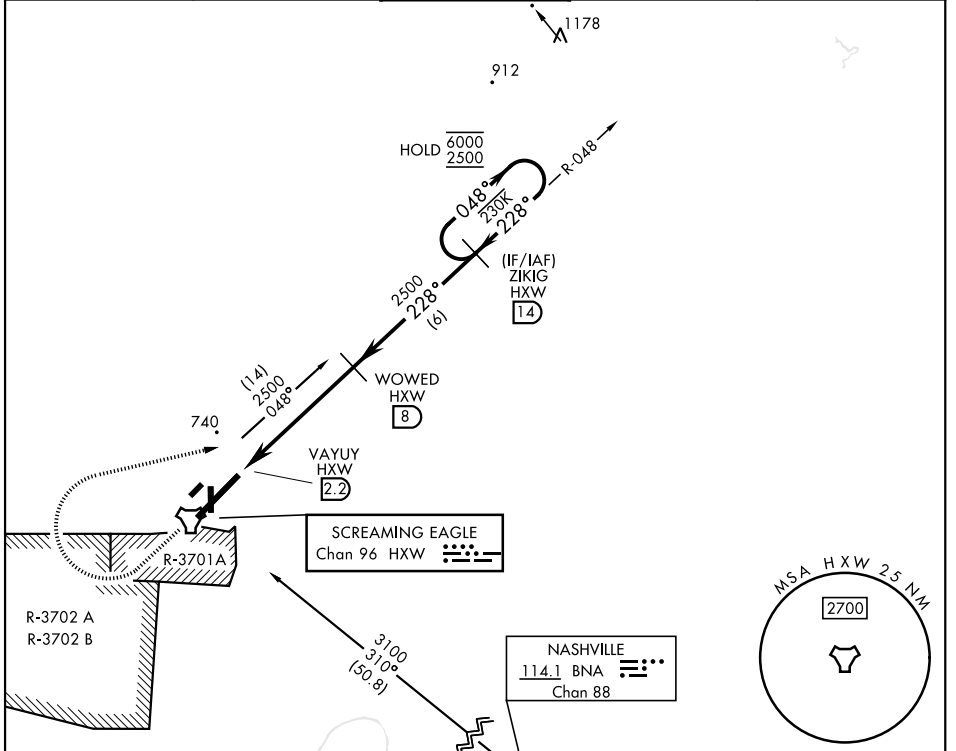
CAMPBELL AAF (FORT CAMPBELL) (KHOP)

\* When ALS inop, increase CAT AB RVR to 55, vis to 1 mile; CAT CDE vis to 1 3/8 miles.  
 \*\* Circling not authorized SE of Rwy 5-23.



MISSED APPROACH: Climb to 1200 then climbing right turn to 2500 on hdg 078° and HXW TACAN R-048 to ZIKIG/HXW 14 DME and hold.

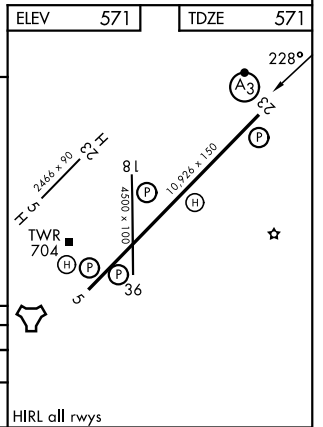
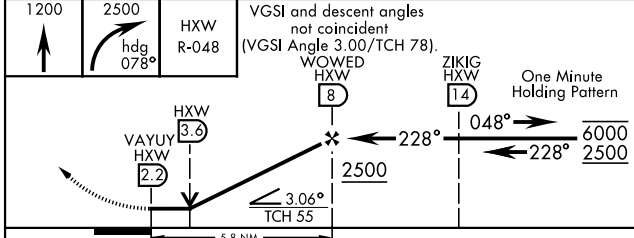
ATIS <b>125.175 308.4</b>	APP CON <b>118.1 269.525</b>	TOWER <b>120.9 278.8</b>	GND CON <b>121.8 266.8</b>	ASR/PAR
------------------------------	---------------------------------	-----------------------------	-------------------------------	---------



SE-1, 16 APR 2026 to 14 MAY 2026

SE-1, 16 APR 2026 to 14 MAY 2026

ELEV	571	TDZE	571
------	-----	------	-----



CATEGORY	A	B	C	D	E
S-23*	1080/24	509 (600-3/4)	1080/55	509 (600-1 1/4)	
CIRCLING**	1080-1	509 (600-1)	1080-1 1/2 509 (600-1 1/2)	1140-2	569 (600-2)

HIRL all rwys

# TACAN RWY 23