

APP CRS	Rwy Ldg	6013
073°	TDZE	68
	Apt Elev	77

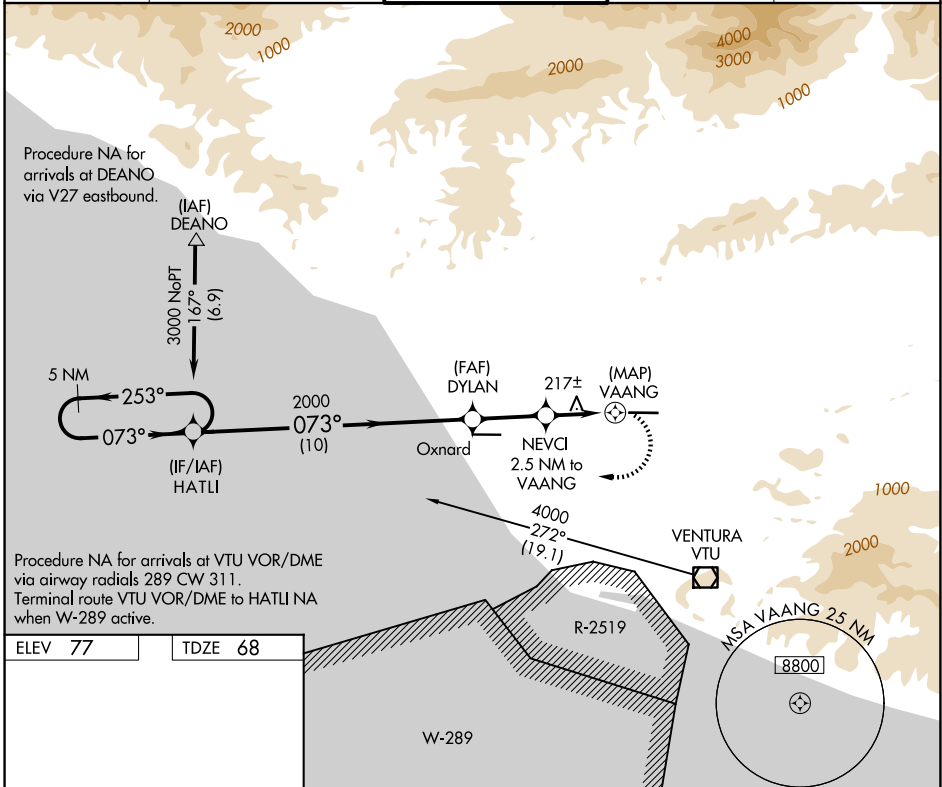
RNAV (GPS) RWY 8

CAMARILLO (CMA)

⚠ Circling NA north of Rwy 8-26. DME/DME RNP-0.3 NA.
 When local altimeter setting not received, use Oxnard altimeter setting and increase all MDA 20 feet.

MISSED APPROACH: Climbing right turn to 3000 direct HATLI and hold.

ATIS 126.025	POINT MUGU APP CON * 124.7 335.5	CAMARILLO TOWER * 128.2 (CTAF) 0 269.4	GND CON 121.8	UNICOM 122.95
------------------------	--	--	-------------------------	-------------------------



ELEV 77 TDZE 68

073°

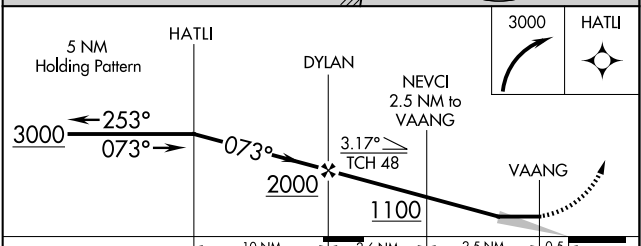
6013 X 150

TWR

Ultralight Operating Area

☆

REIL Rwys 8 and 26 **Ⓛ**
 MIRL Rwy 8-26 **Ⓛ**



CATEGORY	A	B	C	D
LNAV MDA	840-1 772 (800-1)	840-1¼ 772 (800-1¼)	840-2½	772 (800-2½)
CIRCLING	840-1 763 (800-1)	840-1¼ 763 (800-1¼)	840-2½ 763 (800-2½)	1100-3 1023 (1100-3)

SW-3, 16 APR 2026 to 14 MAY 2026

SW-3, 16 APR 2026 to 14 MAY 2026