

APP CRS	Rwy Ldg	<b>6013</b>
<b>252°</b>	TDZE	<b>77</b>
	Apt Elev	<b>77</b>

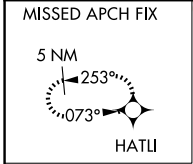
# RNAV (GPS) Y RWY 26

CAMARILLO (CMA)

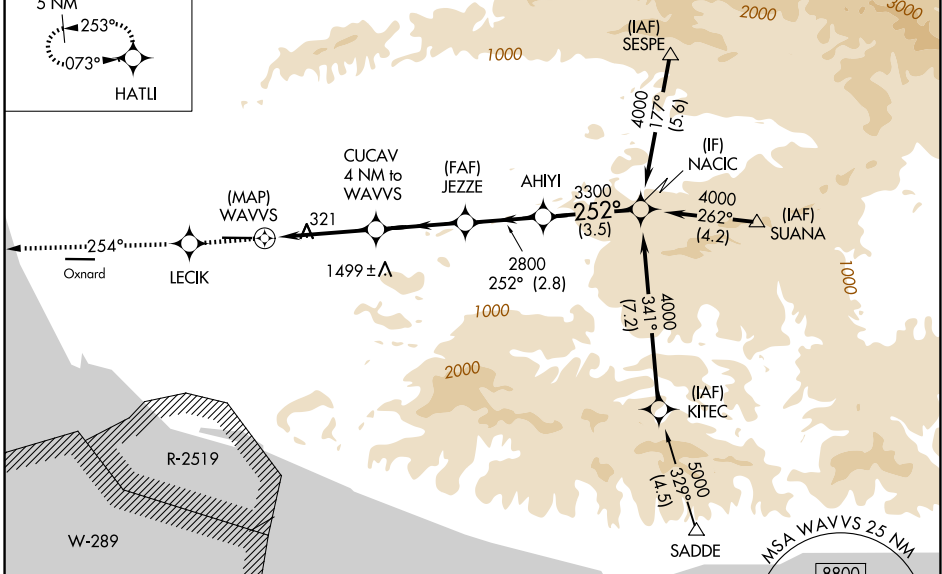
**⚠** Circling NA north of Rwy 8-26. DME/DME RNP-0.3 NA.  
**⚠** If local altimeter setting not received, use Oxnard altimeter setting and increase all MDAs 20 feet. VDP NA when using Oxnard altimeter setting.

MISSED APPROACH: Climb to 3000 direct LECIK and via 254° track to HATLI and hold.

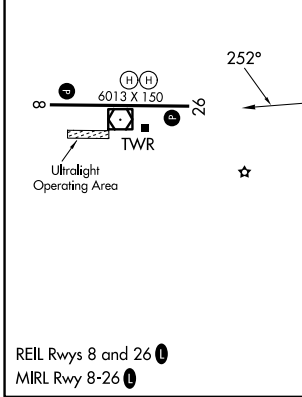
ATIS <b>126.025</b>	POINT MUGU APP CON * <b>124.7 335.5</b>	CAMARILLO TOWER * <b>128.2 (CTAF) 0 269.4</b>	GND CON <b>121.8</b>	UNICOM <b>122.95</b>
------------------------	--	--	-------------------------	-------------------------



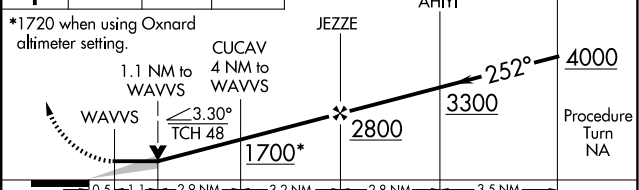
Procedure NA for arrivals at SUANA via V326 eastbound and arrivals at SESPE via V186-597 westbound.



ELEV 77	TDZE 77
---------	---------



3000	LECIK	HATLI	VGSI and descent angles not coincident (VGSI Angle 3.00/TCH 48).
------	-------	-------	--



CATEGORY	A	B	C	D
LNAV MDA	620-1	543 (600-1)	620-1½ 543 (600-1½)	620-1¾ 543 (600-1¾)
CIRCLING	620-1	543 (600-1)	640-1½ 563 (600-1½)	1100-3 1023 (1100-3)

SW-3, 16 APR 2026 to 14 MAY 2026

SW-3, 16 APR 2026 to 14 MAY 2026