

WAAS CH <b>58202</b> W <b>26A</b>	APP CRS <b>257°</b>	Rwy Ldg TDZE Apt Elev	<b>6013</b> <b>77</b> <b>77</b>
---	------------------------	-----------------------------	---------------------------------------

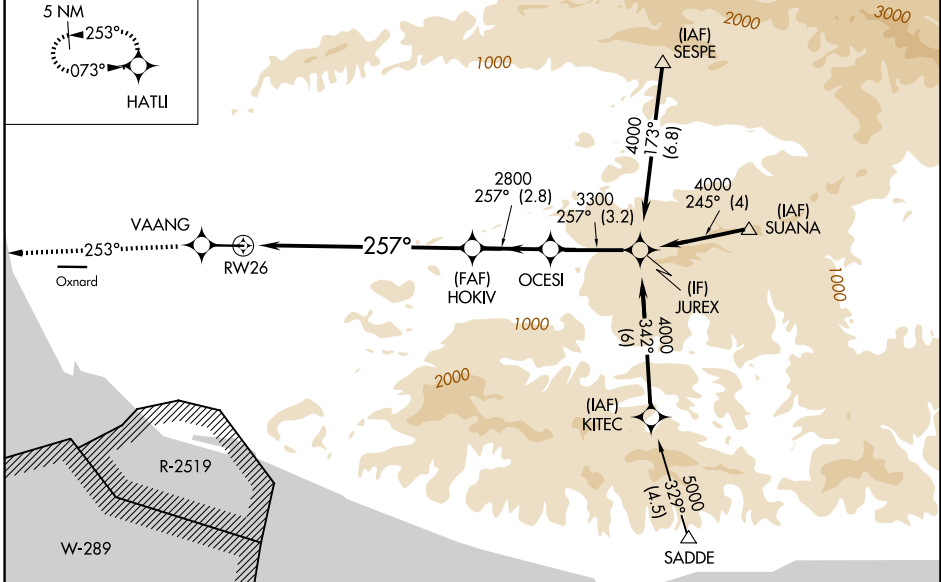
# RNAV (GPS) Z RWY 26

CAMARILLO (CMA)

<b>V</b> DME/DME RNP -0.3 NA. <b>NA</b> If local altimeter setting not received, use Oxnard altimeter setting and increase DA 18 feet.	MISSED APPROACH: Climb to 3000 direct VAANG and via 253° track to HATLI and hold.
---	---

ATIS <b>126.025</b>	POINT MUGU APP CON * <b>124.7 335.5</b>	CAMARILLO TOWER * <b>128.2 (CTAF) 0 269.4</b>	GND CON <b>121.8</b>	UNICOM <b>122.95</b>
------------------------	--	--	-------------------------	-------------------------

MISSED APCH FIX Procedure NA for arrivals at SUANA via V326 eastbound and arrivals at SESPE via V186-597 westbound.



ELEV 77	TDZE 77
---------	---------

REIL Rwy 8 and 26  
MIRL Rwy 8-26



3000	VAANG	253° tr	HATLI	JUREX	Procedure Turn NA
				OCESI	
				HOKIV	
				2800	
				3300	
				4000	
				GP 3.00°	
				TCH 48	
				8.2 NM	
				2.8 NM	
				3.2 NM	
CATEGORY	A	B	C	D	
LPV DA		327-3/4	250 (300-3/4)		

SW-3, 16 APR 2026 to 14 MAY 2026

SW-3, 16 APR 2026 to 14 MAY 2026