

WAAS CH <b>86841</b> <b>W30A</b>	APP CRS <b>306°</b>	Rwy Ldg TDZE Apt Elev	<b>3900</b> <b>657</b> <b>684</b>
--	------------------------	-----------------------------	---

# RNAV (GPS) RWY 30

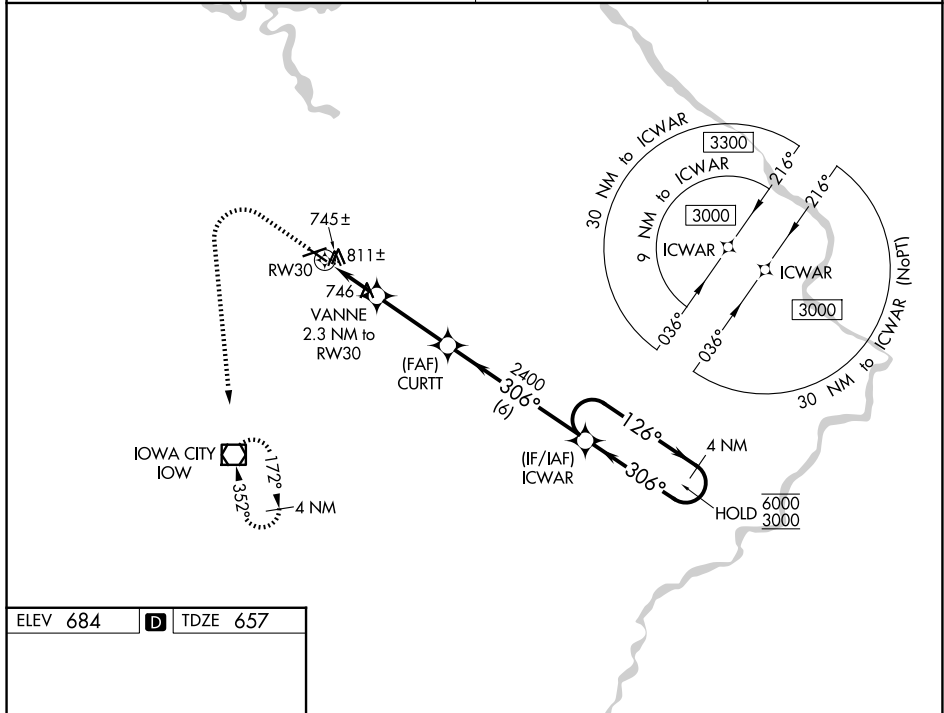
IOWA CITY MUNI (IOW)

RNP APCH - GPS.

**⚠** Rwy 30 helicopter visibility reduction below 1 SM NA. Rwy 30 procedure NA at night. Circling Rwy 12 NA at night. When local altimeter setting not received, use CID altimeter setting and increase all MDA 80 feet and LNAV visibility Cat C/D 1/8 SM and LP and Circling Cat C/D visibility 1/4 SM.

MISSED APPROACH: Climb to 1800 then climbing left turn to 3000 direct IOW VOR/DME and hold.

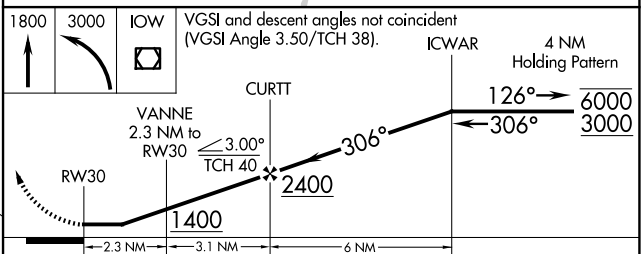
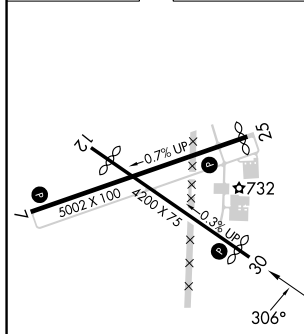
ASOS <b>128.075</b>	CEDAR RAPIDS APP CON * <b>119.7 266.8</b>	CLNC DEL <b>119.05</b>	UNICOM <b>122.8 (CTAF) 0</b>
------------------------	--	---------------------------	---------------------------------



NC-3, 16 APR 2026 to 14 MAY 2026

NC-3, 16 APR 2026 to 14 MAY 2026

ELEV 684	<b>D</b>	TDZE 657
----------	----------	----------



CATEGORY	A	B	C	D
LP MDA	1000-1 343 (400-1)			
LNAV MDA	1080-1 423 (400-1)	1080-1 1/4 423 (400-1 1/4)		
CIRCLING	1220-1 536 (600-1)	1240-1 556 (600-1)	1440-2 1/4 756 (800-2 1/4)	1440-2 1/2 756 (800-2 1/2)

REIL Rwy 7 and 25 & 30 **0**  
MIRL Rwy 7-25 and 12-30 **0**