

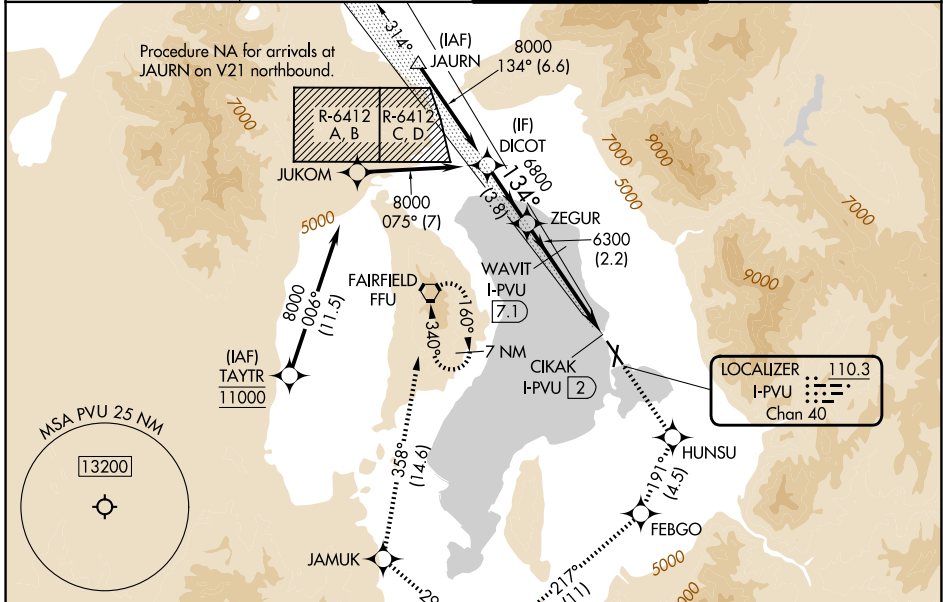
LOC/DME I-PVU 110.3 Chan 40	APP CRS 134°	Rwy Ldg 8599 TDZE 4497 Apt Elev 4497
---	------------------------	---

ILS or LOC RWY 13

PROVO MUNI (PVU)

RNP APCH - GPS.	MISSED APPROACH: Climb to 9000 direct HUNSU and on track 191° to FEBGO and on track 217° to ZARAK and on track 299° to JAMUK and on track 358° to FFU VORTAC and hold. *Missed approach requires minimum climb of 215 feet per NM to 7760.
<p>▼ Rwy 13 helicopter visibility reduction below 3/4 SM NA.</p> <p>▲ Circling Rwy 18, 36 NA at night. When local altimeter setting not received, procedure NA. Circling NA east of Rwy 18 and 31.</p>	

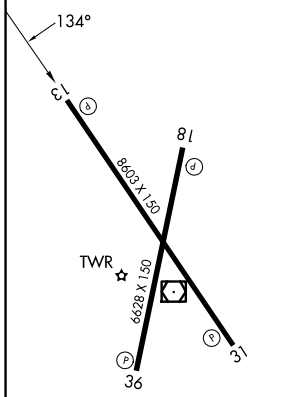
ATIS 135.175	SALT LAKE CITY APP CON 118.85 233.7	PROVO TOWER * 125.3 (CTAF)	GND CON 119.4
------------------------	---	--------------------------------------	-------------------------



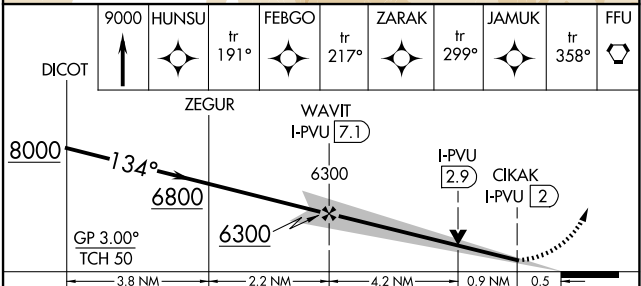
SW-4, 16 APR 2026 to 14 MAY 2026

SW-4, 16 APR 2026 to 14 MAY 2026

ELEV 4497	D	TDZE 4497
-----------	----------	-----------



REIL Rwy 13
HIRL Rwy 13-31
MIRL Rwy 18-36



CATEGORY	A	B	C	D
S-ILS 13*	4756-3/4 259 (300-3/4)			
S-ILS 13	4925-1 1/4 428 (500-1 1/4)			
S-LOC 13	4980-1	483 (500-1)	4980-1 3/8	483 (500-1 3/8)
CIRCLING	4980-1	483 (500-1)	5160-1 3/4	5280-2 1/2
			663 (700-1 3/4)	783 (800-2 1/2)