

WAAS CH 97307 W13A	APP CRS 134°	Rwy Ldg TDZE Apt Elev	8599 4497 4497
--	------------------------	-----------------------------	---

RNAV (GPS) RWY 13

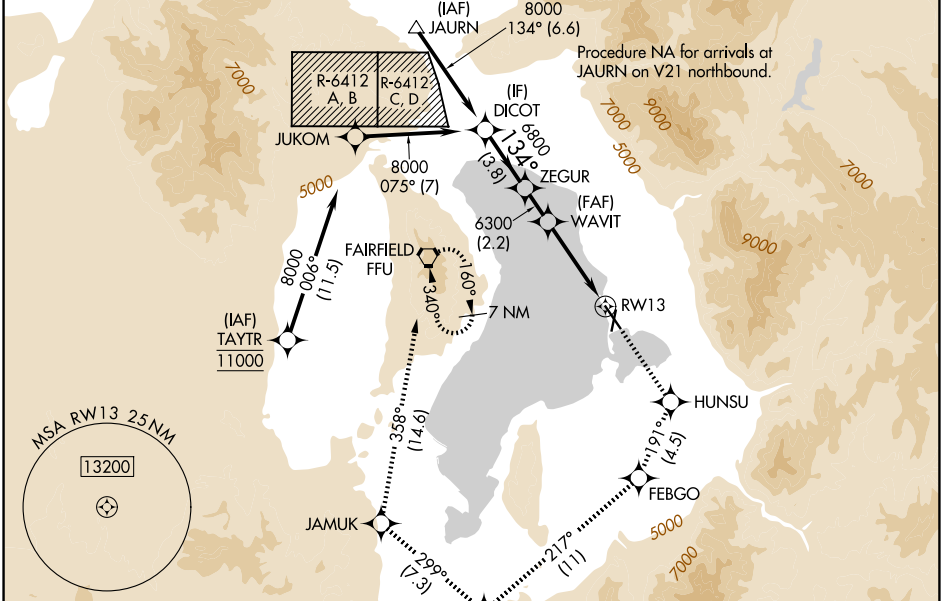
PROVO MUNI (PVU)

RNP APCH - GPS.

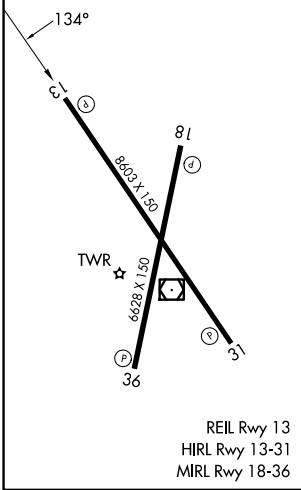
⚠ Rwy 13 helicopter visibility reduction below 3/4 SM NA. Circling Rwy 18, 36 NA at night. For uncompensated Baro-VNAV systems, LNAV/VNAV NA below -23°C or above 54°C. When local altimeter setting not received, procedure NA. Circling NA east of Rwy 18 and 31.

MISSED APPROACH: Climb to 9000 direct HUNSU and on track 191° to FEBGO and on track 217° to ZARAK and on track 299° to JAMUK and on track 358° to FFU VORTAC and hold. *Missed approach requires minimum climb of 215 feet per NM to 7760.

ATIS 135.175	SALT LAKE CITY APP CON 118.85 233.7	PROVO TOWER * 125.3 (CTAF)	GND CON 119.4
------------------------	---	--------------------------------------	-------------------------



ELEV 4497	D	TDZE 4497
-----------	----------	-----------



	9000	HUNSU	FEBGO	ZARAK	JAMUK	FFU
DICOT	↑	tr 191°	tr 217°	tr 299°	tr 358°	tr 358°
	8000	ZEGUR	WAVIT			
	6800	6300	6300	1.9 NM to RW13	RW13	
	GP 3.00°					
	TCH 50					
	3.8 NM	2.2 NM	3.7 NM	1.9 NM		
CATEGORY	A	B	C	D		
LPV DA*		4756-3/4	259 (300-3/4)			
LNAV/VNAV DA*		4838-1	341 (400-1)			
LPV DA		4925-1 1/4	428 (500-1 1/4)			
LNAV/VNAV DA		4981-1 3/8	484 (500-1 3/8)			
LNAV MDA	5140-1	643 (700-1)	5140-1 7/8	643 (700-1 1/8)		
CIRCLING	5140-1	643 (700-1)	5160-1 7/8	5280-2 1/2	783 (800-2 1/2)	