

SALT LAKE CITY APP CON  
118.85 233.7  
ATIS  
135.175

RNAV 1 - GPS.  
RADAR required.

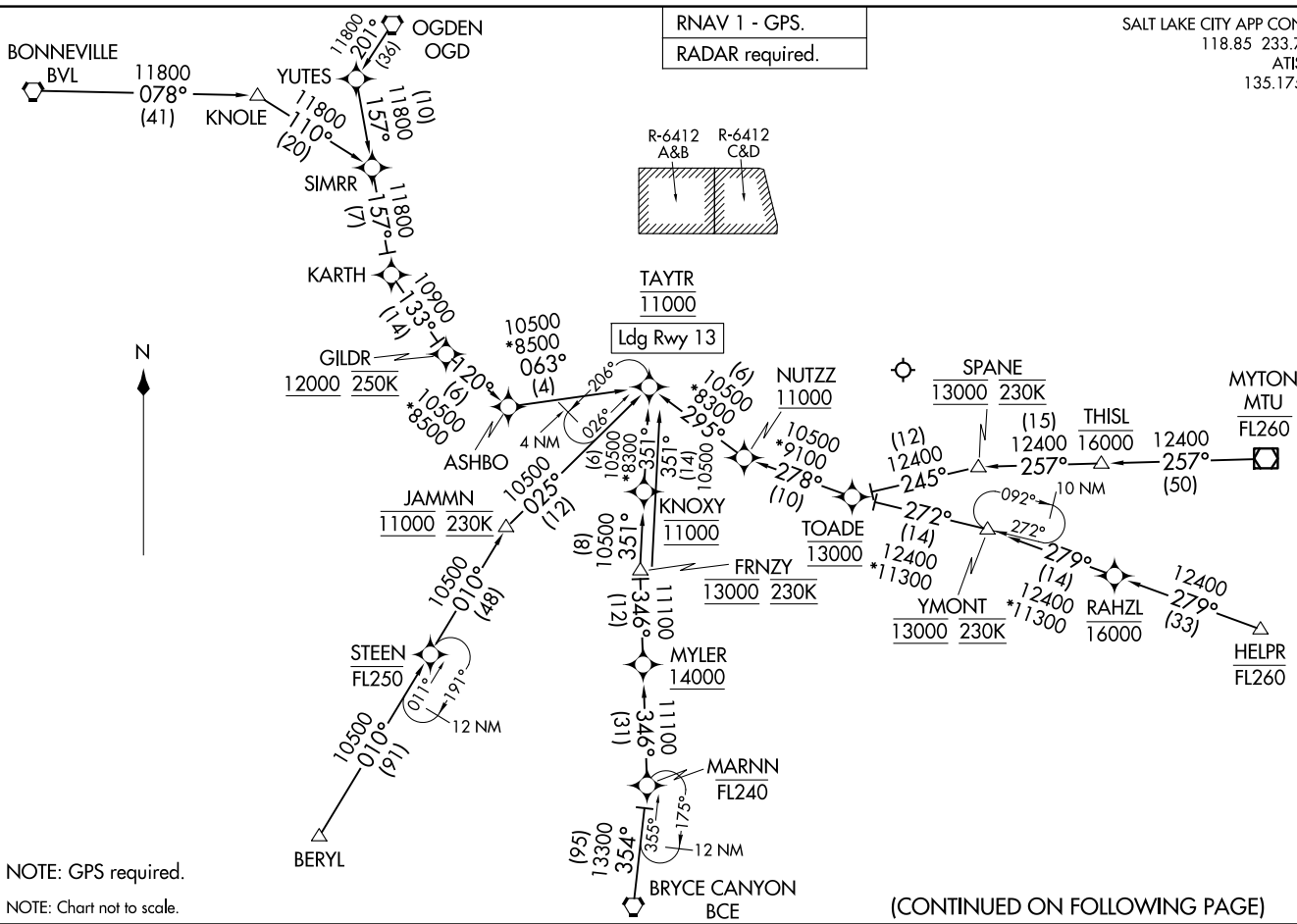
(TAYTR, TAYTR3) 26078  
TAYTR THREE ARRIVAL (RNAV)

AL-683 (FAA)

PROVO MUNI (PVTU)  
PROVO, UTAH

TAYTR THREE ARRIVAL (RNAV)  
(TAYTR, TAYTR3) 19MAR26

PROVO, UTAH  
PROVO MUNI (PVTU)



NOTE: GPS required.  
NOTE: Chart not to scale.

(CONTINUED ON FOLLOWING PAGE)

ARRIVAL ROUTE DESCRIPTION

BERYL TRANSITION (BERYL.TAYTR3)

BONNEVILLE TRANSITION (BVL.TAYTR3)

BRYCE CANYON TRANSITION (BCE.TAYTR3)

FRNZY TRANSITION (FRNZY.TAYTR3)

HELPR TRANSITION (HELPR.TAYTR3)

JAMMN TRANSITION (JAMMN.TAYTR3)

KNOLE TRANSITION (KNOLE.TAYTR3)

MARNN TRANSITION (MARNN.TAYTR3)

MYTON TRANSITION (MTU.TAYTR3)

OGDEN TRANSITION (OGD.TAYTR3)

RAHZL TRANSITION (RAHZL.TAYTR3)

SPANE TRANSITION (SPANE.TAYTR3)

STEEN TRANSITION (STEEN.TAYTR3)

THISL TRANSITION (THISL.TAYTR3)

YMONT TRANSITION (YMONT.TAYTR3)

From TAYTR, expect ILS or RNAV RWY 13 approach.

LOST COMMUNICATIONS

Proceed on assigned instrument approach.

SW-4, 16 APR 2026 to 14 MAY 2026

SW-4, 16 APR 2026 to 14 MAY 2026