

WAAS CH <b>70644</b> <b>W23A</b>	APP CRS <b>234°</b>	Rwy Ldg TDZE Apt Elev	<b>4001</b> <b>3652</b> <b>3658</b>
----------------------------------------	------------------------	-----------------------------	-------------------------------------------

# RNAV (GPS) RWY 23

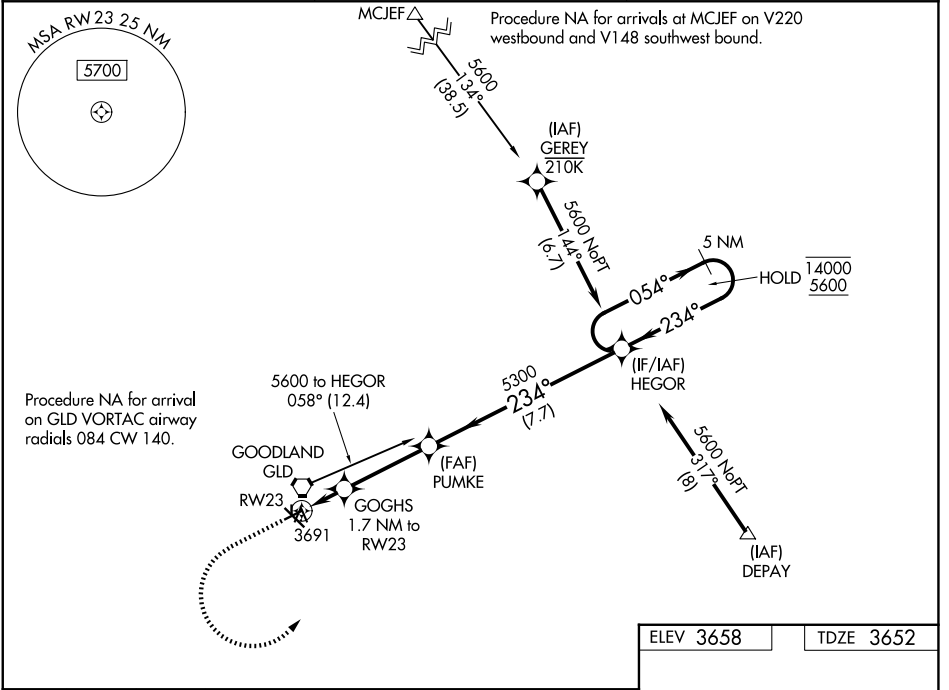
RENNER FLD/GOODLAND MUNI (GLD)

RNP APCH - GPS.

**⚠** Circling NA to Rwy 17 and 35. Circling NA south of Rwy 5 and 30.  
**⚠** For uncompensated Baro-VNAV systems, LNAV/VNAV NA below -21°C or above 54°C. Circling Rwy 5 NA at night.

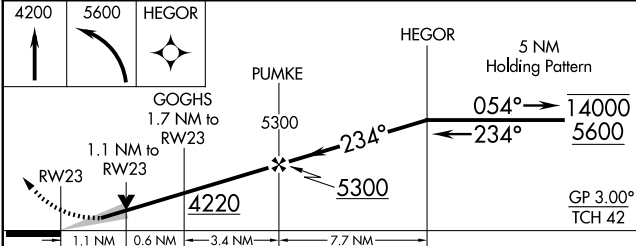
MISSED APPROACH: Climb to 4200 then climbing left turn to 5600 direct HEGOR and hold.

ASOS <b>121.025</b>	DENVER CENTER <b>132.7 226.675</b>	UNICOM <b>122.8 (CTAF) 0</b>
------------------------	---------------------------------------	---------------------------------



NC-2, 16 APR 2026 to 14 MAY 2026

NC-2, 16 APR 2026 to 14 MAY 2026



ELEV 3658	TDZE 3652
-----------	-----------

Obstacle Diagram: 4001 X 75, 5400 X 100, 1754 X 40, 35. Bearings: 234°, 054°. Gradient: -0.6% UP.

CATEGORY	A	B	C	D
LPV DA	3902-1 250 (300-1)			NA
LNAV/VNAV DA	3939-1 287 (300-1)			NA
LNAV MDA	4040-1 388 (400-1)	4040-1½ 388 (400-1½)		NA
CIRCLING	4080-1 422 (500-1)	4120-1 462 (500-1)	4120-1½ 462 (500-1½)	NA

REIL Rwy 12 0  
MIRL Rwy 5-23 and 12-30 0