

WAAS CH 48920 W30A	APP CRS 305°	Rwy Ldg TDZE 3653 Apt Elev 3657
--	------------------------	---

RNAV (GPS) RWY 30

RENNER FLD/GOODLAND MUNI (G.LD)

RNP APCH.

⚠ Circling NA to Rws 17 and 35. Circling NA south of Rws 5 and 30. Rwy 30 helicopter visibility reduction below 3/4 SM NA. Inop table does not apply. For uncompensated Baro-VNAV systems, LNAV/VNAV NA below -22°C or above 54°C.

MALSR



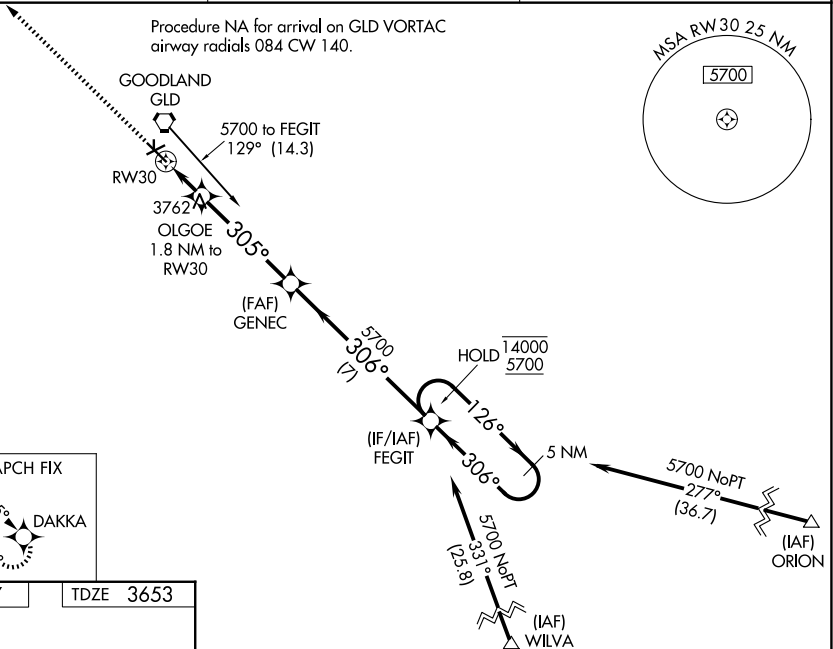
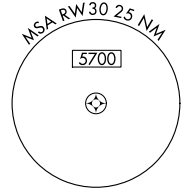
MISSED APPROACH: Climb to 5600 direct DAKKA and hold.

ASOS
121.025

DENVER CENTER
132.7 226.675

UNICOM
122.8 (CTAF)

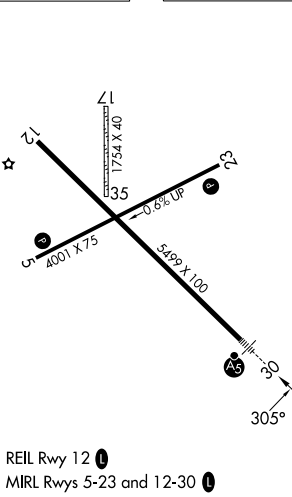
Procedure NA for arrival on GLD VORTAC
airway radials 084 CW 140.



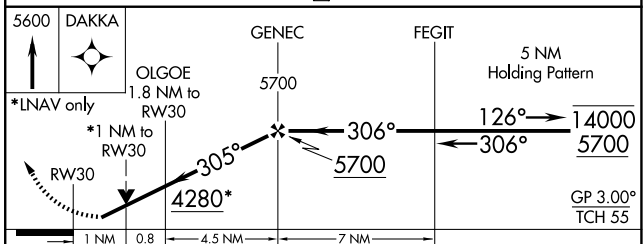
MISSED APCH FIX



ELEV 3657 TDZE 3653



REIL Rwy 12 **Ⓛ**
MIRL Rws 5-23 and 12-30 **Ⓛ**



CATEGORY	A	B	C	D
LPV DA		3903-1	250 (300-1)	
LNAV/VNAV DA		3903-1	250 (300-1)	
LNAV MDA		4020-1	367 (400-1)	
CIRCLING	4080-1 423 (500-1)	4120-1 463 (500-1)	4120-1½ 463 (500-1½)	4240-2 583 (600-2)

NC-2, 16 APR 2026 to 14 MAY 2026

NC-2, 16 APR 2026 to 14 MAY 2026