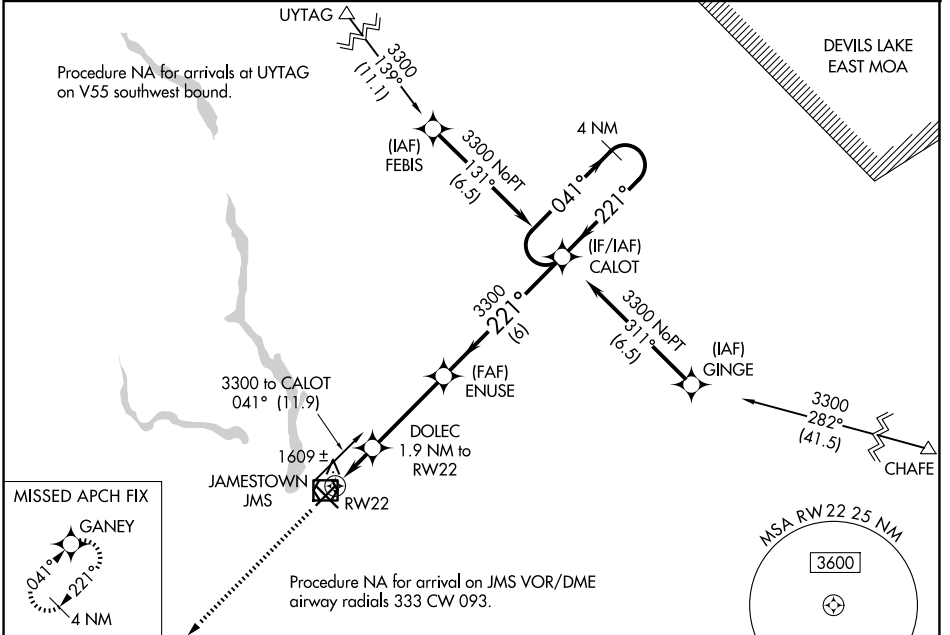


WAAS CH <b>70505</b> W22A	APP CRS <b>221°</b>	Rwy Ldg TDZE Apt Elev	<b>5750</b> <b>1500</b> <b>1500</b>
---------------------------------	------------------------	-----------------------------	---

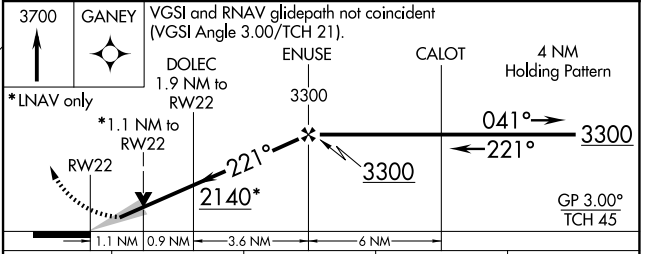
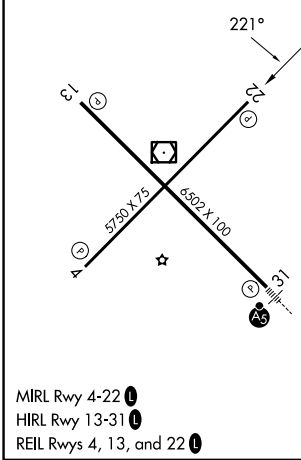
# RNAV (GPS) RWY 22

JAMESTOWN RGNL (JMS)

<p><b>⚠</b> For uncompensated Baro-VNAV systems, LNAV/VNAV NA below -21°C (5°F) or above 54°C (130°F). DME/DME RNP-0.3 NA.</p>		<p>MISSED APPROACH: Climb to 3700 direct GANEY and hold.</p>
ASOS <b>118.425</b>	MINNEAPOLIS CENTER <b>124.2 270.3</b>	UNICOM <b>123.0 (CTAF) 0</b>



ELEV 1500	<b>D</b>	TDZE 1500
-----------	----------	-----------



CATEGORY	A	B	C	D
LPV DA		1750-3/4	250 (300-3/4)	
LNAV/VNAV DA		1790-1	290 (300-1)	
LNAV MDA		1860-1	360 (400-1)	
CIRCLING	1960-1	460 (500-1)	2000-1 1/2 500 (500-1 1/2)	2300-2 1/2 800 (800-2 1/2)

NC-1, 16 APR 2026 to 14 MAY 2026

NC-1, 16 APR 2026 to 14 MAY 2026