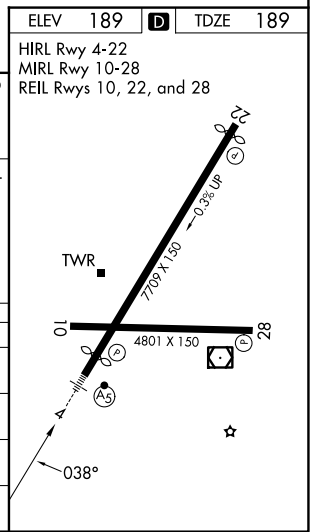
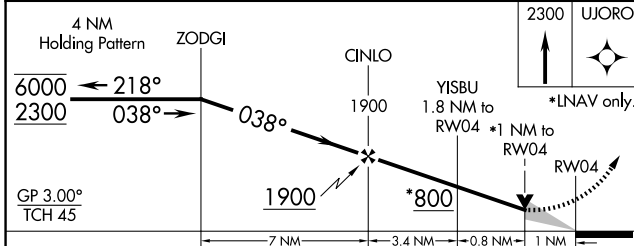
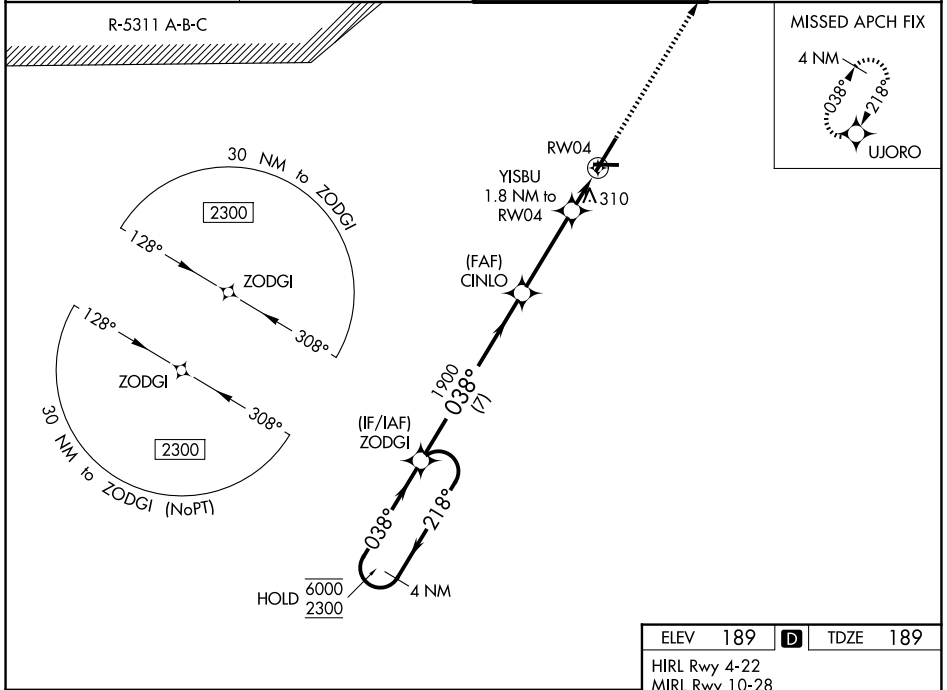


WAAS CH <b>50111</b> <b>W04A</b>	APP CRS <b>038°</b>	Rwy Ldg TDZE Apt Elev	<b>6408</b> <b>189</b> <b>189</b>
----------------------------------------	------------------------	-----------------------------	-----------------------------------------

# RNAV (GPS) RWY 4

FAYETTEVILLE RGNL/GRANNIS FLD (FAY)

RNP APCH.		MALSRL	MISSED APPROACH: Climb to 2300 direct UJORO and hold.
For uncompensated Baro-VNAV systems, LNAV/VNAV NA below -10° C or above 54°C. # RVR 1800 authorized with use of FD or AP or HUD to DA.	ATIS <b>121.25</b>	FAYETTEVILLE APP CON <b>133.0 290.25</b>	FAYETTEVILLE TOWER <b>118.3 269.2</b>
		GND CON	<b>121.7 348.6</b>



CATEGORY	A	B	C	D
LPV DA #	389/24 200 (200-½)			
LNAV/VNAV DA	588/35 399 (400-⅙)			
LNAV MDA	560/24 371 (400-½)			
CIRCLING	640-1 451 (500-1)	660-1 471 (500-1)	860-2 671 (700-2)	860-2¼ 671 (700-2¼)

SE-2, 16 APR 2026 to 14 MAY 2026

SE-2, 16 APR 2026 to 14 MAY 2026