

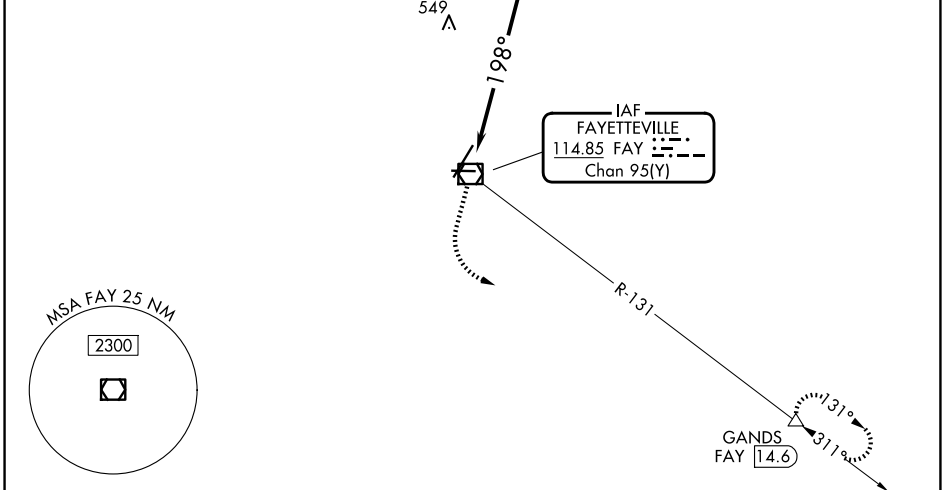
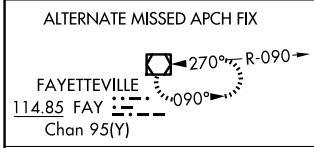
VOR/DME <b>FAY</b> <b>114.85</b> Chan <b>95(Y)</b>	APP CRS <b>198°</b>	Rwy Ldg <b>6408</b> TDZE <b>180</b> Apt Elev <b>189</b>
--	------------------------	---

# VOR RWY 22

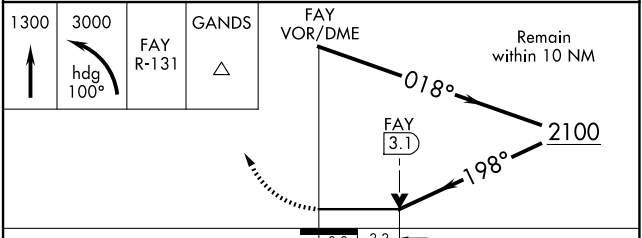
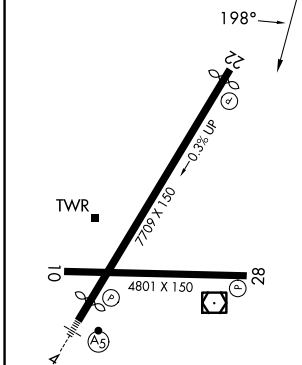
FAYETTEVILLE RGNL/GRANNIS FLD (FAY)

DME required.		MISSED APPROACH: Climb to 1300 then climbing left turn to 3000 on heading 100° and on FAY VOR/DME R-131 to GANDS/FAY 14.6 DME and hold.	
---------------	--	---	--

ATIS <b>121.25</b>	FAYETTEVILLE APP CON <b>133.0 290.25</b>	FAYETTEVILLE TOWER <b>118.3 269.2</b>	GND CON <b>121.7 348.6</b>
-----------------------	---	--	-------------------------------



ELEV 189	<b>D</b>	TDZE 180
----------	----------	----------



CATEGORY	A	B	C	D
S-22	900-1	720 (800-1)	900-2	720 (800-2)
CIRCLING	900-1	711 (800-1)	900-2 711 (800-2)	900-2¼ 711 (800-2¼)

SE-2, 16 APR 2026 to 14 MAY 2026

SE-2, 16 APR 2026 to 14 MAY 2026