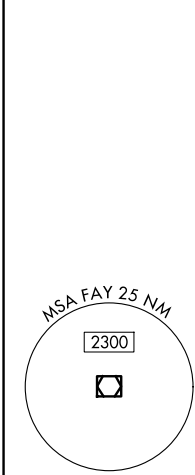
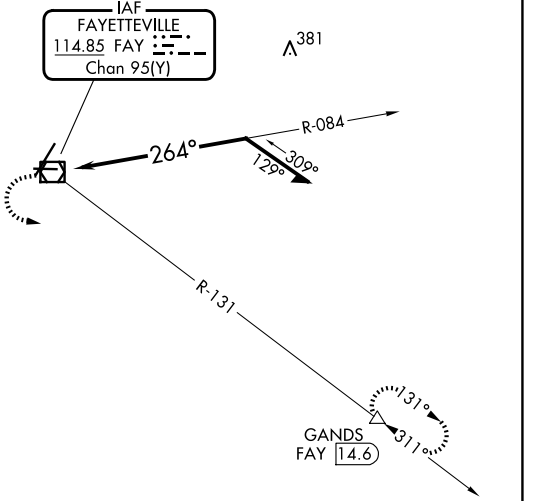
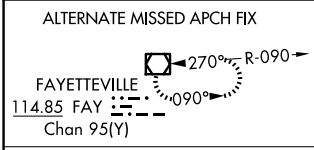


VOR/DME FAY 114.85 Chan 95(Y)	APP CRS 264°	Rwy Ldg 4801 TDZE 188 Apt Elev 189
--	------------------------	---

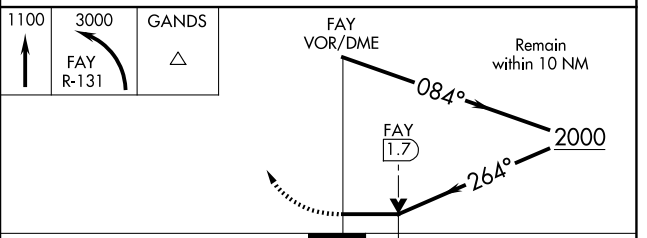
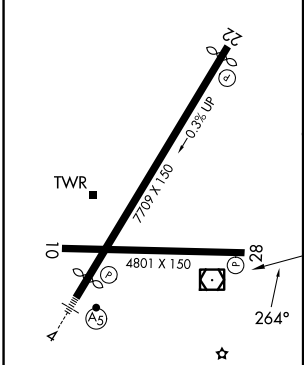
VOR RWY 28
FAYETTEVILLE RGNL/GRANNIS FLD (FAY)

DME required. MISSED APPROACH: Climb to 1100 then climbing left turn to 3000 on FAY VOR/DME R-131 to GANDS/FAY 14.6 DME and hold.

ATIS 121.25	FAYETTEVILLE APP CON 133.0 290.25	FAYETTEVILLE TOWER 118.3 269.2	GND CON 121.7 348.6
-----------------------	---	--	-------------------------------



ELEV 189	D	TDZE 188
-----------------	----------	-----------------



CATEGORY	A	B	C	D
S-28	700-1	512 (600-1)	700-1 $\frac{3}{8}$	512 (600-1 $\frac{3}{8}$)
CIRCLING	700-1	511 (600-1)	860-2 671 (700-2)	860-2 $\frac{1}{4}$ 671 (700-2 $\frac{1}{4}$)

SE-2, 16 APR 2026 to 14 MAY 2026

SE-2, 16 APR 2026 to 14 MAY 2026