

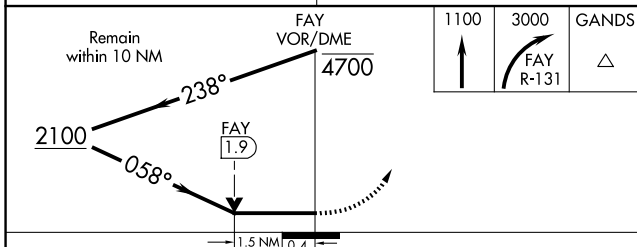
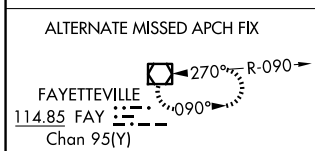
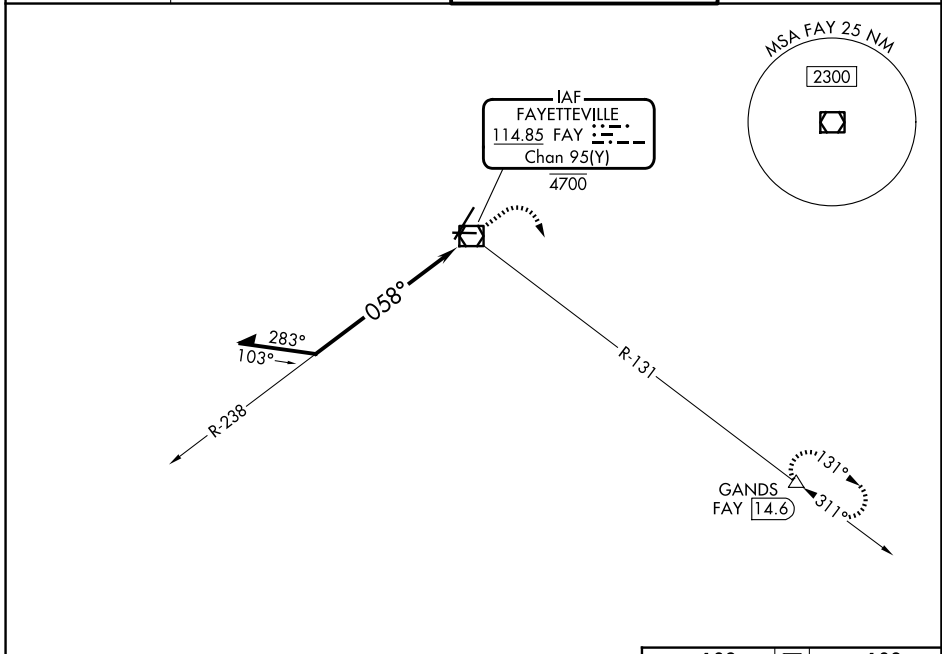
VOR/DME	FAY	Rwy Ldg	6408
114.85	APP CRS	TDZE	189
Chan 95(Y)	058°	Apt Elev	189

VOR RWY 4

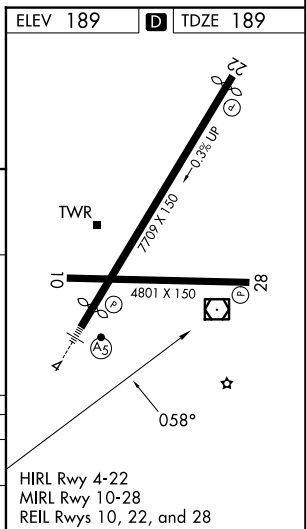
FAYETTEVILLE RGNL/GRANNIS FLD (FAY)

DME required.	MALSR	MISSED APPROACH: Climb to 1100 then climbing right turn to 3000 on FAY VOR/DME R-131 to GANDS/FAY 14.6 DME and hold.
▼ Rwy 4 helicopter visibility reduction below RVR 4000 NA. ▲ For inop ALS, increase S-4 Cats A/B visibility to RVR 5500.		

ATIS 121.25	FAYETTEVILLE APP CON 133.0 290.25	FAYETTEVILLE TOWER 118.3 269.2	GND CON 121.7 348.6
-----------------------	---	--	-------------------------------



CATEGORY	A	B	C	D
	S-4	720/40 531 (600-¾)	720/55 531 (600-1)	
CIRCLING	720-1 531 (600-1)		860-2 671 (700-2)	860-2¼ 671 (700-2¼)



SE-2, 16 APR 2026 to 14 MAY 2026

SE-2, 16 APR 2026 to 14 MAY 2026

HIRL Rwy 4-22
MIRL Rwy 10-28
REIL Rwy 10, 22, and 28