

LOC I-RIW <b>110.5</b>	APP CRS <b>284°</b>	Rwy Ldg TDZE Apt Elev	<b>8204</b> <b>5459</b> <b>5516</b>
---------------------------	------------------------	-----------------------------	---

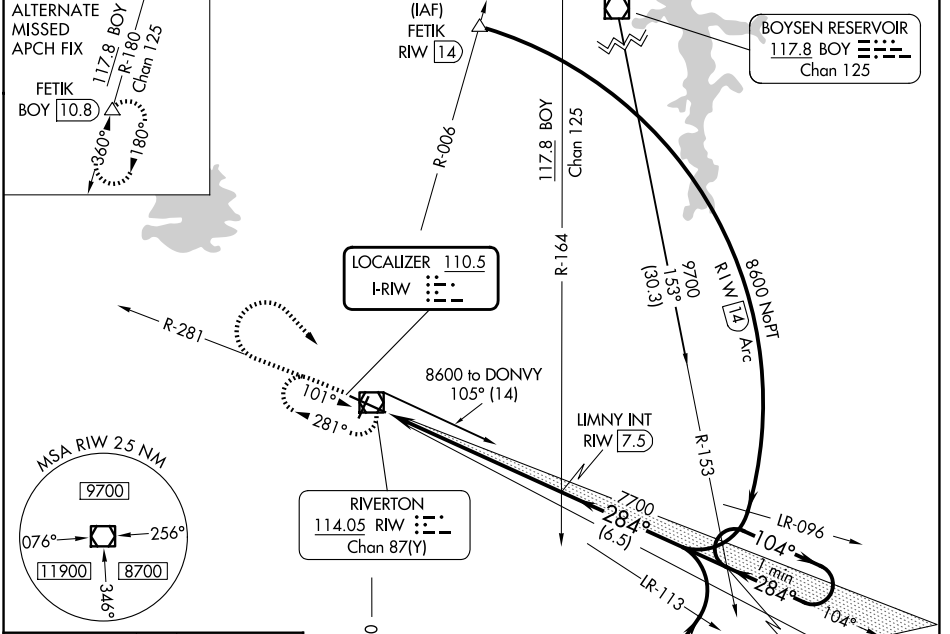
# ILS or LOC RWY 28

CENTRAL WYOMING RGNL (RIW)

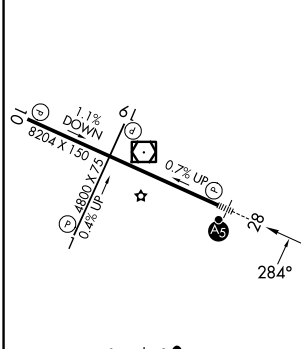
**NA** When local altimeter setting not received, use Lander altimeter setting: increase DA to 5713 feet; increase all MDA 60 feet and S-LOC 28 Cat C and D visibility 1/4 mile. For inop MALSRL, when using Lander altimeter setting, increase S-ILS 28 all Cats visibility to 7/8 mile and S-LOC 28 Cat C and D visibility to 1 3/8 mile. VDP NA when using Lander altimeter setting.

**MALSRL** MISSED APPROACH: Climb to 6800 then climbing right turn to 7700 direct RIW VOR/DME and hold, continue climb-in-hold to 7700.

<b>ASOS</b> <b>121.425</b>	<b>SALT LAKE CENTER</b> <b>133.25 285.6</b>	<b>UNICOM</b> <b>122.8 (CTAF)</b>
-------------------------------	--	--------------------------------------



ELEV 5516	<b>D</b>	TDZE 5459
-----------	----------	-----------



REIL Rws 1, 10 and 19  
MIRL Rwy 1-19  
HIRL Rwy 10-28

FAF to MAP 6.9 NM

Knots	60	90	120	150	180
Min:Sec	6:54	4:36	3:27	2:46	2:18

CATEGORY	A	B	C	D
S-ILS 28	5659-1/2 200 (200-1/2)			
S-LOC 28	5880-1/2 421 (400-1/2)		5880-3/4 421 (400-3/4)	
CIRCLING	6000-1 484 (500-1)		6000-1 1/2 484 (500-1 1/2) 6120-2 604 (700-2)	

NW-1, 16 APR 2026 to 14 MAY 2026

NW-1, 16 APR 2026 to 14 MAY 2026