


WAAS CH 61115 W28A	APP CRS 284°	Rwy Ldg 8204 TDZE 5459 Apt Elev 5516
--	------------------------	--

RNAV (GPS) RWY 28

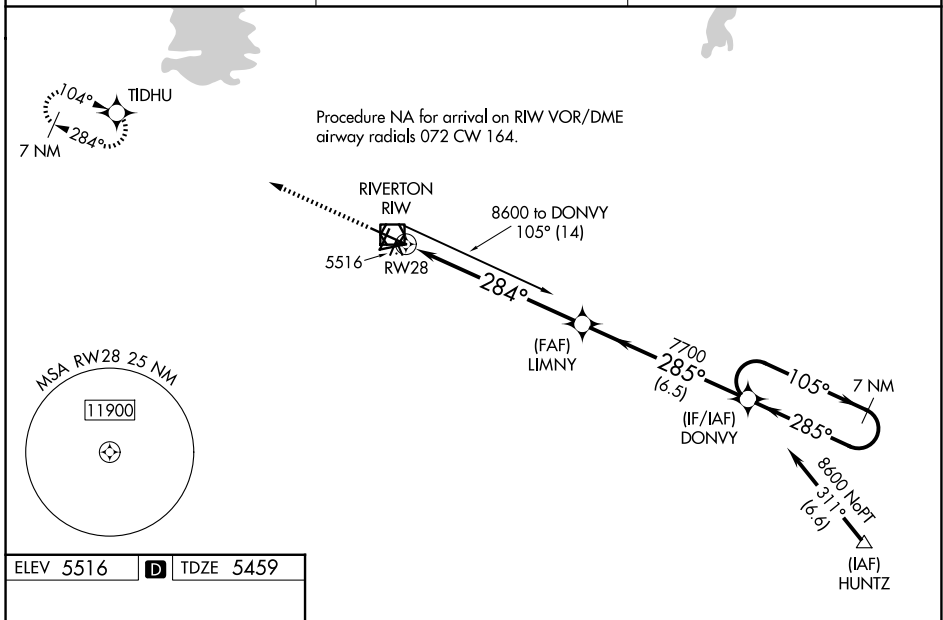
CENTRAL WYOMING RGNL (RIW)

RNP APCH - GPS.

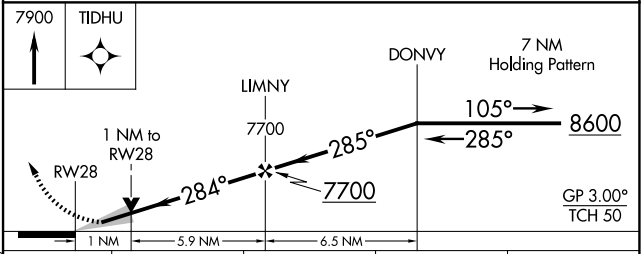
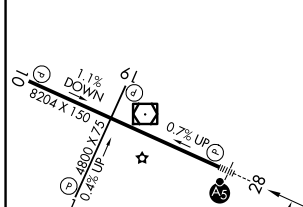
⚠ Baro-VNAV and VDP NA when using Lander altimeter setting. For uncompensated Baro-VNAV systems, LNAV/VNAV NA below -27°C or above 48°C. For inop MALSR, increase LNAV/VNAV all Cats visibility to ¾ mile and LNAV Cat C and D visibility to 1 mile. When local altimeter setting not received, use Lander altimeter setting: increase LPV DA to 5713 feet, LNAV/VNAV DA to 5763 and all visibilities ½ mile; increase all MDA 60 feet and LNAV Cat C and D visibility ½ mile. For inop MALSR, when using Lander altimeter setting, increase LPV all Cats visibility to ¾ mile and LNAV/VNAV all Cats visibility to 1 mile.

MALSR  MISSED APPROACH: Climb to 7900 direct TIDHU and hold.


ASOS 121.425	SALT LAKE CENTER 133.25 285.6	UNICOM 122.8 (CTAF) 
------------------------	---	---





ELEV 5516	D	TDZE 5459
-----------	----------	-----------



	CATEGORY	A	B	C	D
LPV	DA		5659-½	200 (200-½)	
LNAV/VNAV	DA		5709-½	250 (200-½)	
LNAV	MDA	5820-½	361 (400-½)	5820-⅝	361 (400-⅝)
CIRCLING		6000-1	484 (500-1)	6000-1½	6120-2
				484 (500-1½)	604 (700-2)

REIL Rwy 1, 10, and 19 

MIRL Rwy 1-19 

HIRL Rwy 10-28 

NW-1, 16 APR 2026 to 14 MAY 2026

NW-1, 16 APR 2026 to 14 MAY 2026