

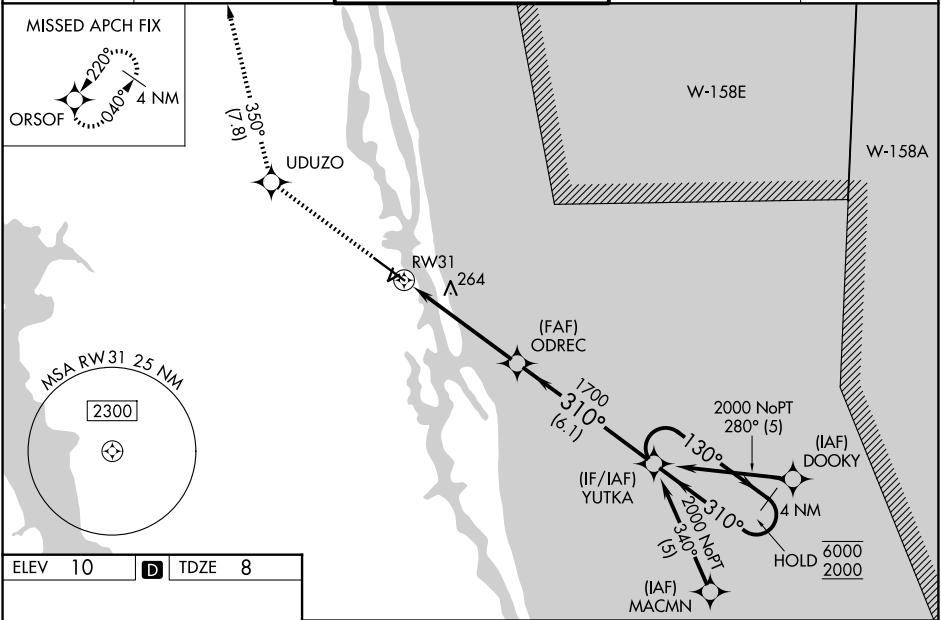
WAAS CH 77727 W31A	APP CRS 310°	Rwy Ldg 5925 TDZE 8 Apt Elev 10
--	------------------------	--

RNAV (GPS) RWY 31

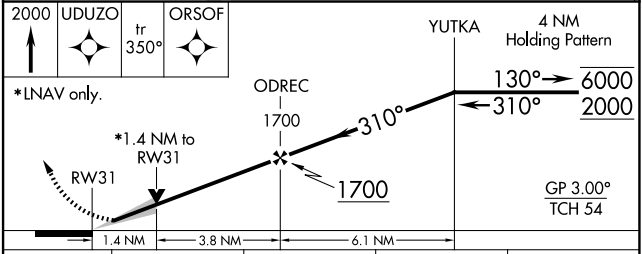
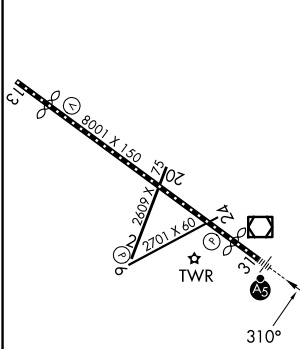
ST AUGUSTINE (SGJ)

RNP APCH.		MALSR	MISSED APPROACH: Climb to 2000 direct UDUZO and on track 350° to ORSOF and hold.
Circling Rwy 2, 6 NA at night. For uncompensated Baro-VNAV systems, LNAV/VNAV NA below -18°C or above 54°C. For inop ALS, increase LNAV/VNAV all Cats visibility to 7/8 SM and LNAV Cat C/D visibility to 1 3/8 SM.			

ATIS 119.625	JACKSONVILLE APP CON 120.75	ST AUGUSTINE TOWER ★ 127.625 (CTAF) 269.475	GND CON 121.175 251.125	UNICOM 122.95
------------------------	---------------------------------------	---	-----------------------------------	-------------------------



ELEV 10	D	TDZE 8
---------	----------	--------



CATEGORY	A	B	C	D
LPV DA		218-1/2	210 (300-1/2)	
LNAV/VNAV DA		292-1/2	284 (300-1/2)	
LNAV MDA	520-1/2	512 (600-1/2)	520-1	512 (600-1)
CIRCLING	520-1 510 (600-1)	580-1 570 (600-1)	680-1 3/4 670 (700-1 3/4)	780-2 1/2 770 (800-2 1/2)

SE-3, 16 APR 2026 to 14 MAY 2026

SE-3, 16 APR 2026 to 14 MAY 2026