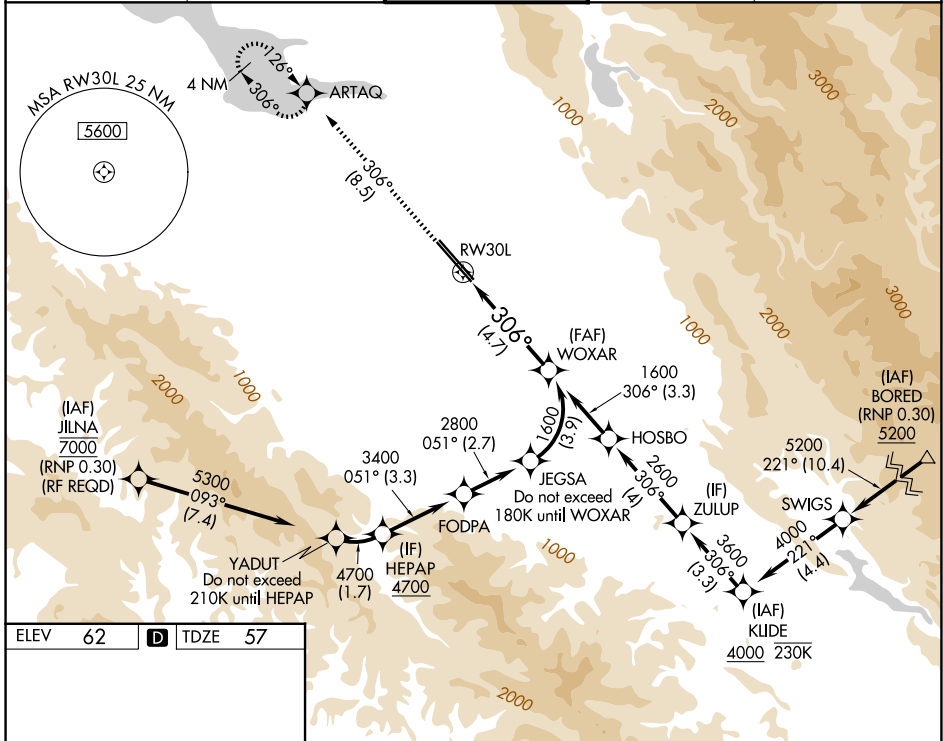


APP CRS	Rwy Ldg	7614
306°	TDZE	57
	Apt Elev	62

RNAV (RNP) Z RWY 30L

NORMAN Y MINETA SAN JOSE INTL (SJC)

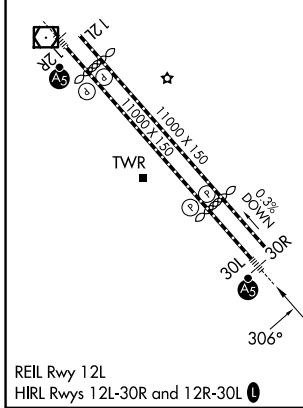
RNP AR APCH.		MALSR		MISSED APPROACH: Climb to 2000 on track 306° to ARTAQ and hold.	
<p>▼ For uncompensated Baro-VNAV systems, procedure NA below 1°C or above 54°C. For inop ALS, increase RNP 0.10 all Cats visibility to RVR 5500 and increase RNP 0.30 all Cats visibility to 1½ SM.</p>					
D-ATIS	NORCAL APP CON	SAN JOSE TOWER*	GND CON	UNICOM	
126.95	120.1 290.25	124.0 (CTAF) 0 257.6	121.7	122.95	



SW-2, 16 APR 2026 to 14 MAY 2026

SW-2, 16 APR 2026 to 14 MAY 2026

ELEV	62	D	TDZE	57
------	-----------	----------	------	-----------



2000 ARTAQ VGSI and RNAV glidepath not coincident (VGSI Angle 3.00/TCH 70). WOXAR 1600

tr 306°

See planview for multiple IF locations.

RW30L

306°

4.7 NM

GP 3.00° TCH 54

CATEGORY	A	B	C	D
RNP 0.10 DA		430/35	373 (400-5%)	
RNP 0.20 DA		464/40	407 (500-3%)	
RNP 0.30 DA		541/50	484 (500-1)	

AUTHORIZATION REQUIRED