

WAAS CH 69501 W12B	APP CRS 126°	Rwy Ldg TDZE 44 Apt Elev 62	8831
--	------------------------	---	-------------

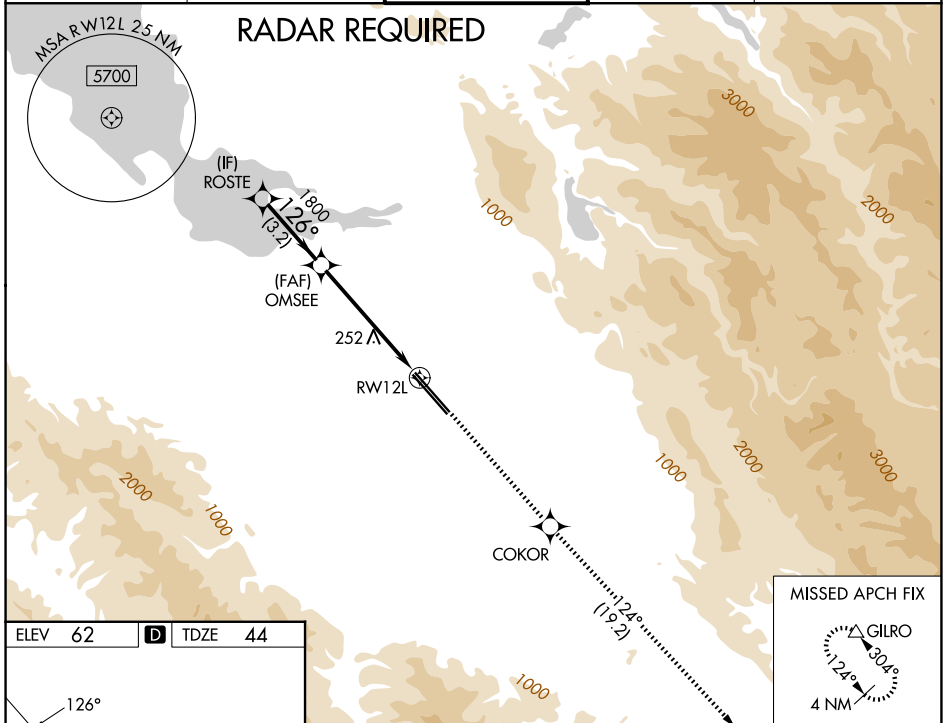
RNAV (GPS) Y RWY 12L

NORMAN Y MINETA SAN JOSE INTL (SJC)

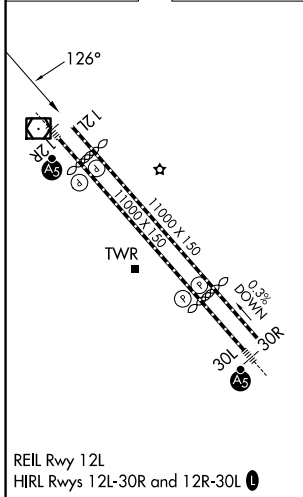
▽ For uncompensated Baro-VNAV systems, LNAV/VNAV NA below -1°C (31°F) or above 54°C (130°F). DME/DME RNP-0.3 NA.

MISSED APPROACH: Climb to 4600 direct COKOR and on track 124° to GILRO and hold.

D-ATIS 126.95	NORCAL APP CON 120.1 290.25	SAN JOSE TOWER * 124.0 (CTAF) 0 257.6	GND CON 121.7	UNICOM 122.95
-------------------------	---------------------------------------	---	-------------------------	-------------------------



ELEV 62	D	TDZE 44
----------------	----------	----------------



SAN JOSE, CALIFORNIA
Amdt 3A 21JUL16

VGSI and RNAV glidepath not coincident (VGSI Angle 3.00/TCH 70).

ROSTE	OMSEE	4600	COKOR	GILRO
2300	1800	↑	⊙	△
			Tr 124°	
*LNAV only				
GP 3.00° TCH 57	3.2 NM	4.1 NM	1.3 NM	
CATEGORY	A	B	C	D
LPV	DA	294-3/4	250 (300-3/4)	
LNAV/ VNAV	DA	341-1	297 (300-1)	
LNAV MDA	520-1	476 (500-1)	520-13/8	476 (500-13/8)

NORMAN Y MINETA SAN JOSE INTL (SJC)
37°22'N-121°56'W
RNAV (GPS) Y RWY 12L

SW-2, 16 APR 2026 to 14 MAY 2026

SW-2, 16 APR 2026 to 14 MAY 2026