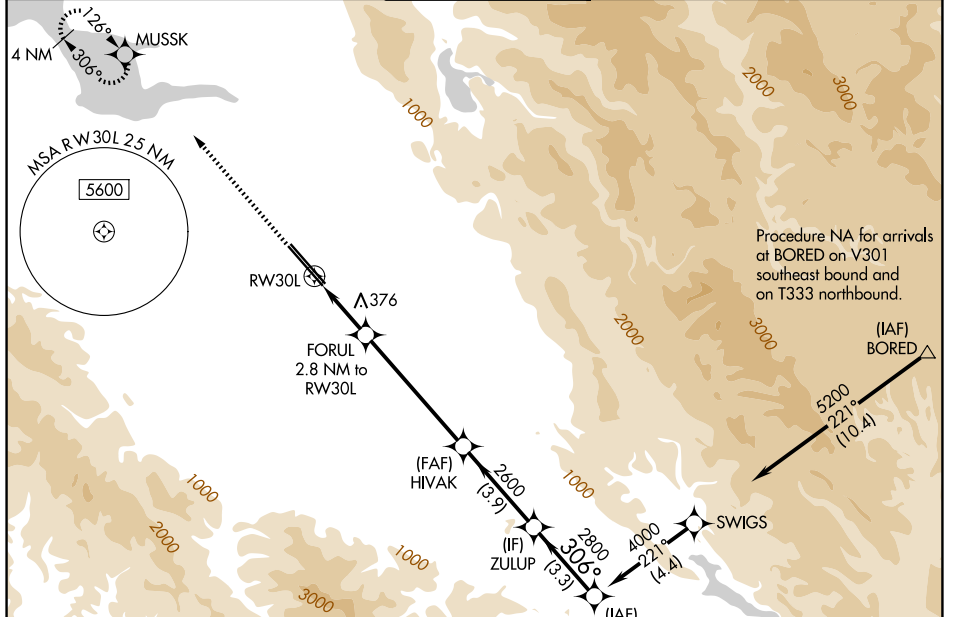


WAAS CH <b>97306</b> <b>W30A</b>	APP CRS <b>306°</b>	Rwy Ldg 30L <b>7614</b> 30R <b>7597</b>	TDZE <b>57</b> <b>55</b>	Apt Elev <b>62</b> <b>62</b>
--	------------------------	---	--------------------------------	------------------------------------

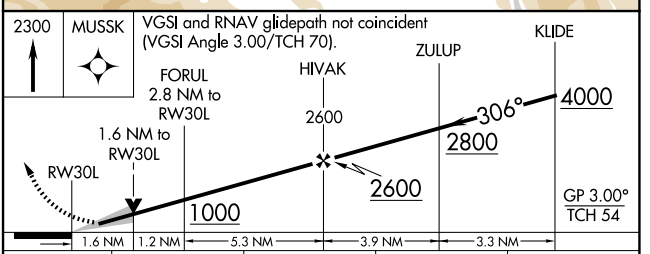
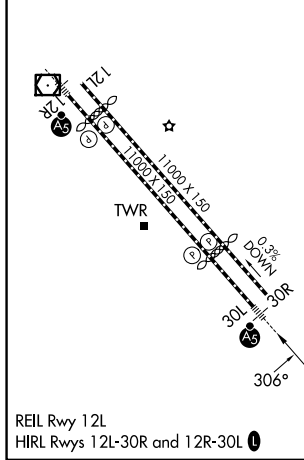
# RNAV (GPS) Y RWY 30L

NORMAN Y MINETA SAN JOSE INTL (SJC)

RNP APCH-GPS.		MALSR Rwy 30L		MISSED APPROACH: Climb to 2300 direct MUSSK and hold.	
<p>▼ For uncompensated Baro-VNAV systems, LNAV/VNAV NA below 1°C or above 54°C. For inop ALS, increase LNAV/VNAV all Cats visibility to 1½ SM. * RVR 1800 authorized with use of FD or AP or HUD to DA.</p>		<p>D-ATIS <b>126.95</b></p>		<p>NORCAL APP CON <b>120.1 290.25</b></p>	
<p>SAN JOSE TOWER * <b>124.0 (CTAF) 257.6</b></p>		<p>GND CON <b>121.7</b></p>		<p>UNICOM <b>122.95</b></p>	



ELEV 62	<b>D</b>	TDZE 30L 57
		TDZE 30R 55



CATEGORY	A	B	C	D
LPV DA*		257/24	200 (200-½)	
LNAV/VNAV DA		540/50	483 (500-1)	
LNAV MDA	640/24	583 (600-½)	640-1¼	583 (600-1¼)
SIDESTEP 30R	640-1 585 (600-1)			

SW-2, 16 APR 2026 to 14 MAY 2026

SW-2, 16 APR 2026 to 14 MAY 2026