

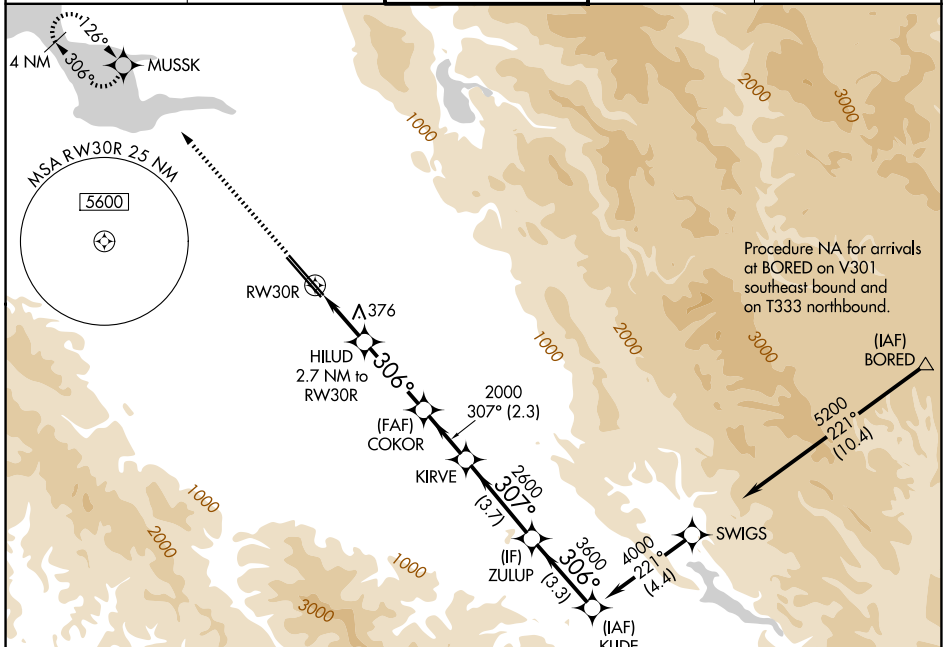
WAAS CH 72901 W30B	APP CRS 306°	Rwy Ldg 7597 TDZE 55 Apt Elev 62
--	------------------------	---

RNAV (GPS) Y RWY 30R

NORMAN Y MINETA SAN JOSE INTL (SJC)

RNP APCH-GPS. ▼ For uncompensated Baro-VNAV systems, LNAV/VNAV NA below -1°C or above 54°C.	MISSED APPROACH: Climb to 2300 direct MUSSK and hold.
--	---

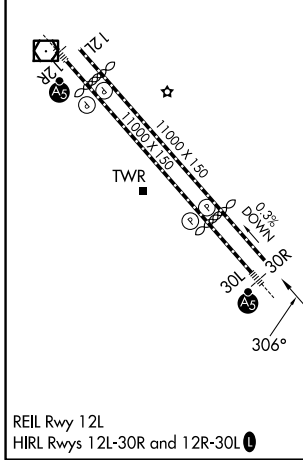
D-ATIS 126.95	NORCAL APP CON 120.1 290.25	SAN JOSE TOWER ★ 124.0 (CTAF) 0 257.6	GND CON 121.7	UNICOM 122.95
-------------------------	---------------------------------------	---	-------------------------	-------------------------



SW-2, 16 APR 2026 to 14 MAY 2026

SW-2, 16 APR 2026 to 14 MAY 2026

ELEV 62	D	TDZE 55
---------	----------	---------



2300	MUSSK	VGSi and RNAV glidepath not coincident (VGSi Angle 3.00/TCH 69).						
		HILUD 2.7 NM to RWY30R	COKOR	KIRVE	ZULUP	KLIDE		
		1.6 NM to RWY30R	2000	2600	3600	4000		
		960	2000	2600	3600	4000		
		1.6 NM	1.1 NM	3.2 NM	2.3 NM	3.7 NM	3.3 NM	
		A		B		C		D
LPV	DA	255-3/4		200 (200-3/4)				
LNAV/VNAV	DA	541-13/8		486 (500-13/8)				
LNAV	MDA	640-1	585 (600-1)		640-13/4	585 (600-13/4)		
CIRCLING		640-1	700-1		700-13/4	700-2		
		578 (600-1)	638 (700-1)		638 (700-13/4)	638 (700-2)		