

(SILCN.SILCN6) 22195

SILCN SIX ARRIVAL (RNAV)

NORMAN Y MINETA SAN JOSE INTL (SJC)

AL-693 (FAA)

SAN JOSE, CALIFORNIA

RNAV 1 - DME/DME/IRU or GPS

RADAR required

OAKLAND CENTER

134.55 290.5

NORCAL APP CON

124.525 348.675

D-ATIS

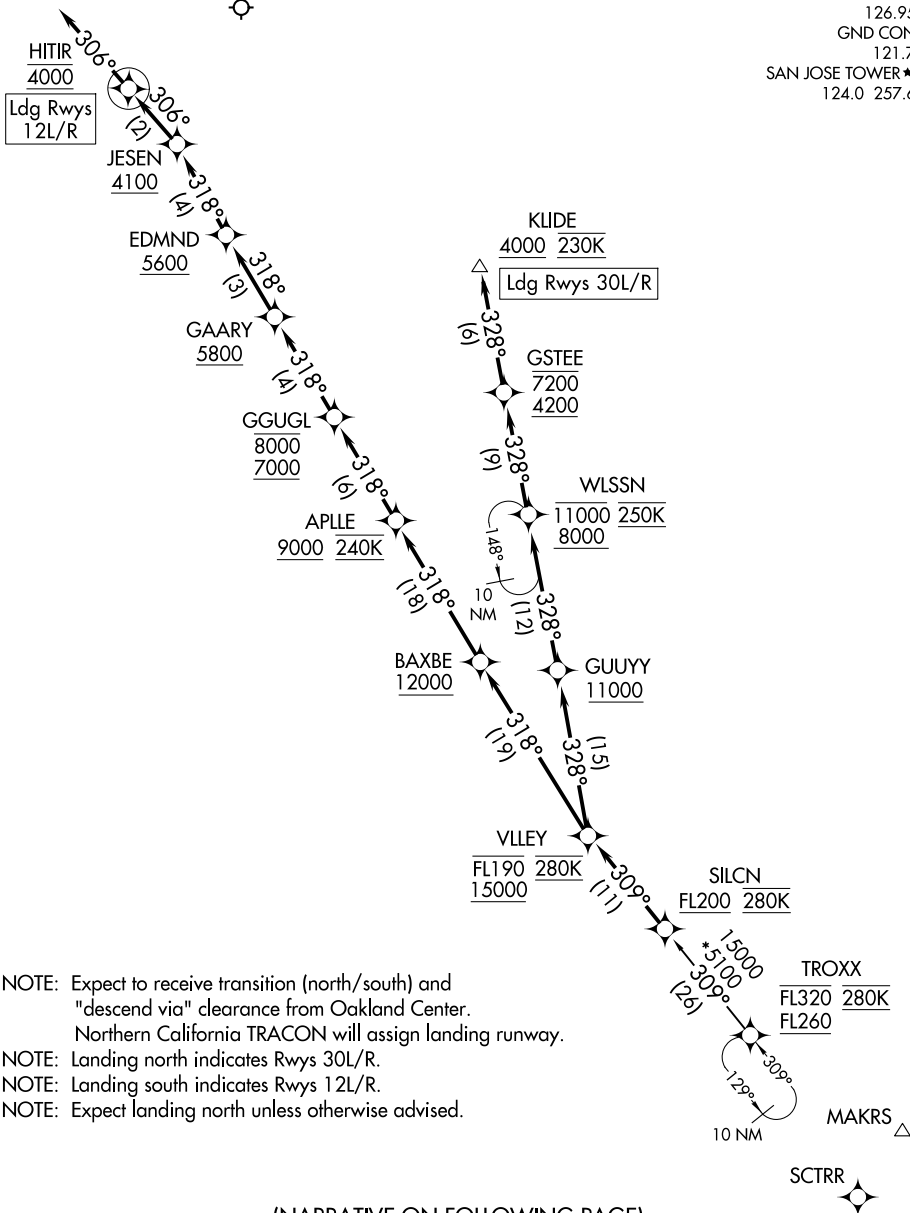
126.95

GND CON

121.7

SAN JOSE TOWER ★

124.0 257.6



NOTE: Expect to receive transition (north/south) and "descend via" clearance from Oakland Center.
 Northern California TRACON will assign landing runway.
 NOTE: Landing north indicates Rws 30L/R.
 NOTE: Landing south indicates Rws 12L/R.
 NOTE: Expect landing north unless otherwise advised.

NOTE: Chart not to scale.

(NARRATIVE ON FOLLOWING PAGE)

SW-2, 16 APR 2026 to 14 MAY 2026

SW-2, 16 APR 2026 to 14 MAY 2026

SILCN SIX ARRIVAL (RNAV)

(SILCN.SILCN6) 14JUL22

SAN JOSE, CALIFORNIA

NORMAN Y MINETA SAN JOSE INTL (SJC)

ARRIVAL ROUTE DESCRIPTION

TROXX TRANSITION (TROXX.SILCN6)

From SILCN on track 309° to cross VLEY between 15000 and FL190 and at 280K.

SOUTH TRANSITION LANDING RUNWAYS 12L/R: From VLEY on track 318° to cross BAXBE at or above 12000, then on track 318° to cross APLLE at or above 9000 and at 240K, then on track 318° to cross GGUGL between 7000 and 8000, then on track 318° to cross GAARY at or above 5800, then on track 318° to cross EDMND at or above 5600, then on track 318° to cross JESEN at or above 4100, then on track 306° to cross HITIR at 4000, then on track 306°. Expect RADAR vectors to final approach course.

NORTH TRANSITION LANDING RUNWAYS 30L/R: From VLEY on track 328° to cross GUUYY at or above 11000, then on track 328° to cross WLSSN between 8000 and 11000 and at 250K, then on track 328° to cross GSTEE between 4200 and 7200, then on track 328° to cross KLIDE at or above 4000 and at 230K. Expect assigned instrument approach or RADAR vectors to final approach course.

SW-2, 16 APR 2026 to 14 MAY 2026

SW-2, 16 APR 2026 to 14 MAY 2026