


LOC/DME I-MVY 108.7 Chan 24	APP CRS 236°	Rwy Ldg TDZE Apt Elev	5504 63 67
--	------------------------	-----------------------------	---------------------------------------

ILS or LOC RWY 24

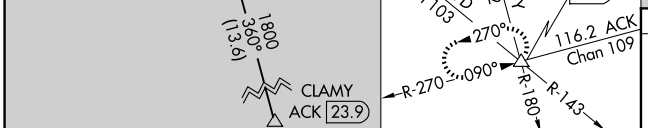
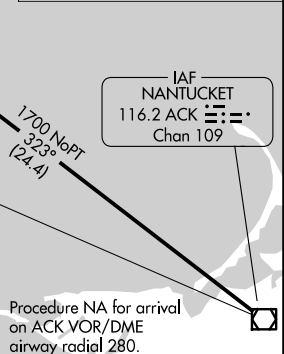
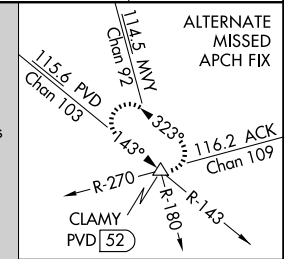
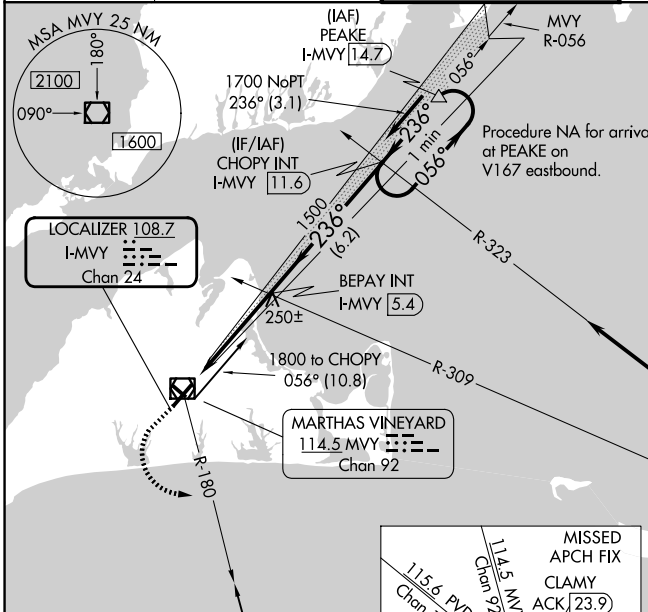
MARTHA'S VINEYARD (MVY)

⚠ VDP NA with Hyannis altimeter setting. When local altimeter setting not received, use Hyannis altimeter setting and increase all DA to 317 feet and all MDA 60 feet; increase S-LOC Cats C and D visibility to RVR 5000, Circling Cat C and D visibility 1/4 SM. For inoperative MALS R when using Hyannis altimeter setting, increase S-LOC Cats C and D visibility to 1 3/8 mile. Circling Rwy 15 NA at night. ** RVR 1800 authorized with use of FD or AP or HUD to DA (NA when using Hyannis altimeter setting).

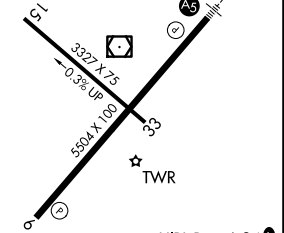
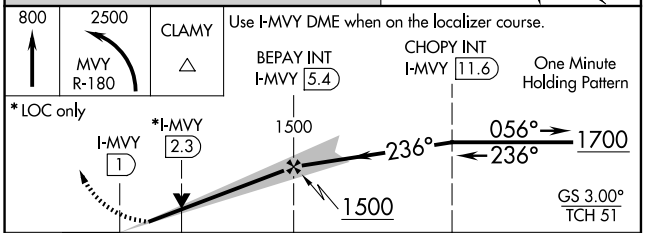
MALS R


MISSED APPROACH:
Climb to 800 then climbing left turn to 2500 on MVY VOR/DME R-180 to CLAMY INT/ACK 23.9 DME and hold.

ATIS 126.25	BOSTON APP CON 133.75	VINEYARD TOWER ★ 121.4 (CTAF) 0	GND CON 124.35	UNICOM 122.95
-----------------------	---------------------------------	---	--------------------------	-------------------------



ELEV 67	D	TDZE 63
---------	----------	---------



CATEGORY	A	B	C	D
S-ILS 24**	263/24 200 (200-1/2)			
S-LOC 24	500/24	437 (500-1/2)	500/40	437 (500-3/4)
CIRCLING	500-1 433 (500-1)	540-1 473 (500-1)	700-1 3/4 633 (700-1 3/4)	780-2 1/4 713 (800-2 1/4)

FAF to MAP 4.4 NM					
Knots	60	90	120	150	180
Min:Sec	4:24	2:56	2:12	1:46	1:28

NE-1, 16 APR 2026 to 14 MAY 2026

NE-1, 16 APR 2026 to 14 MAY 2026