

WAAS CH 42601 W06A	APP CRS 056°	Rwy Ldg TDZE Apt Elev	5504 58 67
--	------------------------	-----------------------------	---------------------------------------

RNAV (GPS) RWY 6

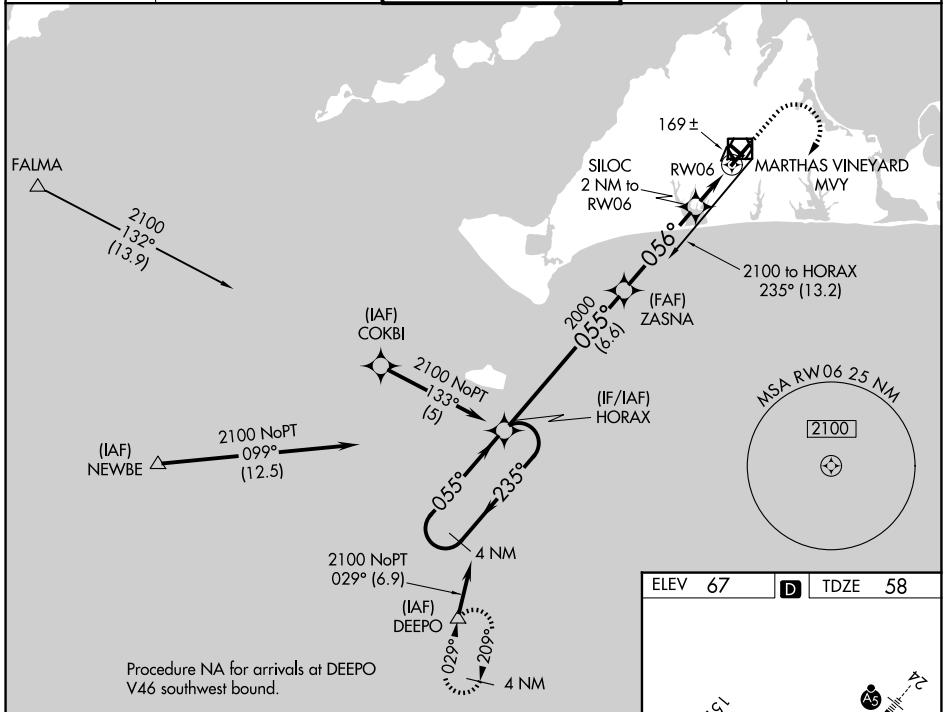
MARTHA'S VINEYARD (MVY)

RNP APCH.

▼ Rwy 6 helicopter visibility reduction below ¼ SM NA. VDP and Baro-VNAV NA when using Hyannis altimeter setting. For uncompensated Baro-VNAV systems, LNAV/VNAV NA below -15°C or above 43°C. When local altimeter setting not received, use Hyannis altimeter setting and increase LPV DA to 362 feet and all Cats visibility by ¼ SM, increase LNAV/VNAV DA to 408 feet and all Cats visibility ½ SM; increase all MDAs 60 feet and Cats C and D visibility ¼ SM. Circling Rwy 15 NA at night.

MISSED APPROACH:
Climb to 800 then climbing right turn to 3000 direct DEEPO and hold.

ATIS 126.25	BOSTON APP CON 133.75	VINEYARD TOWER ★ 121.4 (CTAF) 0	GND CON 124.35	UNICOM 122.95
-----------------------	---------------------------------	---	--------------------------	-------------------------



NE-1, 16 APR 2026 to 14 MAY 2026

NE-1, 16 APR 2026 to 14 MAY 2026

ELEV 67	D	TDZE 58
---------	---	---------

HIRL Rwy 6-24 0
MIRL Rwy 15-33 0
REIL Rwy 6
REIL Rwy 33 0

CATEGORY	4 NM Holding Pattern	HORAX			
	2100 ← 235°	→ 055°			
	GP 3.00° TCH 50	→ 055°			
		→ 056°			
		→ 056°			
	6.6 NM	4 NM	1 NM	1 NM	
LPV DA	A	B	C	D	
LNAV/VNAV DA		308-¾	250 (300-¾)		
LNAV MDA		354-1	296 (300-1)		
CIRCLING	500-1	540-1	700-1¾	780-2¼	
	433 (500-1)	473 (500-1)	633 (700-1¾)	713 (800-2¼)	