

VOR/DME M ^{VY}	APP CRS	Rwy Ldg	5504
114.5	050°	TDZE	58
Chan 92		Apt Elev	67

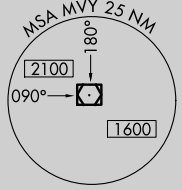
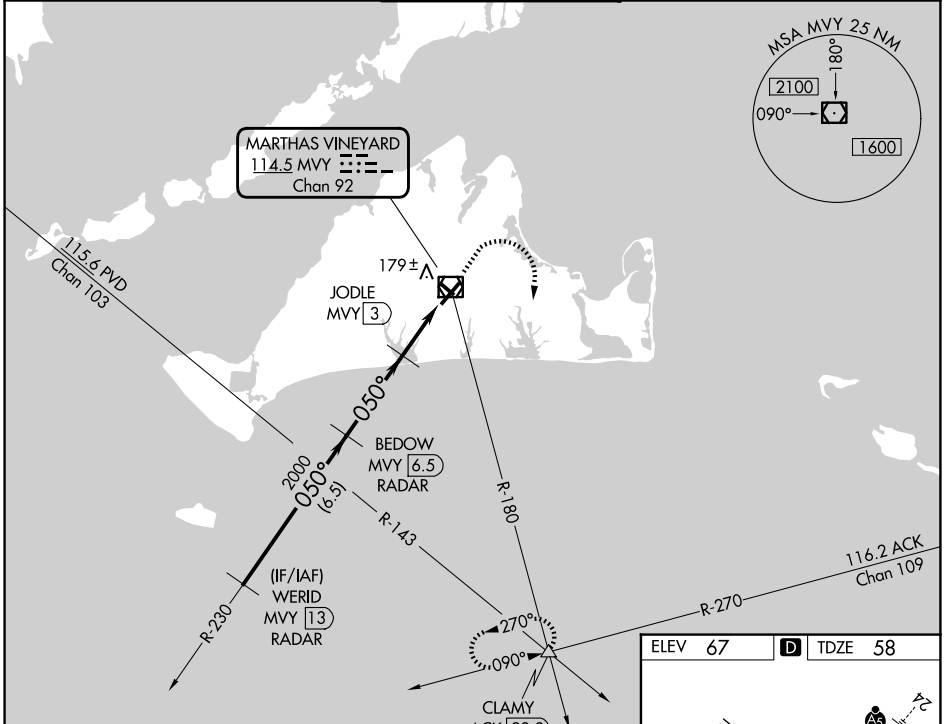
VOR RWY 6

MARTHA'S VINEYARD (M^{VY})

▼ DME required. Rwy 6 helicopter visibility reduction below 3/4 SM NA.
 VDP NA with Hyannis altimeter setting. When local altimeter setting not received, use Hyannis altimeter setting and increase all MDA 60 feet;
 ▲ increase S-6 Cats C and D visibility 1/4 mile. Night landing: Rwy 15 NA.

MISSED APPROACH: Climb to 500 then climbing right turn to 2500 via M^{VY} VOR/DME R-180 to CLAMY INT/ACK 23.9 DME and hold.

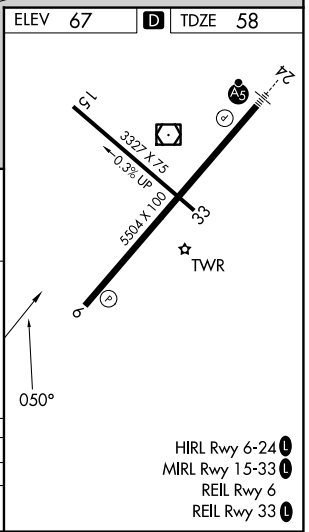
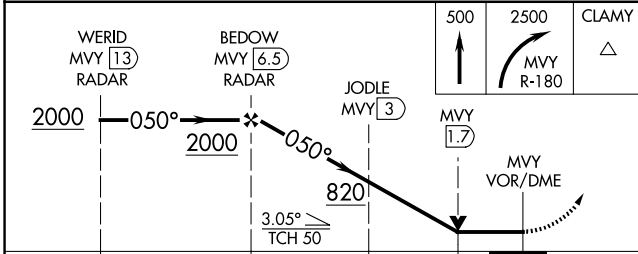
ATIS 126.25	BOSTON APP CON 133.75	VINEYARD TOWER ★ 121.4 (CTAF) 0	GND CON 124.35	UNICOM 122.95
-----------------------	---------------------------------	---	--------------------------	-------------------------



NE-1, 16 APR 2026 to 14 MAY 2026

NE-1, 16 APR 2026 to 14 MAY 2026

RADAR REQUIRED



CATEGORY	A	B	C	D
S-6	440-1	382 (400-1)	440-1 1/8	382 (400-1 1/8)
CIRCLING	500-1 433 (500-1)	540-1 473 (500-1)	700-1 3/4 633 (700-1 3/4)	780-2 1/4 713 (800-2 1/4)

HIRL Rwy 6-24 0
 MIRL Rwy 15-33 0
 REIL Rwy 6
 REIL Rwy 33 0