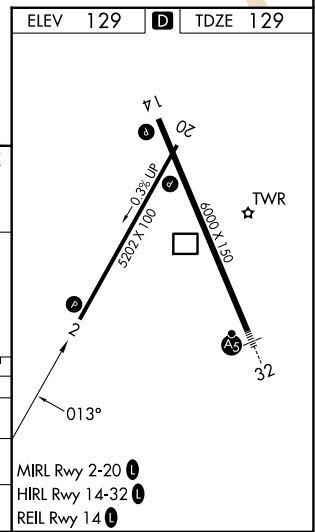
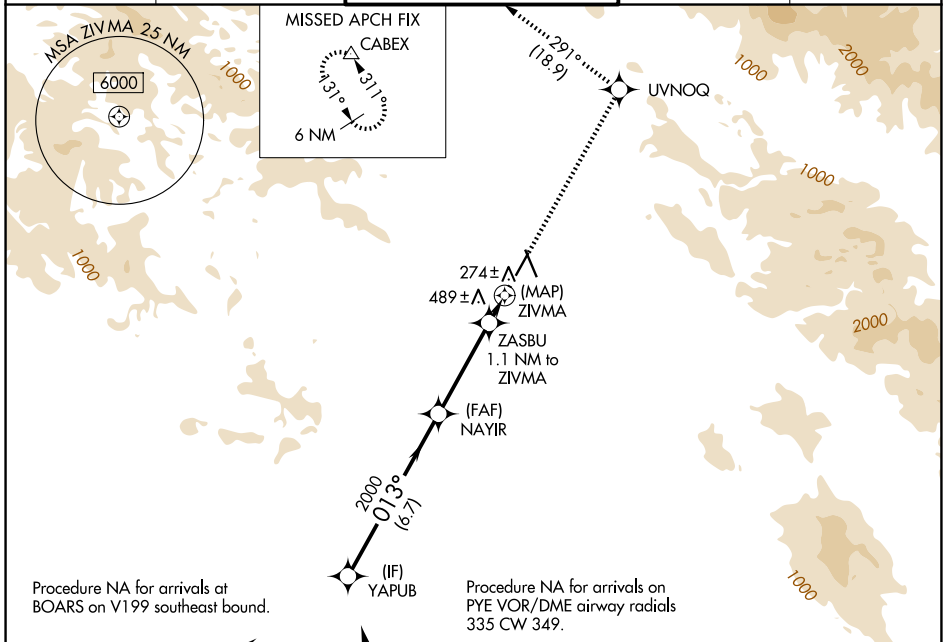


WAAS CH <b>69230</b> <b>W02A</b>	APP CRS <b>013°</b>	Rwy Ldg TDZE <b>129</b> Apt Elev <b>129</b>	<b>4802</b>
--	------------------------	---	-------------

# RNAV (GPS) RWY 2

CHARLES M SCHULZ/SONOMA COUNTY (STS)

RNP APCH. ▼ ▲ Rwy 2 helicopter visibility reduction below 3/4 SM NA.		MISSED APPROACH: Climb to 6000 direct UVNOQ and on track 291° to CABEX and hold, continue climb-in-hold to 6000.		
ATIS <b>120.55</b>	OAKLAND CENTER <b>127.8 353.5</b>	SANTA ROSA TOWER★ <b>118.5 (CTAF) 0 363.0</b>	GND CON <b>121.9</b>	UNICOM <b>122.95</b>



YAPUB	NAYIR	ZASBU 1.1 NM to ZIVMA	ZIVMA	UVNOQ	CABEX
3000	2000	800		6000	
6.7 NM	3.7 NM	1.1 NM	0.9 NM		
013°	013°	013°	013°	291°	291°
CATEGORY A		CATEGORY B		CATEGORY C	
LP MDA	500-1		371 (400-1)		
LNAV MDA	660-1	531 (600-1)	660-1½	531 (600-1½)	
CIRCLING	660-1 531 (600-1)	680-1 551 (600-1)	1080-3 951 (1000-3)	1420-3 1291 (1300-3)	

SW-2, 16 APR 2026 to 14 MAY 2026

SW-2, 16 APR 2026 to 14 MAY 2026