

LOC I-GNJ 111.75	APP CRS 226°	Rwy Ldg 7004 TDZE 979 Apt Elev 979
----------------------------	------------------------	---

ILS or LOC RWY 22

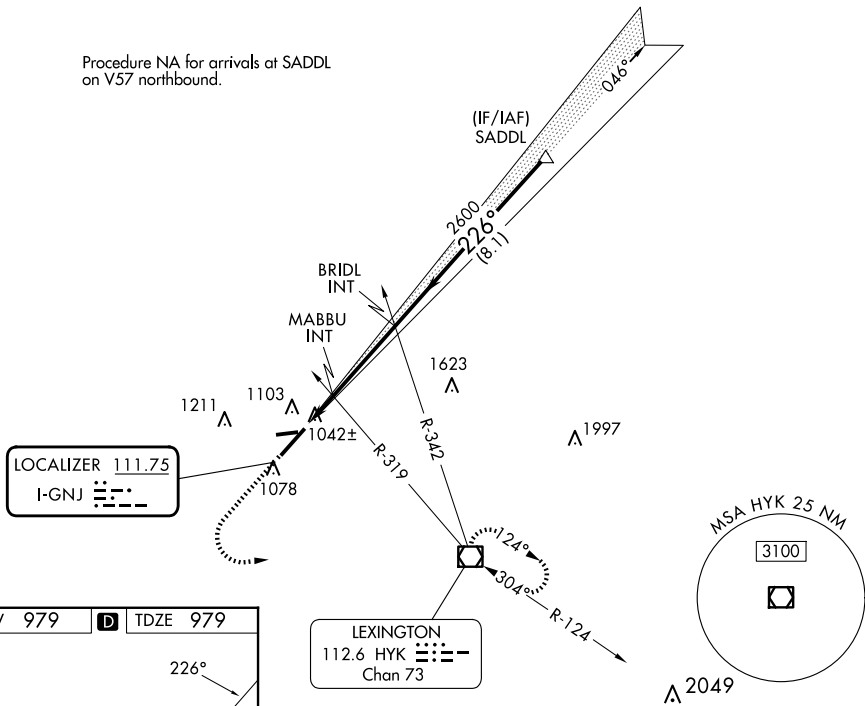
BLUE GRASS (LEX)

⚠ When local altimeter setting not received, use Frankfort altimeter setting: increase S-ILS 22 DA to 1241 feet and all visibilities 1/8 SM; increase all MDAs 80 feet and visibility Cats C and D 1/4 SM.

⚠ MISSED APPROACH: Climb to 1400 then climbing left turn to 3100 direct HYK VOR/DME and hold, continue climb-in-hold to 3100.

ATIS 126.3	LEXINGTON APP CON 120.15 259.3 (040°-220°) 120.75 298.9 (221°-039°)	LEXINGTON TOWER 119.1 257.8	GND CON 121.9	CLNC DEL 132.35
----------------------	---	---------------------------------------	-------------------------	---------------------------

Procedure NA for arrivals at SADDL on V57 northbound.

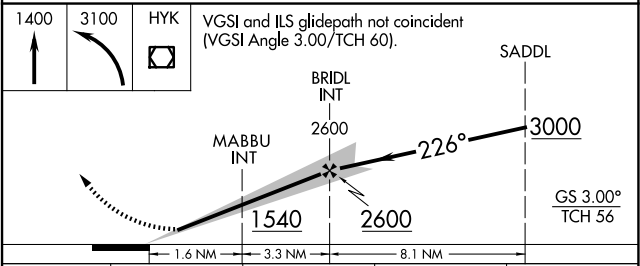


ELEV 979	D	TDZE 979
----------	----------	----------

TDZ/CL Rwy 4
REIL Rwy 9, 22 and 27
HIRL Rwy 4-22
MIRL Rwy 9-27

FAF to MAP 4.9 NM

Knots	60	90	120	150	180
Min:Sec	4:54	3:16	2:27	1:58	1:38



CATEGORY	A	B	C	D
S-ILS 22	1179-3/4 200 (200-3/4)			
S-LOC 22	1360-1	381 (400-1)	1360-1 1/8	381 (400-1 1/8)
<input checked="" type="checkbox"/> CIRCLING	1420-1 441 (500-1)	1440-1 461 (500-1)	1520-1 1/2 541 (600-1 1/2)	1600-2 621 (700-2)

SE-1, 16 APR 2026 to 14 MAY 2026

SE-1, 16 APR 2026 to 14 MAY 2026