

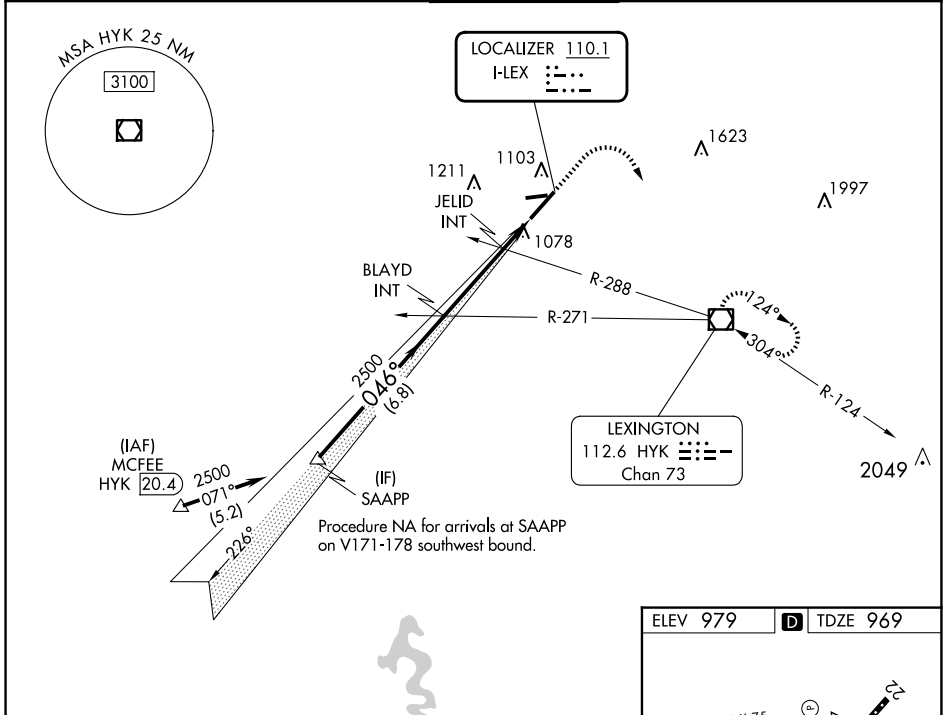
LOC I-LEX 110.1	APP CRS 046°	Rwy Ldg TDZE Apt Elev	7004 969 979
---------------------------	------------------------	-----------------------------	---

ILS or LOC RWY 4

BLUE GRASS (LEX)

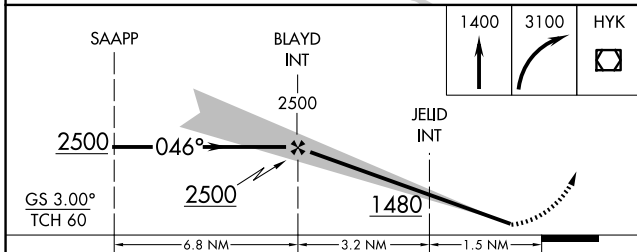
DME required for procedure entry.		MALS R	MISSED APPROACH: Climb to 1400 then climbing right turn to 3100 direct HYK VOR/DME and hold, continue climb-in-hold to 3100.
<p>▼ For inop ALS, increase S-LOC 4 Cats C and D visibility to RVR 5500. When local altimeter setting not received, use Frankfort altimeter setting: increase S-ILS 4 DA to 1231 feet and all visibilities to RVR 2000; increase all MDAs 80 feet and S-LOC 4 visibility Cats C and D to RVR 4500 and increase visibility Cats C and D ¼ SM.</p>			

ATIS 126.3	LEXINGTON APP CON 120.15 259.3 (040°-220°) 120.75 298.9 (221°-039°)	LEXINGTON TOWER 119.1 257.8	GND CON 121.9	CLNC DEL 132.35
----------------------	---	---------------------------------------	-------------------------	---------------------------



SE-1, 16 APR 2026 to 14 MAY 2026

SE-1, 16 APR 2026 to 14 MAY 2026



ELEV 979	TDZE 969
TDZ/CL Rwy 4 REIL Rwys 9, 22 and 27 HIRL Rwy 4-22 MIRL Rwy 9-27	
FAF to MAP 4.7 NM	
Knots	60 90 120 150 180
Min:Seq	4:42 3:08 2:21 1:53 1:34

CATEGORY	A	B	C	D
S-ILS 4	1169/18		200 (200-½)	
S-LOC 4	1340/24	371 (400-½)	1340/35	371 (400-¾)
CIRCLING	1420-1 441 (500-1)	1440-1 461 (500-1)	1520-1½ 541 (600-½)	1600-2 621 (700-2)