

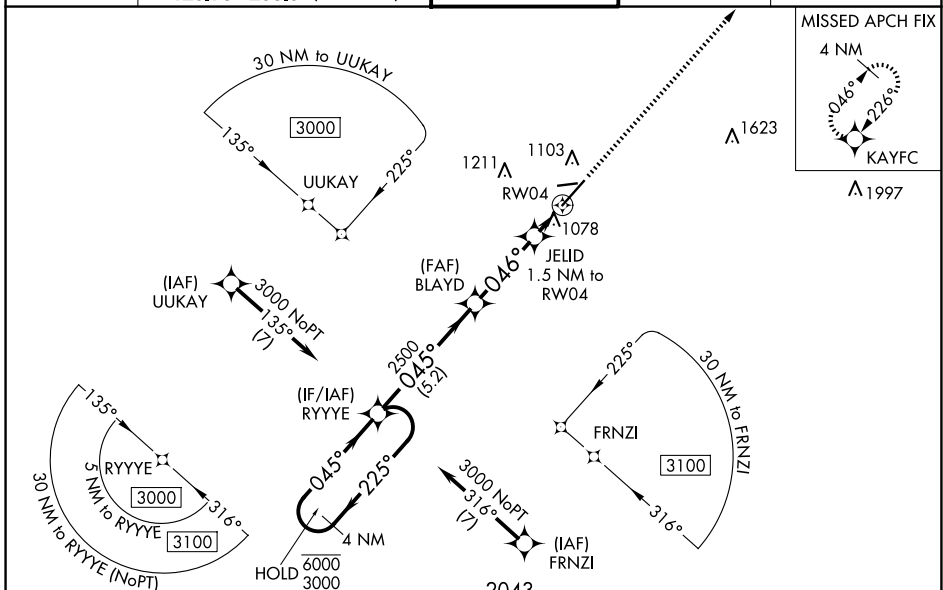
WAAS CH 70401 W04A	APP CRS 046°	Rwy Ldg TDZE Apt Elev	7004 969 980
--	------------------------	-----------------------------	---

RNAV (GPS) RWY 4

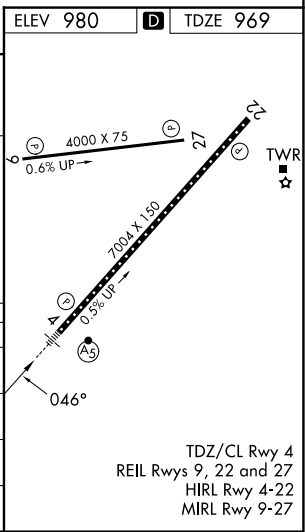
BLUE GRASS (LEX)

RNP APCH - GPS.	MALSR	MISSED APPROACH: Climb to 3000 direct KAYFC and hold.
<p>⚠ For uncompensated Baro-VNAV systems, LNAV/VNAV NA below -13°C or above 54°C. For inop ALS, increase LNAV/VNAV all Cats visibility to RVR 5500, and LNAV all Cats visibility to RVR 5500.</p>		

ATIS 126.3	LEXINGTON APP CON 120.15 259.3 (040°-220°) 120.75 298.9 (221°-039°)	LEXINGTON TOWER 119.1 257.8	GND CON 121.9	CLNC DEL 132.35
----------------------	---	---------------------------------------	-------------------------	---------------------------



4 NM Holding Pattern	RYYYE	BLAYD	JELID	RW04
6000 3000	2500	2500	1480	
GP 3.00° TCH 60				
	5.2 NM	3.2 NM	1.5 NM	
CATEGORY	A	B	C	D
LPV DA		1169/18	200 (200-½)	
LNAV/VNAV DA		1340/35	371 (400-¾)	
LNAV MDA	1340/24	371 (400-½)	1340/35	371 (400-¾)
CIRCLING	1420-1 440 (500-1)	1440-1 460 (500-1)	1520-1½ 540 (600-1½)	1600-2 620 (700-2)



TDZ/CL Rwy 4
REIL Rwys 9, 22 and 27
HIRL Rwy 4-22
MIRL Rwy 9-27

SE-1, 16 APR 2026 to 14 MAY 2026

SE-1, 16 APR 2026 to 14 MAY 2026