

LOC/DME I-UKI	APP CRS	Rwy Ldg TDZE	4423
109.1	155°	617	
Chan 28		Apt Elev	617

LOC RWY 15

UKIAH MUNI (UKI)

DME required.

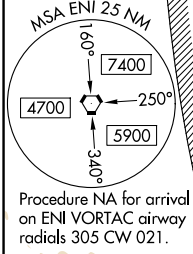
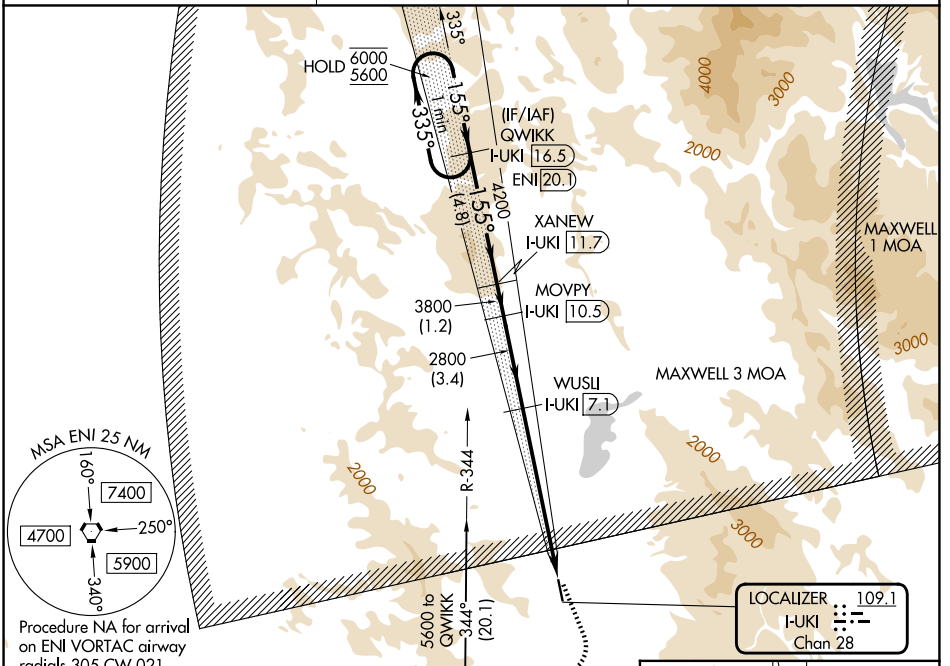
▼ Circling NA southwest of Rwy 15-33. Circling Rwy 33 NA at night. Rwy 15 helicopter visibility reduction below 3/4 SM NA. When local altimeter setting not received, procedure NA.

MISSED APPROACH: Climbing left turn to 4100 on heading 145° then climbing right turn to 5600 direct ENI VORTAC and on ENI VORTAC R-344 to QWIKK /I-UKI 16.5 DME and hold.

ASOS
119.275

OAKLAND CENTER
127.8 353.5

UNICOM
123.0 (CTAF) 1

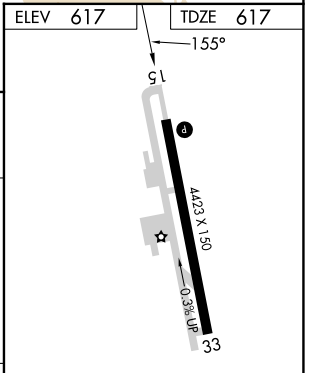
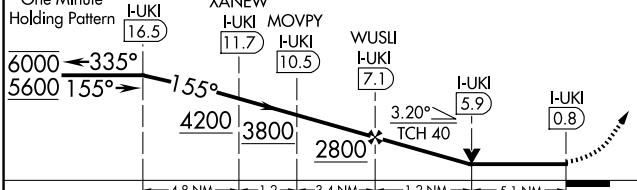


MENDOCINO
112.3 ENI
Chan 70

LOCALIZER
109.1
I-UKI
Chan 28

VGSI and descent angles not coincident (VGSI Angle 3.00/TCH 29).

4100	5600	ENI	ENI R-344	QWIKK I-UKI 16.5
hdg 145°				



CATEGORY	A	B	C	D
S-LOC 15	2300-1¼ 1683 (1700-1¼)	2300-1½ 1683 (1700-1½)	2300-3 1683 (1700-3)	
CIRCLING	2300-1¼ 1683 (1700-1¼)	2300-1½ 1683 (1700-1½)	2300-3 1683 (1700-3)	2780-3 2163 (2200-3)

MIRL Rwy 15-33 1
REIL Rws 15 and 33 1

FAF to MAP 6.3 NM

Knots	60	90	120	150	180
Min:Sec	6:18	4:12	3:09	2:31	2:06

SW-2, 16 APR 2026 to 14 MAY 2026

SW-2, 16 APR 2026 to 14 MAY 2026